

# Manual Funkwerk Dime Manager

Copyright© Version 1.0, 2009 Funkwerk Enterprise Communications GmbH

## Legal Notice

### Aim and purpose

This document describes a software application for the management of funkwerk devices. For the latest information and notes on the current software release, please also read our release notes, particularly if you are updating your software to a higher release version. You will find the latest release notes under [www.funkwerk-ec.com](http://www.funkwerk-ec.com) .

### Liability

This manual has been put together with the greatest possible care. However, the information contained in this manual is not a guarantee of the properties of your product. Funkwerk Enterprise Communications GmbH is only liable within the terms of its conditions of sale and supply and accepts no liability for technical inaccuracies and/or omissions.

The information in this manual can be changed without notice. You will find additional information and also release notes for funkwerk devices under [www.funkwerk-ec.com](http://www.funkwerk-ec.com) .

Funkwerk devices make WAN connections as a possible function of the system configuration. You must monitor the product in order to avoid unwanted charges. Funkwerk Enterprise Communications GmbH accepts no responsibility for data loss, unwanted connection costs and damage caused by unintended operation of the product.

### Trademarks

funkwerk trademarks and the funkwerk logo, bintec trademarks and the bintec logo, artem trademarks and the artem logo, elmeg trademarks and the elmeg logo are registered trademarks of Funkwerk Enterprise Communications GmbH.

Company and product names mentioned are usually trademarks of the companies or manufacturers concerned.

### Copyright

All rights reserved. No part of this manual may be reproduced or further processed in any way without the written consent of Funkwerk Enterprise Communications GmbH. The documentation may not be processed and, in particular, translated without the consent of Funkwerk Enterprise Communications GmbH.

You will find information on guidelines and standards in the declarations of conformity under [www.funkwerk-ec.com](http://www.funkwerk-ec.com) .

### How to reach Funkwerk Enterprise Communications GmbH

Funkwerk Enterprise Communications GmbH, Südwestpark 94, D-90449 Nuremberg, Germany,  
Phone: +49 180 300 9191 0, Fax: +49 180 300 9193 0

Funkwerk Enterprise Communications France S.A.S., 6/8 Avenue de la Grande Lande, F-33174  
Gradignan, France, Phone: +33 5 57 35 63 00, Fax: +33 5 56 89 14 05

Internet: [www.funkwerk-ec.com](http://www.funkwerk-ec.com)

# Table of Contents

Chapter 1	Introduction . . . . .	1
1.1	Possible Applications . . . . .	1
1.2	Supported devices . . . . .	2
1.3	System requirements . . . . .	2
1.3.1	PC . . . . .	2
1.3.2	System software . . . . .	3
1.4	Installation . . . . .	3
Chapter 2	User interface . . . . .	8
2.1	Elements . . . . .	8
2.1.1	Menu bar . . . . .	9
2.1.2	Device Explorer . . . . .	9
2.1.3	Main window . . . . .	10
2.1.4	Device Properties . . . . .	16
2.1.5	Log and file window . . . . .	21
2.2	Operation . . . . .	22
2.2.1	Change window display . . . . .	22
2.2.2	Select devices . . . . .	23
Chapter 3	Tasks . . . . .	24
3.1	Discover . . . . .	24
3.1.1	Search for devices . . . . .	24
3.1.2	Add devices manually . . . . .	24
3.1.3	Display devices . . . . .	25
3.1.4	Search for devices in the background . . . . .	25
3.1.5	Save search results . . . . .	26
3.1.6	Load search results . . . . .	26

3.2	Maintenance . . . . .	27
3.2.1	Display configuration files . . . . .	28
3.2.2	Change the path to the configuration files . . . . .	30
3.2.3	Display firmware files . . . . .	31
3.2.4	Change path to the firmware files / Update firmware files. . . . .	32
3.3	Services . . . . .	32
3.3.1	Open TFTP log window . . . . .	33
3.3.2	Define TFTP settings . . . . .	33
3.3.3	Start or stop TFTP service . . . . .	34
3.3.4	Open BOOTP log window . . . . .	34
3.3.5	Define parameters for a device via BOOTP . . . . .	36
3.3.6	Start or stop BOOTP service . . . . .	36
3.3.7	Display BOOTP devices . . . . .	36
3.4	Settings . . . . .	36
3.4.1	Open log windows for devices . . . . .	37
3.4.2	Open log windows for Dime Manager . . . . .	37
3.4.3	Change language. . . . .	37
3.4.4	Select TELNET Client . . . . .	37
3.5	Display information . . . . .	38
3.5.1	Display copyright and version . . . . .	38
3.5.2	Call up help . . . . .	39
3.6	Perform tasks with the task bar or with the shortcut menu . . . . .	39
3.6.1	Change device parameters and password . . . . .	39
3.6.2	Configure device via HTTP. . . . .	41
3.6.3	Configure device securely via HTTPS . . . . .	42
3.6.4	Configure device via TELNET . . . . .	42
3.6.5	Update firmware from a file . . . . .	43
3.6.6	Update firmware from a web server . . . . .	44
3.6.7	Update firmware from Funkwerk server . . . . .	46
3.6.8	Load configuration into a device . . . . .	48
3.6.9	Download configuration . . . . .	48

3.6.10	Reboot device . . . . .	50
3.6.11	Reset default settings . . . . .	51
3.6.12	Define parameters for a device via BOOTP . . . . .	52
3.6.13	Delete device . . . . .	53
3.7	Perform tasks with drag and drop . . . . .	53
3.7.1	Save configuration with drag and drop . . . . .	53
3.7.2	Update firmware with drag and drop . . . . .	54
3.7.3	Load configuration with drag and drop in a single device . . . . .	55
3.7.4	Load configuration with drag and drop in multiple devices . . . . .	56
	Index . . . . .	57



## Chapter 1 Introduction

The **Dime Manager** management tool can locate your Funkwerk devices within the network quickly and easily. The .Net-based application, which is designed for up to 50 devices, offers easy to use functions and a comprehensive overview of devices, their parameters and files.

By using SNMP multicast all of the devices in your local network can be located irrespective of their current IP address. A new IP address and password and other parameters can also be assigned. A configuration can then be initiated over HTTP or TELNET. If using HTTP, the Dime Manager automatically logs into the devices on your behalf.

System software files and configuration files can be managed individually as required or in logical groups for devices of the same type.

### 1.1 Possible Applications

With the **Dime Manager** you can even search for your Funkwerk devices in a private network. The devices are located using SNMP multicast. If multicast is enabled outside of the network boundaries it is also possible to locate devices in adjacent networks. The located devices are displayed in a list. A comprehensive parameter set is shown for each device.

The software recognises Funkwerk devices irrespective of whether or not a device

- has been switched on for the first time
- is already configured or
- displays an incorrect configuration.

As soon as the devices are displayed, you can manipulate the devices individually or in groups. In particular you can

- carry out a quick basic configuration
- call up the **Funkwerk Configuration Interface** directly from **Dime Manager** and configure your device as normal
- save and load configurations
- carry out a system software update
- boot devices directly from **Dime Manager** or reset devices to the factory default settings.

Comprehensive log files make your work easier. Logs are generated for the following actions:

- When using the **Dime Manager** itself

- When manipulating the device currently displayed
- When using TFTP and BOOTP.

Tasks that are required frequently, e.g. updating the system software, can be performed by drag and drop. This is particularly useful if you have several devices, for example, as the devices can be updated with a single click.

## 1.2 Supported devices

The **Dime Manager** program currently supports the following devices:

- **R1200, R1200w, R1200wu**
- **R3000, R3000w, R3400, R3800**
- **R4100, R4300**
- **TR200aw, TR200bw**
- **R230a, R230aw, R232b, R232aw, R232bw**
- **W1002, W1002n, W2002**
- **WI1040, WI2040, WI3040**
- **WI1065, WI2065, WI3065.**

## 1.3 System requirements

### 1.3.1 PC

For installation, your PC must meet the following system requirements:

- Operating system Microsoft Windows Vista (32-bit version or 64-bit version) or
- Microsoft Windows XP Service Pack 2 and above (32-bit version) with working Internet access.
- Internet Explorer Version 7 and above or
- Mozilla Firefox Version 3.0 and above
- Installed network card (Ethernet)
- Installed TCP/IP log
- High colour resolution (more than 256 colours) recommended for correct representation of the graphics.



**Note**

You also require Microsoft .Net Framework.

If you are using Microsoft Windows Vista, .NET Framework is included in the program setup.

If you are using Microsoft Windows XP, the program will check before installing **Dime Manager** that .NET Framework is already installed on your PC. If a suitable version of .NET Framework is available, the installation of the **Dime Manager** program will start immediately. If there is no suitable version of .NET Framework available, the latest version will be download from the Internet.

**Note**

If you are using Microsoft Windows Vista, TELNET is disabled by default. If you wish to use a TELNET client, you must enable it first.

## 1.3.2 System software

The **Dime Manager** locates all Funkwerk devices that are equipped with system software 7.8.7 or a new system software.

## 1.4 Installation

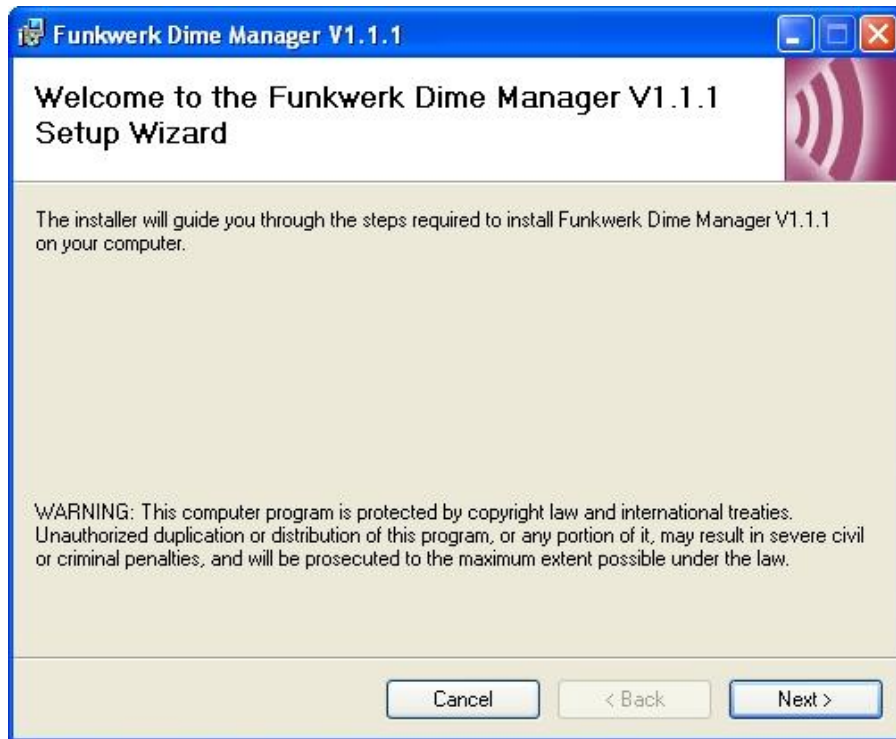
To install the **Dime Manager** program, proceed as follows:

- (1) Type [www.funkwerk-ec.com](http://www.funkwerk-ec.com) in your browser.  
The Funkwerk web page will open. You will find the required setup file in the download area for your device. The file is available in two language versions: German and English.
- (2) Select the file in your required language and save it to your computer.
- (3) Double-click the *setup.exe* file.  
The **Funkwerk Dime Manager V1.1.1** window opens.
- (4) If a suitable version of .NET Framework cannot be found on your PC, the program will be downloaded from the Internet. To do this you must accept the license agreement for .NET Framework.  
.NET Framework is then downloaded to your PC.

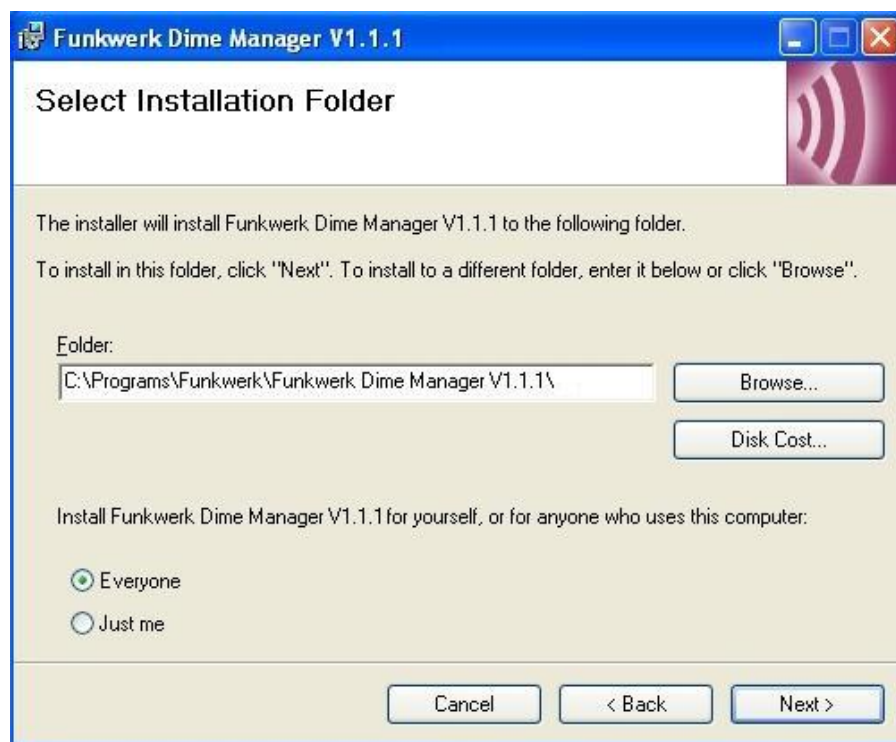
**Note**

Due to the large file size, downloading Microsoft .NET Framework from the Internet may take a long time depending on the bandwidth available.

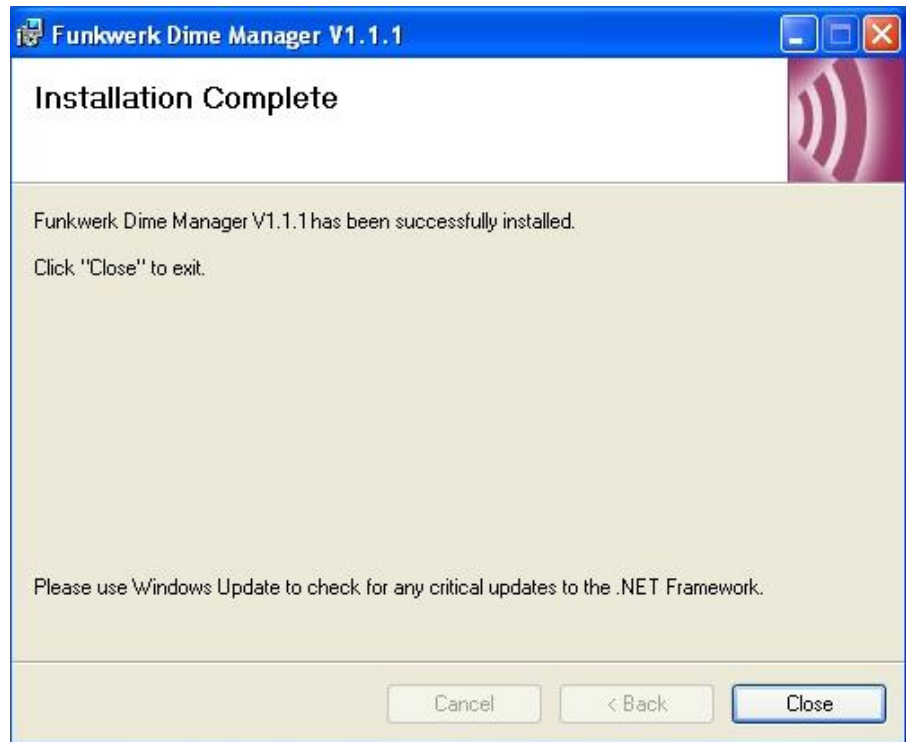
- (5) The **Funkwerk Dime Manager V1.1.1** window opens again. Follow the instructions on the screen.



- (6) We recommend making the program accessible to all users of the PC. To do this, under *Install Funkwerk Dime Manager V1.1.1 only for the current user or for all users of this computer* leave the default setting *All users*.



- (7) Click **Next**.
- (8) Follow the instructions on the screen.
- (9) Exit the installation by clicking **Close**.



The **Funkwerk Dime Manager V1.1.1** window is closed.

- (10) If the **Windows Security Alert** window opens this means that the Windows firewall has blocked some of the functions of the **Dime Manager** program for security reasons. You will be asked Do you want to keep blocking this program?. Click the **Unblock** button to stop blocking the functions.



You will now have access to the **Dime Manager** program. Click **Start -> Programs -> Funkwerk-> Dime Manager -> Dime Manager** to launch the program for the first time.

The program opens in the language you selected for the installation.

## Chapter 2 User interface

The **Dime Manager** program has a graphical user interface (GUI) to operate using the mouse.

When you launch the program for the first time you will see the default view.

The program automatically searches for and displays any Funkwerk devices.

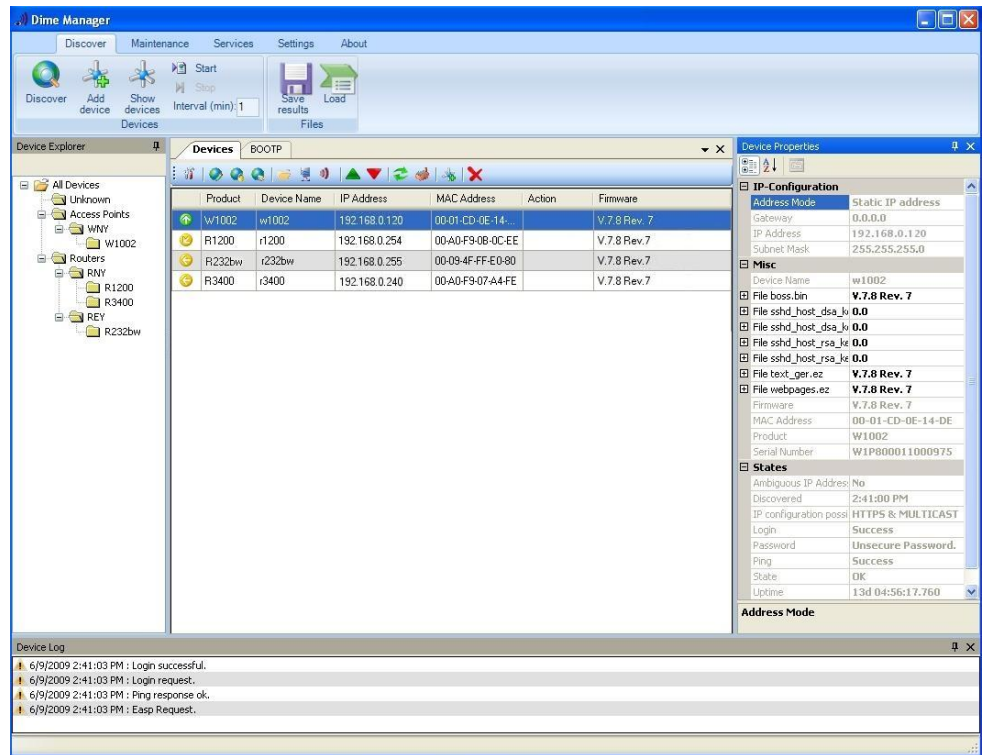


Fig. 2: Dime Manager

### 2.1 Elements

The **Dime Manager** program is broken down into five areas in the default view.

- The menu bars
- The device explorer
- The main window with the **Devices** tab, the task bar and the display field

- The device properties
- The log and file window.

The menu bar and the main window are docked and cannot be moved. The **Device Explorer**, **Device Properties** and log and file window can be undocked and moved anywhere on the screen. You can re-dock a freely positioned window.

When you end the program, the last used window layout is saved and reloaded and display the next time you start the program.

## 2.1.1 Menu bar

The menu bar shows the menu options available in **Dime Managers**. If you click a menu item, you will be shown icons relating to the corresponding sub-menus. Click the same menu item again to hide the icons.

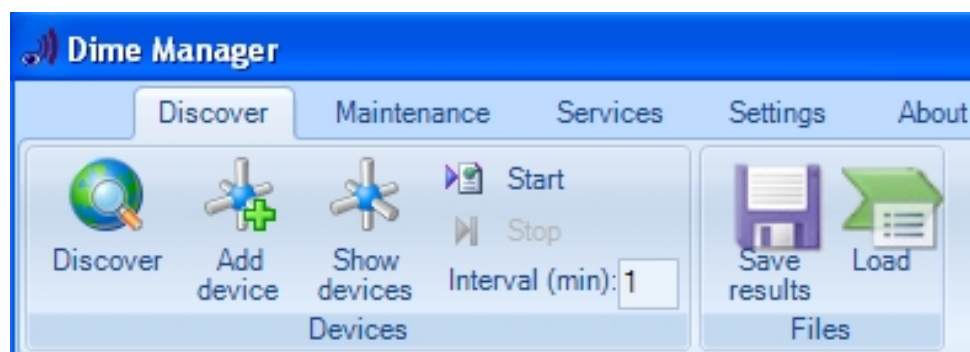


Fig. 3: Menu bar

## 2.1.2 Device Explorer

The **Device Explorer** window shows all located devices in a tree structure. Devices of the same type are grouped together into the same folder.

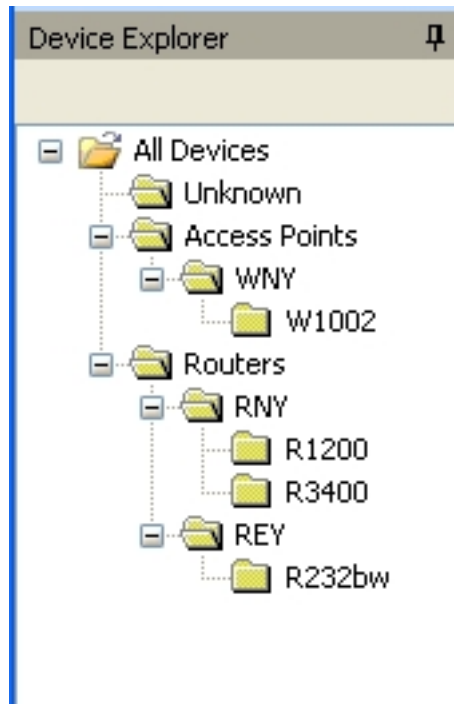


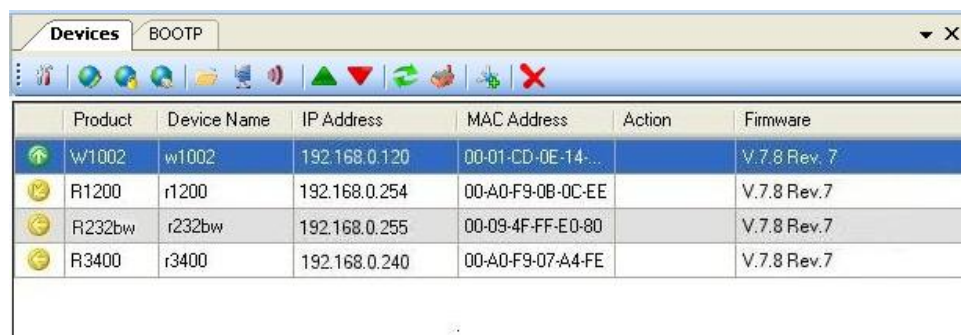
Fig. 4: Device Explorer

You can choose any folder. The devices in this folder are displayed in the main window, i.e. by making a selection in the **Device Explorer** window you can filter the display in the main window on the **Devices** record card.

### 2.1.3 Main window

The main window consists of individual tabs. Each record card consists of a tab with the title of the record card, a task bar and a display field.





	Product	Device Name	IP Address	MAC Address	Action	Firmware
↑	W1002	w1002	192.168.0.120	00-01-CD-0E-14...		V.7.8 Rev.7
⚠	R1200	r1200	192.168.0.254	00-A0-F9-0B-0C-EE		V.7.8 Rev.7
⚠	R232bw	r232bw	192.168.0.255	00-09-4F-FF-E0-80		V.7.8 Rev.7
⚠	R3400	r3400	192.168.0.240	00-A0-F9-07-A4-FE		V.7.8 Rev.7

Fig. 5: Main window

### 2.1.3.1 Task bar / Shortcut menu

The task bar for each record card contains icons for frequently used tasks. Tooltips help you when attributing tasks and icons. You can also perform these tasks via the shortcut menu.

#### Task bar / Content menu on the Devices record card

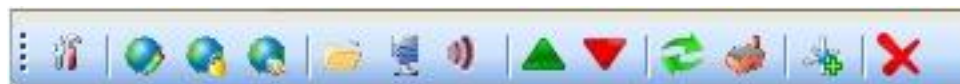


Fig. 6: Task bar

In the default view the **Devices** record card offers the following tasks in the task bar and in the shortcut menu:

- IP settings
- HTTP Configuration (FCI)
- HTTPS Configuration (FCI) secure
- TELNET Configuration (Setup)
- Update firmware from file
- Update firmware from web server
- Update firmware from Funkwerk server
- Upload configuration
- Download configuration
- Reboot device
- Reset device to factory settings

- Configure BOOTP
- Delete

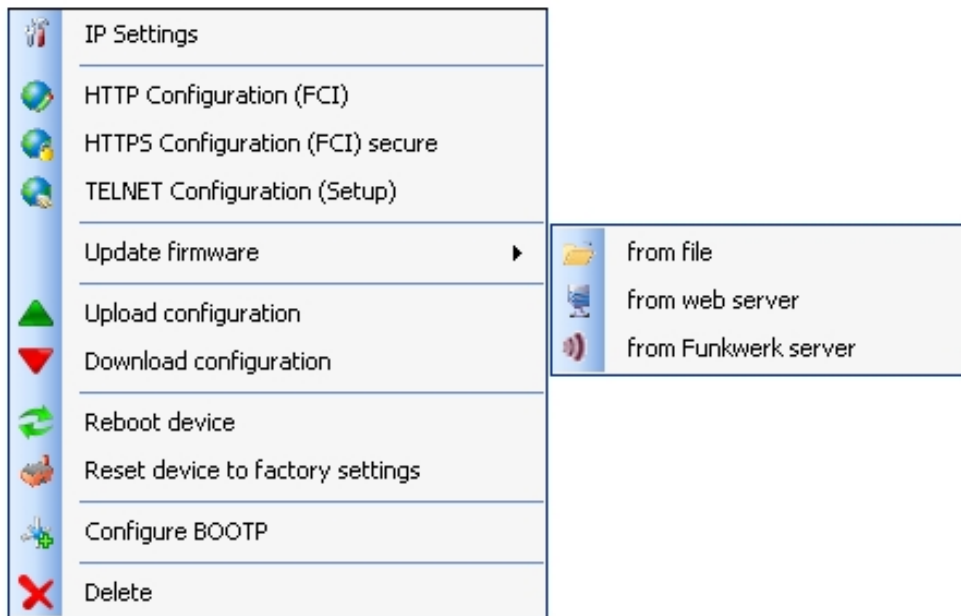


Fig. 7: Shortcut menu

Information on how to perform tasks using the task bar or the shortcut menu can be found under [Perform tasks with the task bar or with the shortcut menu](#) on page 39.

### 2.1.3.2 Display field

The display field is organised in rows and columns.

You can sort the values displayed in each column in ascending or descending order. Click the column header to change the sort order.

	Product	Device Name	IP Address	MAC Address	Action	Firmware
↑	w1002	w1002	192.168.0.120	00-01-CD-0E-14-...		V.7.8 Rev.7
↻	R1200	r1200	192.168.0.254	00-A0-F9-0B-0C-EE		V.7.8 Rev.7
↻	R232bw	r232bw	192.168.0.255	00-09-4F-FF-E0-80		V.7.8 Rev.7
↻	R3400	r3400	192.168.0.240	00-A0-F9-07-A4-FE		V.7.8 Rev.7

Fig. 8: Display field

### Devices record card

In the default view the display field on the **Devices** record card shows the devices that the **Dime Manager** has located. By selecting a specific folder in the **Device Explorer** window, you can filter the devices shown, i.e. only display some of the located devices.

A row is displayed for each device, which contains a parameter set with selected parameters for this device. If you move the mouse pointer over a row, you can see the device messages for this device in a tooltip. Alternatively, you can view these messages in the **Device Log** log window.



#### Note

If not all devices are shown in the main window, it is likely that you have accidentally made a selection in the **Device Explorer** window.

Each row on the **Devices** record card contains the following information:

- Status
- Product
- Device Name
- IP Address
- MAC Address
- Action (i.e. the last action carried out on the device)
- Firmware

In the corresponding column you can use the action displayed to check whether or not a transaction is running in the background and if so its current status. The colour of the action displayed indicates the progress of the action. If the action is ongoing, the text appears in black or white depending on the background colour. If the action has been successfully completed, the text appears in green. If the action has failed, the text appears in red.

The background colour also serves as a progress bar for the transaction.

You can also check all of the actions in the **Dime Manager Log** window.

The following actions can be displayed:

- Set IP via HTTPS
- Set IP via Multicast
- Reboot device
- Set ex works settings

- Update configuration
- Load configuration
- Update firmware from file
- Internet update firmware (Url)
- Internet update firmware (Vendor)

### BOOTP record card

If you have assigned devices using the BOOTP parameter, these devices are displayed on the **BOOTP** record card.

Each row on the **BOOTP** record card contains the following information:




- Status
- Device Name
- IP Address
- MAC Address
- Ignore (i.e. ignore BOOTP queries from this device)
- BOOTP Config File (i.e. Transfer target BOOTP configuration file to the device? The values *Yes* or *No* can be displayed.)

### Device status

The status of the device is indicated by an icon in the left column of the record card.








The colours of the icons have the following meaning:

#### Available status icon colours

Colour	Meaning
	Indicates the status "HTTPS login successful".
	Indicates the status "configured" or "administrable".
	Indicates the status "Only located" or "Not reachable".

The following icons can be displayed:

#### Available status icons

Icon	Meaning
	<p>Indicates the status "administered".</p> <p>The login via HTTPS was successful. The device has a new firmware with SNMP Discovery and the option to set IP settings via HTTPS.</p> <p>Note that the device cannot necessarily be reached via Multicast.</p>
	<p>Indicates the status "administrable, old firmware".</p> <p>The login via HTTPS was successful. The IP address cannot be set via SNMP Multicast or HTTPS because the device contains old firmware. A firmware update is available and a configuration can be loaded and saved.</p>
	<p>Indicates the status "Password set, no connection".</p> <p>A secure password is set.</p>
	<p>Indicates the status "administrable, incorrect IP address".</p> <p>The device has been located via SNMP Multicast, but the device cannot be reached via an IP connection. The status of the password is currently unknown. The IP settings can be modified with the correct password. The device has a new firmware with SNMP Discovery.</p>
	<p>Indicates the status "administrable, incorrect password".</p> <p>The device can be reached via its IP address. Unable to log in due to an incorrect password.</p>
	<p>Indicates the status "located".</p> <p>The device was located with ARTEM Discovery, but it has an old firmware and cannot be reached via an IP address.</p>
	<p>Indicates the status "not connected".</p>

## 2.1.4 Device Properties



Detailed information about the device currently selected on the **Devices** record card is displayed in the **Device Properties** window.

Device Properties	
<div style="display: flex; justify-content: space-between; align-items: center;"> <span>⊞</span> <span>⌵</span> <span>⌵</span> </div>	
<b>IP-Configuration</b>	
Address Mode	Static IP address
Gateway	0.0.0.0
IP Address	192.168.0.120
Subnet Mask	255.255.255.0
<b>Misc</b>	
Device Name	w1002
File boss.bin	V.7.8 Rev. 7
File sshd_host_dsa_key	0.0
File sshd_host_dsa_key	0.0
File sshd_host_rsa_key	0.0
File sshd_host_rsa_key	0.0
File text_ger.ez	V.7.8 Rev. 7
File webpages.ez	V.7.8 Rev. 7
Firmware	V.7.8 Rev. 7
MAC Address	00-01-CD-0E-14-DE
Product	W1002
Serial Number	W1P800011000975
<b>States</b>	
Ambiguous IP Address	No
Discovered	8:20:33 AM
IP configuration possible	HTTPS & MULTICAST
Login	Success
Password	Unsecure Password.
Ping	Success
State	OK
Uptime	13d 22:35:49.000

Fig. 9: Device Properties

In the default view the parameters for each device are broken down into three categories:

- **IP Configuration**
- **Misc**
- **States**

Alternatively, you can sort the displayed parameters alphabetically by clicking the  icon. Click the  icon to return to the category view.

#### Parameters available in the IP configuration field

Field	Description
Address Mode	Shows how the device is assigned an IP address.  Possible values: <ul style="list-style-type: none"> <li>• <i>Static IP Address</i>: The device has been assigned a static IP address.</li> <li>• <i>DHCP</i>: An IP address is assigned to the device dynamically via DHCP.</li> </ul>
Gateway	Shows the IP address of the gateway.
IP Address	Shows the IP address of the device.
Netmask	Displays the netmask of the device.

#### Parameters available in the Miscellaneous field

Field	Description
File xxx	Shows the system software files in the device flash depending on the device. For each file you can display the file name, version, date and time the file was created and the file size.
Device Name	Displays the device name.
MAC Address	Shows the MAC address of the device.
Product	Shows the product names, e.g. <b>W1200</b> .
Serial Number	Displays the serial number of the device.
Firmware	Displays the version of the system software.

#### Parameters available in the Statuses field

Field	Description
Discovered	Shows the time at which the device was last located.



Field	Description
IP Configuration possible	<p>Indicates if an IP configuration of the device can be carried out.</p> <p>Possible values:</p> <ul style="list-style-type: none"> <li>• <i>HTTPS &amp; Multicast</i>: A configuration is possible via HTTPS and Multicast.</li> <li>• <i>HTTPS</i>: A configuration is possible via HTTPS.</li> <li>• <i>Multicast</i>: A configuration is possible via Multicast.</li> <li>• <i>Not possible</i>: A configuration is not possible.</li> </ul>
<Last action on the device>	Shows the status of the action indicated on the <b>Devices</b> record card in the <b>Action</b> column by different colours.
Login	<p>Indicates whether or not login was successful.</p> <p>Possible values:</p> <ul style="list-style-type: none"> <li>• <i>Success</i>: Login was successful.</li> <li>• <i>Failed</i>: Login was not successful.</li> </ul>
Ambiguous IP address	<p>Indicates if the same IP address is being used by several devices.</p> <p>Possible values:</p> <ul style="list-style-type: none"> <li>• <i>No</i>: The IP address of the device is not being used by another located device.</li> <li>• <i>Yes</i>: The IP address of the device is being used by several devices.</li> </ul>
Password	<p>Shows the current status of the password.</p> <p>Possible values:</p> <ul style="list-style-type: none"> <li>• <i>Unsecure password</i>: The default password has not been changed.</li> <li>• <i>Secure password</i>: The default password has been changed.</li> <li>• <i>Undefined</i>: The default password for the device is not known. This password has not been changed.</li> </ul>
Ping	Indicates whether or not the device could be reached via ping.

Field	Description
	<p>Possible values:</p> <ul style="list-style-type: none"> <li>• <i>Success</i>: The device was reached via ping.</li> <li>• <i>Failed</i>: The device could not be reached via ping.</li> </ul>
Uptime	Displays the time past since the device was rebooted.
Status	<p>Shows the current status of the device.</p> <p>Possible values:</p> <ul style="list-style-type: none"> <li>• <i>OK</i>: The device is running and has been configured correctly.</li> <li>• <i>Ping was not successful.</i>: The device could not be reached via ping.</li> <li>• <i>Internal error: No info found for ID.</i>: An internal error occurred when checking an ID.</li> <li>• <i>Login was not successful.</i>: Login was not successful.</li> <li>• <i>Device is not responding.</i>: The device could not be reached. It is probably switched off.</li> <li>• <i>Unable to write the HTTPS request.</i>: The HTTPS request could not be sent to the device.</li> <li>• <i>Unable to read the HTTPS response.</i>: The HTTPS response from the device could not be read.</li> <li>• <i>Incorrect file format received.</i>: The file format of the data sent was incorrect.</li> <li>• <i>Unknown error</i>: The error that occurred could not be identified.</li> <li>• <i>Incorrect serial number</i>: A device with a different serial number was located under the IP address.</li> <li>• <i>Failed</i>: A request to the device failed.</li> <li>• <i>The server rejected the response to the HTTPS request. (HTTPS status 403)</i>: The server failed to respond to an HTTPS request from the device.</li> </ul>

## 2.1.5 Log and file window

A log window displays a list with messages. A file window displays the files in a directory. When opening the program for the first time the **Dime Manager Log** window is displayed. Several log windows and several file windows can be opened at the same time for various purposes. In the default view, you can toggle between these windows using tabs as the log and file windows are hidden automatically.

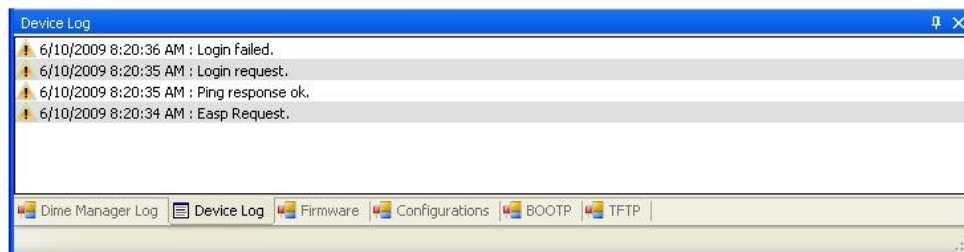


Fig. 10: Log window

The following log and file windows are available:

### Available windows

Window title	Function of the window
<b>Dime Manager Log</b>	Shows messages for the Dime Manager.
<b>Device log</b>	Shows the messages for the device currently selected in the <b>Devices</b> window.  You can also see the actions currently running (see also Action under <i>Display field</i> on page 12).  Alternatively you can see the messages for the device in the tooltip in the <b>Devices</b> window, if you move the mouse pointer over the corresponding row.
<b>Firmware</b>	Shows the files in the firmware directory.  You can change the path to the firmware directory in the <b>Firmware</b> field in the <b>Maintenance -&gt; Configure</b> menu.
<b>Configurations</b>	Shows the files in the configuration directory.  You can change the path to the configuration directory in the <b>Configurations</b> field in the <b>Maintenance -&gt; Configure</b> menu.

Window title	Function of the window
BOOTP	Shows messages if BOOTP is used.
TFTP	Shows messages if TFTP is used.




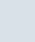

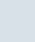

## 2.2 Operation


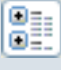
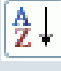
### 2.2.1 Change window display

In the **Dime Manager** program you can change the view and content of windows using various icons.

The following icons are available:

#### Available icons

Icon	Meaning
	Closes the window.
	Shows which record card is available in the main window. You can toggle between the record cards that are displayed.
	Indicates that the automatic hide function for the window is disabled. The window is displayed permanently.  If you click the icon, the display switches to the  icon and the window is hidden automatically as soon as it loses focus.
	Indicates that the automatic hide function for the window is enabled. A tab is displayed and the window is hidden if there is no focus.  If you drag the mouse pointer over the tab, the window is shown and you can click the icon to switch to the  icon and disable the automatic hide function.
	Displayed if a window is positioned freely, you click the window title and hold down the mouse button.  You can drag the mouse pointer over an icon to show the available docking position of the window.

Icon	Meaning
	When you release the mouse button, the window is docked in the position currently displayed.
	Shows the parameters in groups in the <b>Device Properties</b> window.
	Shows the parameters sorted alphabetically in the <b>Device Properties</b> window.

## 2.2.2 Select devices

You can select a row for a device and manipulate it in the main window. However, you can also select several devices (i.e. several rows) at the same time and, for example, update the system software for all selected devices by drag and drop with just a single click.

## Chapter 3 Tasks

### 3.1 Discover

In the **Discover** menu you can carry out all tasks related to searching for and locating a device.

You can:

- Search for devices
- Add devices manually
- Display devices
- Start a search in the background
- Save the displayed list of located devices
- Display a saved device list.

#### 3.1.1 Search for devices

- (1) Select **Discover**->**Discover** to search for devices within a network.  
The **Dime Manager** searches for devices using SNMP Multicast and displays the located devices.



#### Note

Devices in field offices are located if SNMP Multicast is routed, i.e. via a VPN tunnel.

#### 3.1.2 Add devices manually

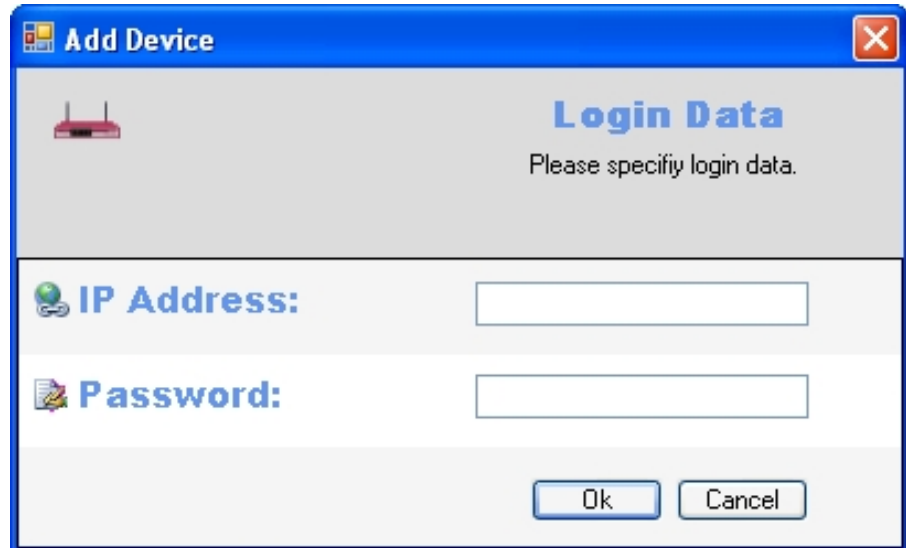
You can add any devices that are not located via SNMP Multicast manually.



#### Tip

If a device has a system software earlier than version 7.8.7, you can add the device manually and then carry out an update to the latest system software (see [Update firmware with drag and drop](#) on page 54, [Update firmware from a file](#) on page 43, [Update firmware from a web server](#) on page 44 or [Update firmware from Funkwerk server](#) on page 46).

- (1) Select **Discover**-> **Add device** to add device manually.  
The **Add device** window opens.



The screenshot shows a dialog box titled "Add Device" with a blue header bar. Inside the dialog, there is a router icon on the left and the text "Login Data" in blue on the right, followed by "Please specify login data." Below this, there are two input fields: "IP Address:" and "Password:". At the bottom right, there are "Ok" and "Cancel" buttons.

- (2) Enter the **IP Address** and the **Password** for the device and click **OK**.

The **Dime Manager** displays the new device.

### 3.1.3 Display devices

- (1) Select **Discover** -> **Show devices** to display the main window with the **Devices** record card and the **Device Properties** window. These windows are displayed automatically in the default view after the initial program start.

### 3.1.4 Search for devices in the background

- (1) If you wish to search for devices using an automatic search in the background, select **Discover** and define the period of time after which an automatic search should be repeated. To do this, enter the required value in minutes in the **Interval (min):** input field. The default value is one minute.
- (2) Start the search in the background by selecting **Discover** -> **Start**.  
The **Start** button is greyed out and the **Stop** button is highlighted. The **Dime Manager** repeats the search for devices within the network after the specified interval.  
The located devices are displayed after each search.
- (3) If you wish to stop the automatic search, click **Stop**.

### 3.1.5 Save search results


Here you can save a list of detected devices.

- (1) Select **Discover** -> **Save results** to save the search results currently displayed. By default the search results are saved under *My Documents\Funkwerk\Dime Manager* in the *devicelist.xml* with a password.

The **Save device list** window opens.

This window opens automatically if you end the **Dime Manager** program.

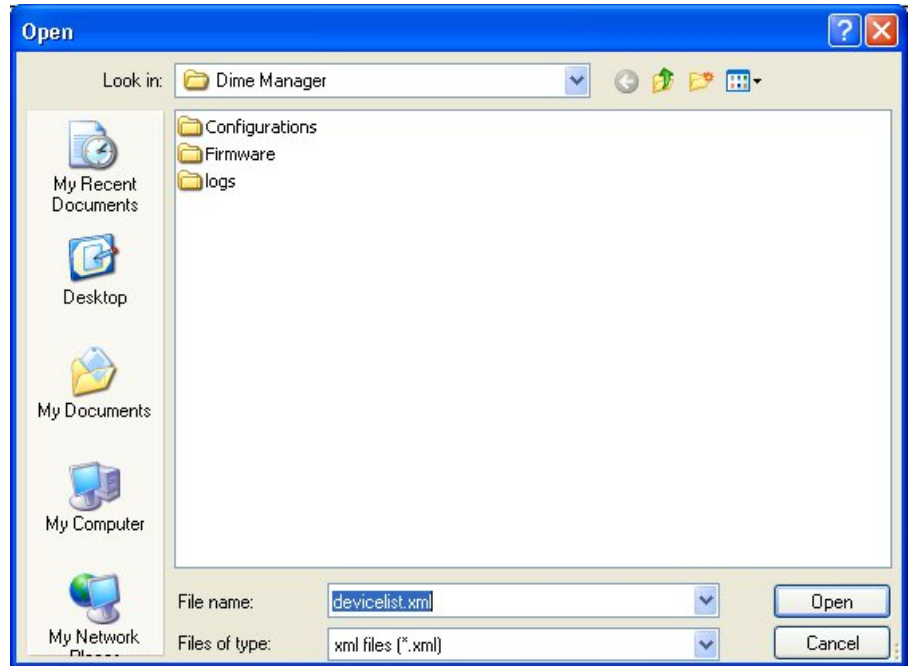


- (2) If you wish to protect the search results with a password, leave the default setting *With password* and enter the required password in the **Password** field and in the **Confirm password** field.
- (3) If you wish to save the search results without a password, disable *With password*.
- (4) If you wish to change the path and the file name displayed, click the  icon.  
The **Save as** window opens.  
Change the path and file name as required and click **Save**.
- (5) Click **Yes**.  
The device list is saved without status information. (status information is available in the corresponding log files.)



### 3.1.6 Load search results

- (1) Select **Discover**->**Load** to load previously saved search results.  
The **Open** window opens.  
The last saved file is displayed in the **File name** field by default.



- (2) Select the required file and click **Open**.
- (3) If you wish to load a file that is protected with a password, the **Load with password** window opens. Enter the password and click **OK**.  
The file is loaded and its contents is displayed in the **Dime Manager**.

## 3.2 Maintenance

In the **Maintenance** menu you can prepare maintenance for a device. You can carry out maintenance for any of the devices displayed in the main window on the **Devices** record card.

You perform the actual maintenance in the main window on the **Devices** record card using the task bar or the shortcut menu (see *Perform tasks with the task bar or with the shortcut menu* on page 39) or using drag and drop (see *Perform tasks with drag and drop* on page 53).

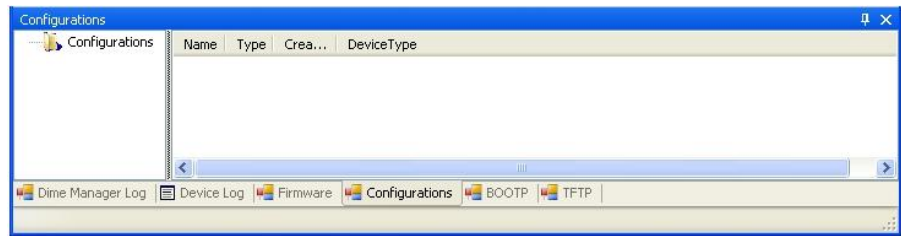
In the **Maintenance** menu you can

- Display the window for the configuration files
- Change the path to the configuration files
- Display the window for the firmware files
- Update firmware files
- Change the path to the firmware files.

### 3.2.1 Display configuration files

- (1) Select **Maintenance** -> **Window** in the **Configurations** field to open the **Configurations** menu.

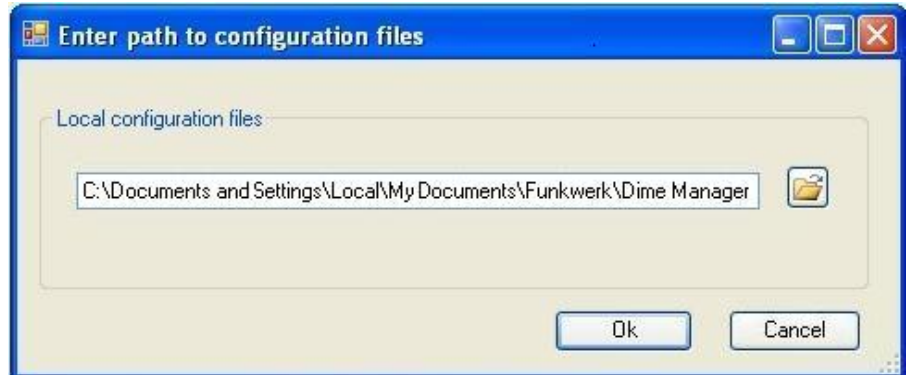
You can display the files that you can use for a configuration.




### 3.2.2 Change the path to the configuration files

- (1) If you wish to change the path to the configuration files that you can see in the **Configurations** menu (see *Display configuration files* on page 28), select **Maintenance > Configure** in the **Configurations** field.

The **Enter path to configuration files** window opens.



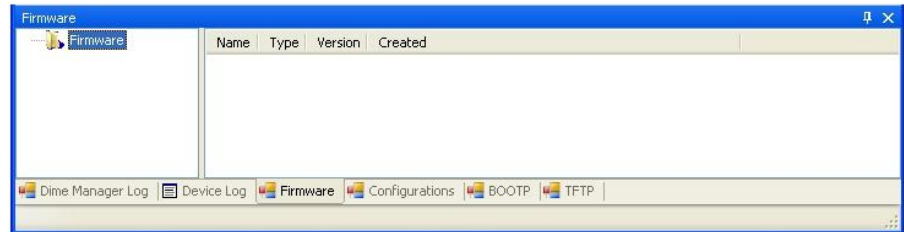
- (2) Specify in which folder the configuration files should be saved. By default they are saved to *My Documents\Funkwerk\Dime Manager\Configurations*.
- (3) If you wish to change the path, click the  icon.  
The **Search for folders** window opens.



- (4) If the required folder already exists, select the folder and click **OK**.
- (5) If you wish to create a new folder, select the path under which the new folder is to be created, click **Create new folder**, enter a name for the folder and click **OK**.
- (6) Click **OK**.  
The new path to the configuration files is specified.

### 3.2.3 Display firmware files

- (1) Select **Maintenance** -> **Window** in the **Firmware** field to open the **Firmware** menu.  
You can display the files that you can use for a firmware update sorted according to device.



### 3.2.4 Change path to the firmware files / Update firmware files

- (1) If you wish to change the path to the firmware files that you can see in the **Firmware** menu (see *Display firmware files* on page 31) or wish to update the firmware files, select **Maintenance** -> **Configure** in the **Firmware** field.

The **Firmware Information** window opens.

By default the firmware files are saved to *My Documents\Funkwerk\Dime Manager\Firmware*. You can change this path **Local Firmware Folder** as required.



- (2) If you wish to copy the latest firmware files to your local directory, click **Update**.  
The firmware files are downloaded from the Internet and copied to your directory.
- (3) If you wish to search for firmware updates and release notes on the Funkwerk home page, click the **funkwerk** logo and search for the required files.
- (4) If you wish to host a proprietary firmware web server, enter the file name and the path in the **Server Address** field.
- (5) Click **OK**.

## 3.3 Services

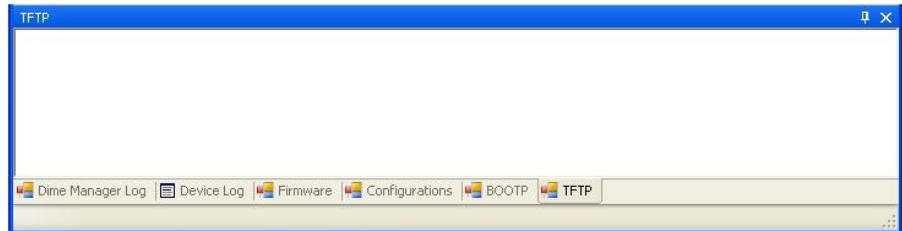
The TFTP and BOOTP services are available from the **Services** menu. TFTP is used to transfer system software or configuration files. With BOOTP a device can be assigned an IP address and other parameters when switched on.

In the **Services** menu you can

- Define the settings for the TFTP service
- Start and stop the TFTP service
- Define settings for a device via BOOTP
- Start and stop the BOOTP service
- Display the **BOOTP** record card
- Display the log window for the respective service

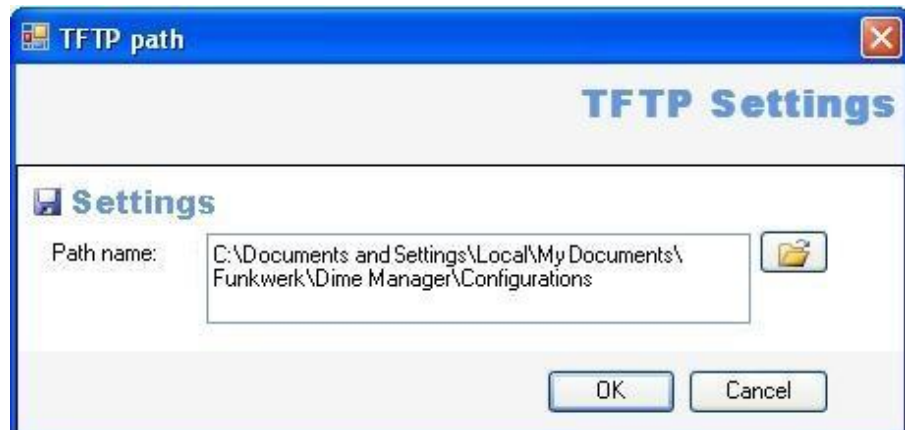
### 3.3.1 Open TFTP log window

- (1) Select **Services** -> **Window** in the **TFTP** field to open the **TFTP** log window.  
If you use TFTP, any TFTP messages are displayed in this window.



### 3.3.2 Define TFTP settings

- (1) Select **Services** -> **Configure** in the **TFTP** field to define the path with which TFTP files can be saved or opened. By default TFTP uses the path *My Documents\Funkwerk\Dime Manager\Configurations*. You can change this path.



- (2) Once you have changed the path as required click **OK**.

### 3.3.3 Start or stop TFTP service

- (1) Select **Services** -> **Start** in the **TFTP** field to start the TFTP service.  
As soon as the TFTP service is running in the background, the **Start** button is greyed out and the **Stop** button is highlighted.
- (2) If TFTP is already running in the background, select **Services** -> **Stop** in the **TFTP** field to stop the TFTP service.  
As soon as the TFTP service has stopped, the **Start** button is highlighted and the **Stop** button is greyed out.

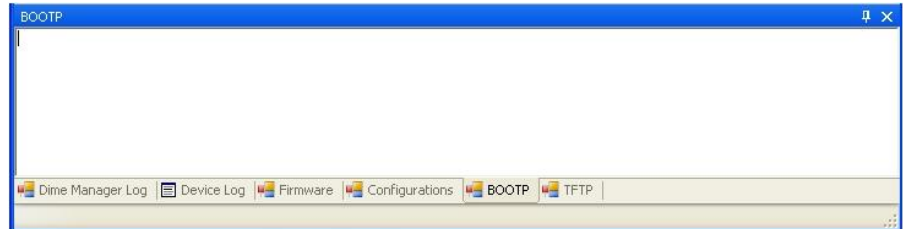


#### Note

Note that TFTP can run independently of the display in the **TFTP** log window (see [Open TFTP log window](#) on page 33).

### 3.3.4 Open BOOTP log window

- (1) Select **Services** -> **Window** in the **BOOTP** field to open the **BOOTP** log window.  
If you use BOOTP, any BOOTP messages are displayed in this window.





### 3.3.5 Define parameters for a device via BOOTP

- (1) Select **Services** -> **Add** in the **BOOTP** field.

The **BOOTP** window opens. The BOOTP parameters for the required device can be entered.

The BOOTP configuration menu for a device from the device list can be opened by clicking **Configure BOOTP** in the task bar or in the shortcut menu.

**BOOTP**

## BOOTP Settings

### Device Parameters


Device Name:  IP Address:   
 MAC Address:  Netmask:

### Local Network Parameters

Domain Name:   
 Domain Name Server 1:   
 Domain Name Server 2:   
 Time Server:   
 Time Offset:  (Hours)  
 SysLog Host:

### Config File

Specifies a configuration file from the TFTP Directory to be sent to the device. TFTP must be active to use this service. Above specified values could be overwritten by the config file.

Filename:  

### Ignore

Ignore BOOTP requests from this device:

OK Cancel

- (2) Change or add parameters as required.
- (3) If you wish to transfer a configuration file to the device, select the required file.



#### Note

Note that the TFTP service must be running to transfer a configuration file (see [Start or stop TFTP service](#) on page 34).

- (4) Click **OK**.

As soon as the device sends a BOOTP request (e.g. when booting), the parameters are transferred to the device. The **BOOTP** record card is displayed in the main window with the device updated via BOOTP.

### 3.3.6 Start or stop BOOTP service

- (1) Select **Services** -> **Start** in the **BOOTP** field to start the BOOTP service.  
As soon as the BOOTP service is running, the **Start** button is greyed out and the **Stop** button is highlighted.



#### Note

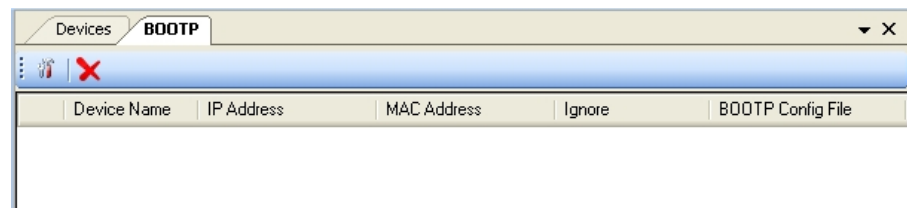
Note that BOOTP can run independently of the display in the **BOOTP** log window (see [Open BOOTP log window](#) on page 34).

As soon as a device sends a BOOTP request, the **BOOTP** window opens with the parameters for this device. You can change the parameters as required.

- (2) Click **OK** to transfer the parameters to the device.
- (3) Select **Services** -> **Stop** in the **BOOTP** field to stop the BOOTP service.  
As soon as the BOOTP service has stopped, the **Start** button is highlighted and the **Stop** button is greyed out.

### 3.3.7 Display BOOTP devices

- (1) Select **Services** -> **Show devices** in the **BOOTP** field to show the **BOOTP** record card in the foreground of the main window and to display the respective devices for which the BOOTP parameters are configured.



## 3.4 Settings

In the **Settings** menu you can define basic settings.

You can

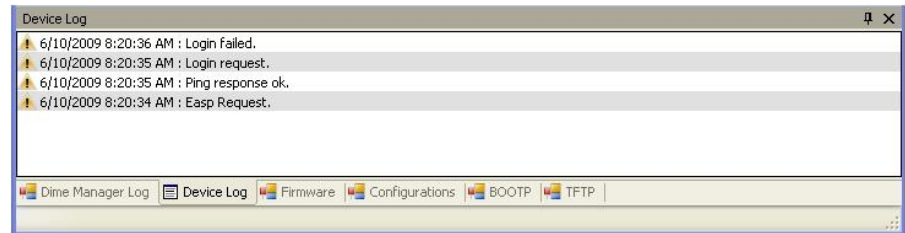
- Open the log window for the devices
- Open the log window for the **Dime Manager**

- Change the language for the user interface
- Change the TELNET client currently selected

### 3.4.1 Open log windows for devices

- (1) Select **Settings** -> **Device Log** to open the **Device Log** window for messages from all displayed devices.

The **Device Log** log window opens and any messages are displayed.



### 3.4.2 Open log windows for Dime Manager

- (1) Select **Settings** -> **Dime Log** to open the window for messages from the **Dime Manager**.

The **Dime Manager** log window opens and any messages are displayed.

### 3.4.3 Change language

- (1) Select **Settings** -> **Language** to change the language of the user interface.
- (2) The languages currently available are German and English.

Select the desired language.

The message `To change the language, logging must temporarily be disabled. BOOTP, TFTP and Dime Manager Log windows will also be cleaned. Would you like to continue anyway?` appears.

- (3) Click **Yes** to enable the selected language setting.

### 3.4.4 Select TELNET Client



#### Note

If you are using Microsoft Windows Vista, TELNET is disabled by default. If you wish to use a TELNET client, you must enable it first.

- (1) Select **Settings** -> **TELNET over:** in the **Configuration** field to select a different TELNET client.

- (2) Select the desired TELNET client.

The selected TELNET client is used for configurations with the setup tool (see [Configure device via TELNET](#) on page 42).

## 3.5 Display information

In the **About** menu you can

- Display information about the **Dime Manager**
- Access help files on the **Dime Manager**

### 3.5.1 Display copyright and version

- (1) Select **About** -> **About**.

The **About Dime Manager** window opens.

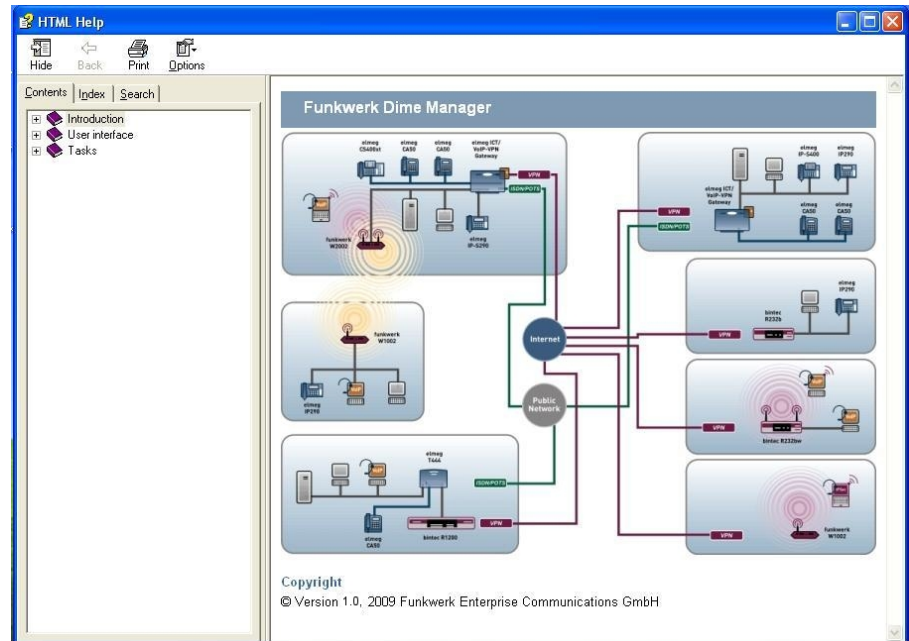
The copyright and version number are displayed.



- (2) Click **OK** to close the window.

## 3.5.2 Call up help

- (1) Select **About** -> **Help** to call up HTML help.



## 3.6 Perform tasks with the task bar or with the shortcut menu


In the default view the **Devices** record card has a task bar for important tasks. You can also perform these tasks via the shortcut menu.

You can select one or more devices and apply the following action to the selected device or selected devices.

The following descriptions refer to a single device. Proceed accordingly for multiple devices.

### 3.6.1 Change device parameters and password

You can change the name and password for a device as well as its IP settings.

- (1) Select the desired device in the main window on the **Devices** record card.
- (2) Click the  icon or open the shortcut menu by right-clicking and select **IP Settings** or double-click the device.

The **IP Settings** window opens.

**IP Settings**

Device Name: w1002

Current Password: ●●●●●●●●

New Password: ●●●●●●●●

Show passwords in clear text:

**IP configuration**

IP Address: 192.168.0.120

IP Address Mode: Static IP address

Subnet Mask: 255.255.255.0

Gateway: 0.0.0.0

Save configuration permanently

OK Verify Cancel



#### Note

Note that the **IP Settings** window only opens if the device has been located with SNMP Discovery or can be reached via HTTPS.


- (3) Change the settings as required.
- (4) If you wish to save the configuration on the device so that it will be available after a restart, enable the **Save configuration permanently** setting.
- (5) Click **Verify** to check whether or not the device can be reached at the specified IP ad-

dress.

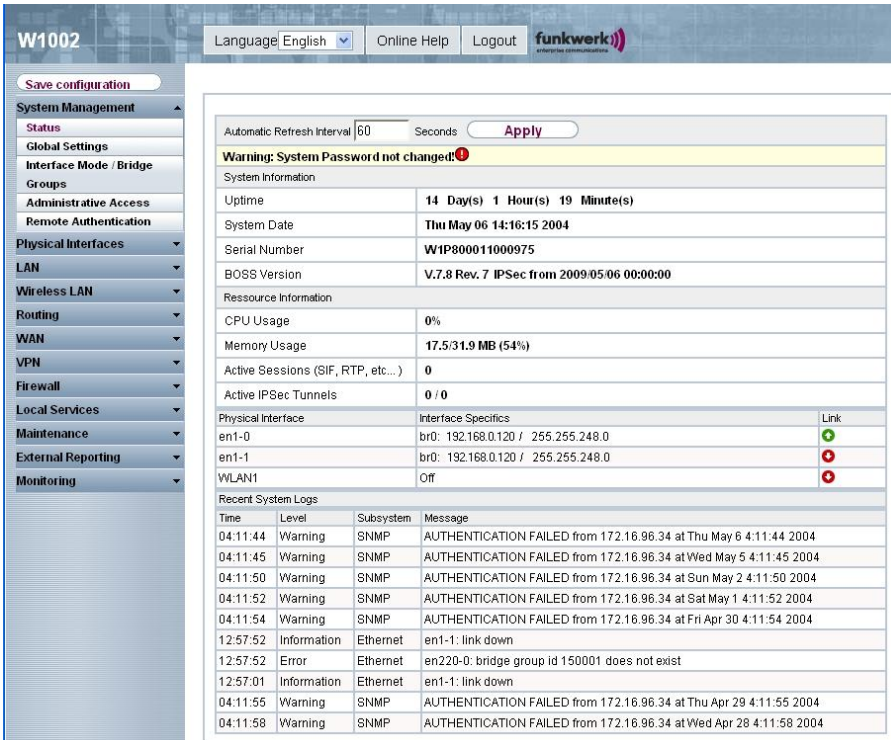
- (6) Click **OK** to transfer the settings to the selected device and close the window.

### 3.6.2 Configure device via HTTP

You can configure a device with HTTP using the **Funkwerk Configuration Interface** directly from **Dime Manager**. You do not need to log in, as the **Dime Manager** will have saved the device password and will take you directly to the selected device.




- (1) Select the desired device in the main window on the **Devices** record card.
- (2) Click the  icon or open the shortcut menu by right-clicking and select **HTTP Configuration (FCI)**.

The start menu for the **Funkwerk Configuration Interface** opens.



The screenshot displays the Funkwerk Configuration Interface (FCI) for device W1002. The interface includes a navigation menu on the left and a main content area. At the top, there is a language dropdown set to 'English', 'Online Help', and 'Logout' buttons. The main content area is divided into several sections:

- System Information:**
  - Uptime: 14 Day(s) 1 Hour(s) 19 Minute(s)
  - System Date: Thu May 06 14:16:15 2004
  - Serial Number: W1P800011000975
  - BOSS Version: V.7.8 Rev. 7 IPSec from 2009-05-06 00:00:00
- Resource Information:**
  - CPU Usage: 0%
  - Memory Usage: 17.5/31.9 MB (54%)
  - Active Sessions (SIF, RTP, etc...): 0
  - Active IPsec Tunnels: 0 / 0
- Physical Interface:**

Physical Interface	Interface Specifics	Link
en1-0	br0: 192.168.0.120 / 255.255.248.0	
en1-1	br0: 192.168.0.120 / 255.255.248.0	
WLAN1	Off	
- Recent System Logs:**


Time	Level	Subsystem	Message
04:11:44	Warning	SNMP	AUTHENTICATION FAILED from 172.16.96.34 at Thu May 6 4:11:44 2004
04:11:45	Warning	SNMP	AUTHENTICATION FAILED from 172.16.96.34 at Wed May 5 4:11:45 2004
04:11:50	Warning	SNMP	AUTHENTICATION FAILED from 172.16.96.34 at Sun May 2 4:11:50 2004
04:11:52	Warning	SNMP	AUTHENTICATION FAILED from 172.16.96.34 at Sat May 1 4:11:52 2004
04:11:54	Warning	SNMP	AUTHENTICATION FAILED from 172.16.96.34 at Fri Apr 30 4:11:54 2004
12:57:52	Information	Ethernet	en1-1: link down
12:57:52	Error	Ethernet	en220-0: bridge group id 150001 does not exist
12:57:01	Information	Ethernet	en1-1: link down
04:11:55	Warning	SNMP	AUTHENTICATION FAILED from 172.16.96.34 at Thu Apr 29 4:11:55 2004
04:11:58	Warning	SNMP	AUTHENTICATION FAILED from 172.16.96.34 at Wed Apr 28 4:11:58 2004

You can now configure the device.

- (3) If you wish to save the current configuration on the device, click **Save configuration** in the **Funkwerk Configuration Interface**. Refer to [Download configuration](#) on page 49 for information on how to save the configuration in the **Dime Manager**.

### 3.6.3 Configure device securely via HTTPS

You can configure a device securely with HTTPS using the **Funkwerk Configuration Interface** directly from **Dime Manager**. You do not need to log in, as the **Dime Manager** will have saved the device password and will take you directly to the selected device.

- (1) Select the desired device in the main window on the **Devices** record card.
- (2) Click the  icon or open the shortcut menu by right-clicking and select **HTTPS Configuration (FCI) secure**.
- (3) In some cases a warning message may appear and the **Secure connection failed** window may open if a security certificate is not signed.



If this happens add an exception and download a certificate. Follow the instructions on the screen.

- (4) If you click the **Confirm security exception rule** button in the **Add security exception rule**, the start menu opens the **Funkwerk Configuration Interface**. You can now configure the device.
- (5) If you wish to save the current configuration on the device, click **Save configuration** in the **Funkwerk Configuration Interface**. Refer to [Download configuration](#) on page 49 for information on how to save the configuration in the **Dime Manager**.

### 3.6.4 Configure device via TELNET




#### Note

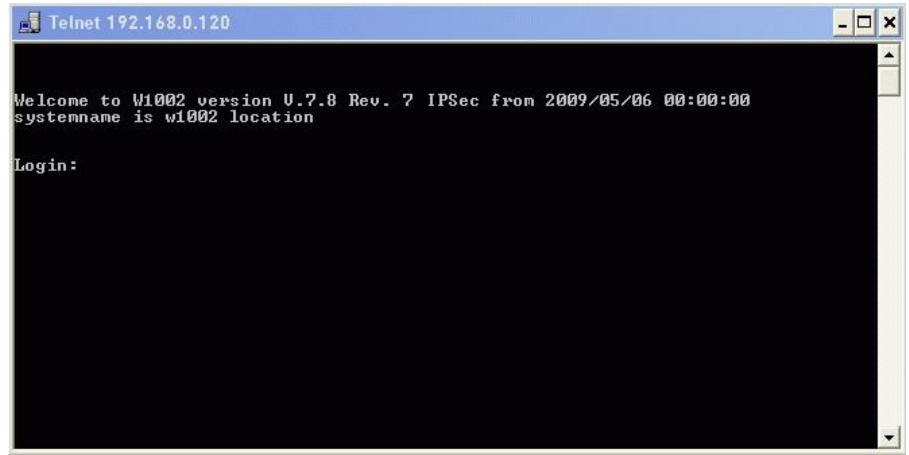
If you are using Microsoft Windows Vista, TELNET is disabled by default. If you wish to use a TELNET client, you must enable it first.



You can configure a device via the **Setup Tool** directly from **Dime Manager**.

- (1) Select the desired device in the main window on the **Devices** record card.
- (2) Click the  icon or open the shortcut menu by right-clicking and select **TELNET Configuration (Setup)**.


A TELNET client opens. You can log into the chosen device and configure it.



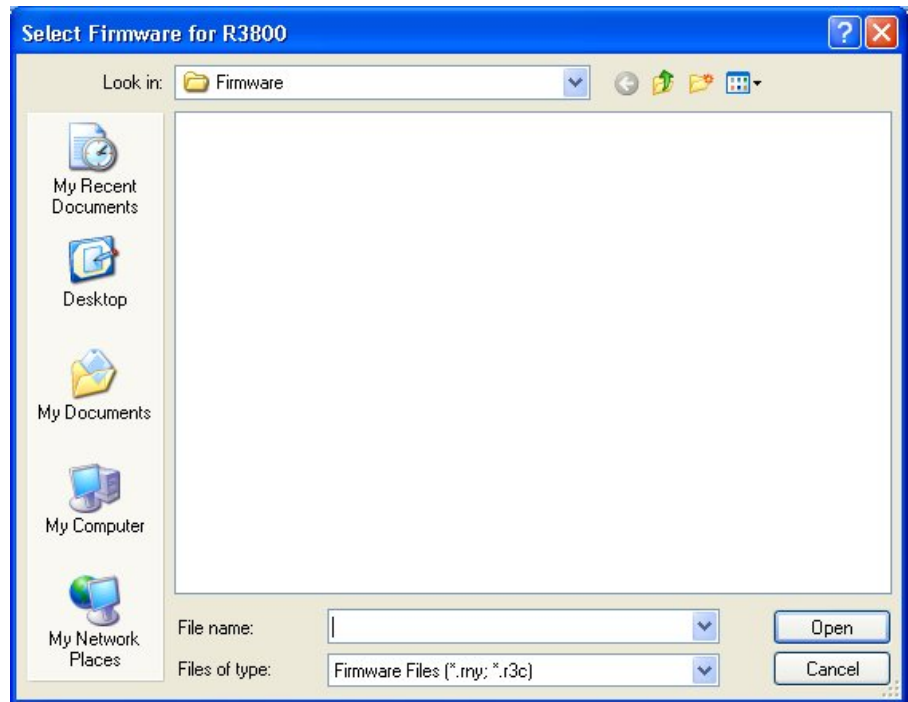
- (3) If you wish to save the current configuration on the device, select the **Save as boot configuration and exit** menu option in the **Setup Tool**. Refer to [Download configuration](#) on page 49 for information on how to save the configuration in the **Dime Manager**.

### 3.6.5 Update firmware from a file

You can update the firmware of a device using a firmware file, which is saved in your **Dime Manager**.

- (1) Select the desired device in the main window on the **Devices** record card.
- (2) Click the  icon or open the shortcut menu by right-clicking and select **Update firmware from file**.

The **Firmware for <device name>** window opens. By default the files are displayed from *My Documents\Funkwerk\Dime Manager\Firmware*. You can change this path (see [Change path to the firmware files / Update firmware files](#) on page 32).



- (3) Select the required file and click **Open**.

The firmware file is transferred to the device.

Whilst the action is running the *Update firmware from file* message is displayed in the **Devices** window in the **Action** column in black or white depending on the background colour. Once the action is successfully completed, the *Update firmware from file* message appears in green. If the action fails, the *Update firmware from file* message appears in red.

The background colour also serves as a progress bar for the transaction.




#### Note

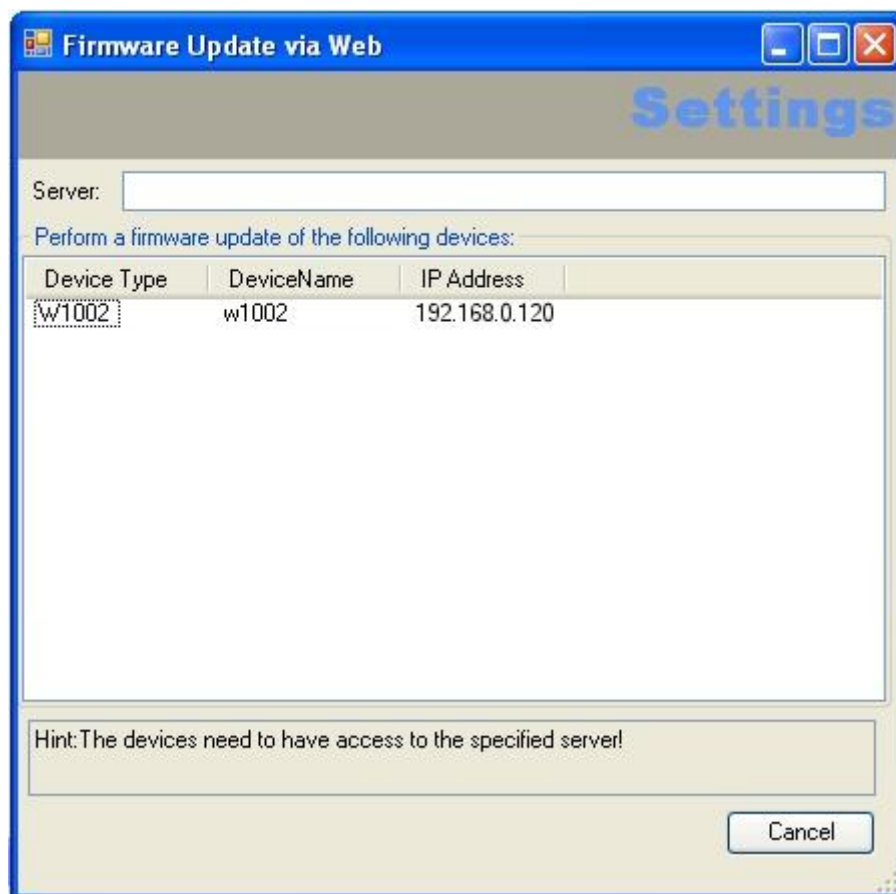
Reboot the device to activate the new firmware (see [Reboot device](#) on page 50).

### 3.6.6 Update firmware from a web server

You can update the firmware for a device using a web server.

- (1) Select the desired device in the main window on the **Devices** record card.
- (2) Click the  icon or open the shortcut menu by right-clicking and select **Update firmware from web server**.

The **Firmware Update via Web** window opens.



- (3) Enter the desired web server in the **Server** field.



#### Note

Note that DNS must be enabled on the chosen devices and there must be an Internet connection available from the chosen device to the entered web server.

- (4) Click **Start**.

The device loads the firmware file from the specified web server.

Whilst the action is running the *Internet update firmware (Url)* message is displayed in the **Devices** window in the **Action** column in black or white depending on the background colour. Once the action is successfully completed, the *Internet update firmware (Url)* message appears in green. If the action fails, the *Internet update firmware (Url)* message appears in red.


The background colour also serves as a progress bar for the transaction.

**Note**

Reboot the device to activate the new firmware (see [Reboot device](#) on page 50).

### 3.6.7 Update firmware from Funkwerk server

You can update the firmware for a device using the Funkwerk server.

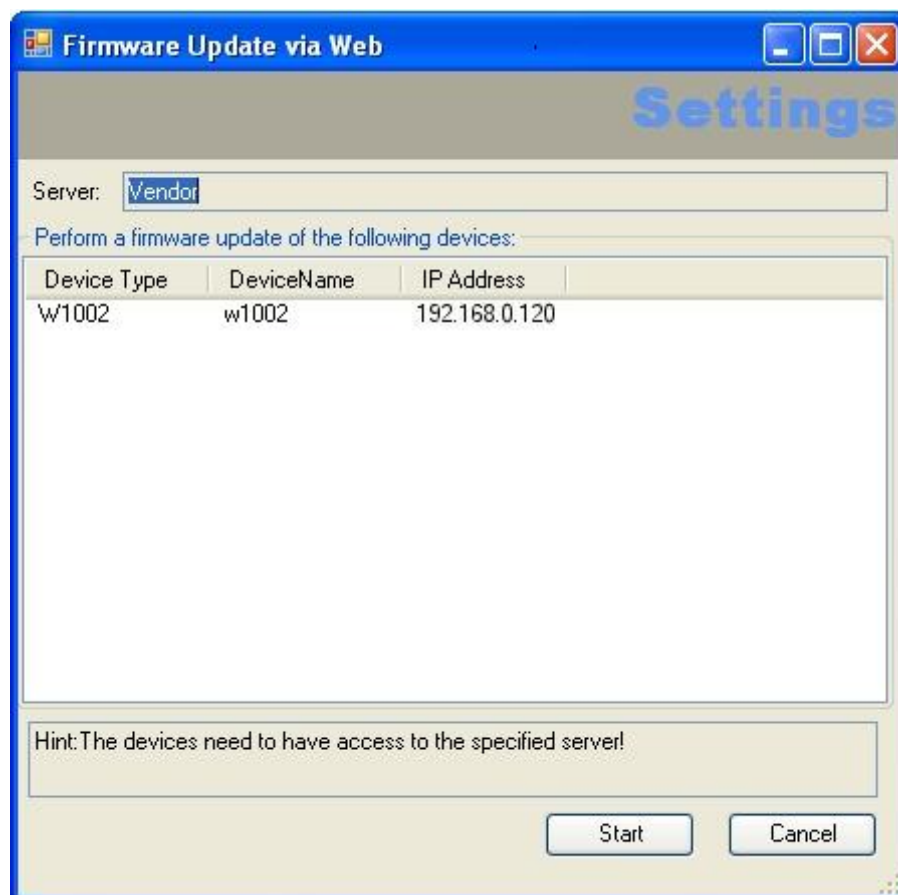
- (1) Select the desired device in the main window on the **Devices** record card.
- (2) Click the  icon or open the shortcut menu by right-clicking and select **Update firmware from Funkwerk server**.

The **Firmware Update via Web** window opens.

The Funkwerk server is preset, although you can change these default settings.

**Note**

Note that DNS must be enabled on the chosen devices and there must be an Internet connection available from the chosen device to the entered web server.



(3) Click **Start**.

The device loads the firmware file from the Funkwerk server.

Whilst the action is running the *Internet update firmware (Vendor)* message is displayed in the **Devices** window in the **Action** column in black or white depending on the background colour. Once the action is successfully completed, the *Internet update firmware (Vendor)* message appears in green. If the action fails, the *Internet update firmware (Vendor)* message appears in red. The background colour also serves as a progress bar for the transaction.



**Note**

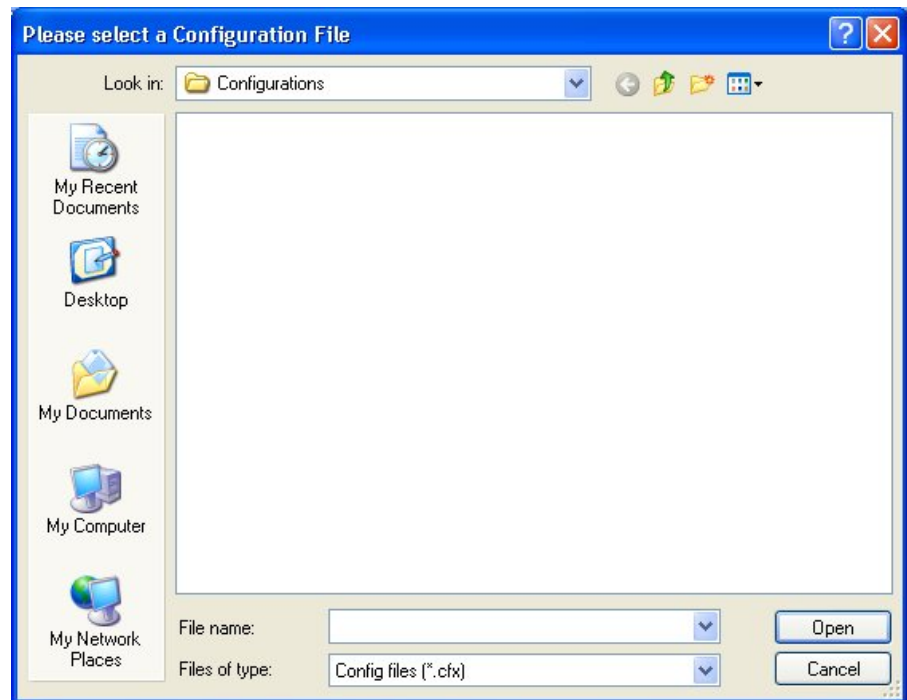
Reboot the device to activate the new firmware (see [Reboot device](#) on page 50).

### 3.6.8 Load configuration into a device

You can load a configuration into a device.

- (1) Select the desired device in the main window on the **Devices** record card.
- (2) Click the ▲ icon or open the shortcut menu by right-clicking and select **Upload configuration**.

The **Please select a configuration file** window opens. By default the configuration files are saved to *My Documents\Funkwerk\Dime Manager\Configurations*. You can change the path to the configuration files (see [Change the path to the configuration files](#) on page 30).



- (3) Select the required configuration file and click **Open**.

The configuration file is transferred to the device.

Whilst the action is running the *Update configuration* message is displayed in the **Devices** window in the **Action** column in black or white depending on the background colour. Once the action is successfully completed, the *Update configuration* message appears in green. If the action fails, the *Update configuration* message appears in red.

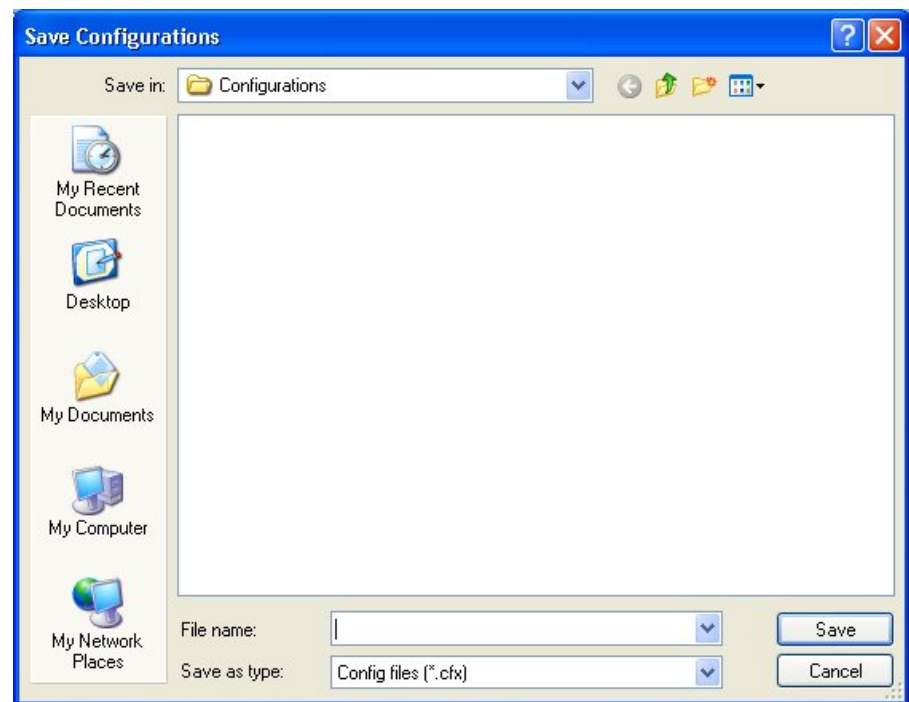
The background colour also serves as a progress bar for the transaction.

### 3.6.9 Download configuration

You save the current configuration for a device in a file.

- (1) Select the desired device in the main window on the **Devices** record card.
- (2) Click the ▼ icon or open the shortcut menu by right-clicking and select **Download configuration**.


The **Save configurations** window opens. By default the configuration files are saved to *My Documents\Funkwerk\Dime Manager\Configurations*. You can change the path to the configuration files (see *Change the path to the configuration files* on page 30).



- (3) Select the required directory, enter a name for the configuration file and click **Save**.  
The **Download configuration** window opens.
- (4) Check your entries, change them if necessary and click **Start**.  
The configuration file is saved.  
Whilst the action is running the *Save configuration* message is displayed in the **Devices** window in the **Action** column in black or white depending on the background colour. Once the action is successfully completed, the *Save configuration* message appears in green. If the action fails, the *Save configuration* message appears in red.  
The background colour also serves as a progress bar for the transaction.

### 3.6.10 Reboot device

You can reboot a device from the **Dime Manager**.

- (1) Select the desired device in the main window on the **Devices** record card.
- (2) Click the  icon or open the shortcut menu by right-clicking and select **Reboot device**.

The **Device Reboot** window opens. The parameters for the selected device are displayed.



- (3) Click **Start**.

The device is rebooted.


Whilst the action is running the *Reboot device* message is displayed in the **Devices** window in the **Action** column in black or white depending on the background colour. Once the action is successfully completed, the *Reboot device* message appears in green. If the action fails, the *Reboot device* message appears in red.

The background colour also serves as a progress bar for the transaction.

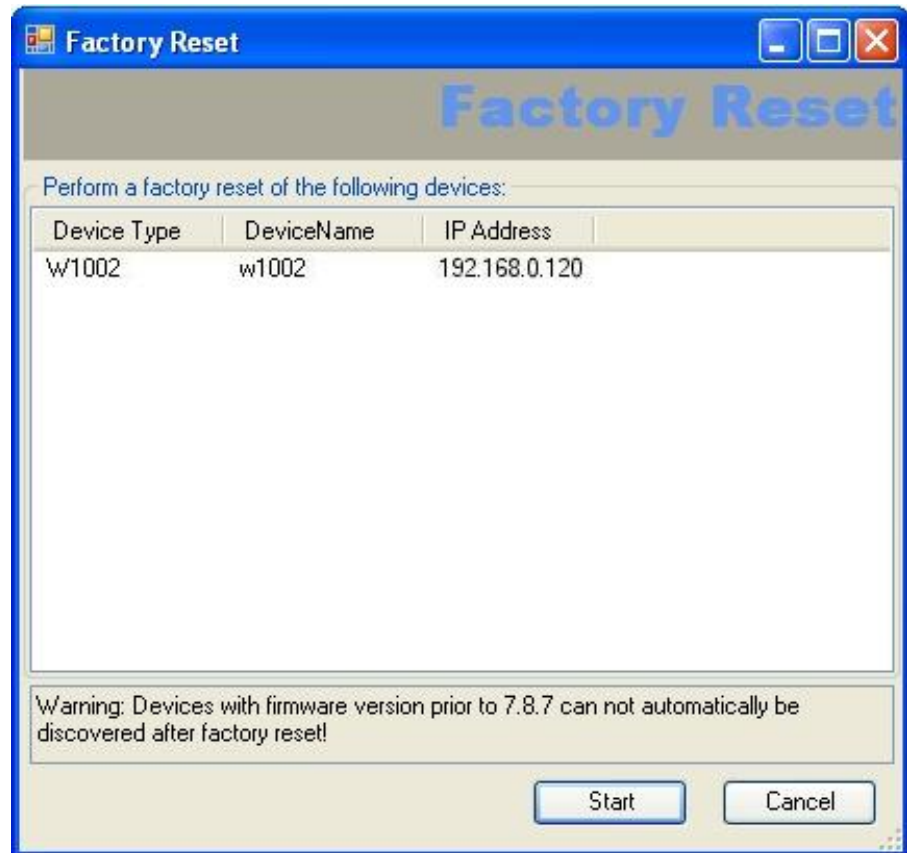


### 3.6.11 Reset default settings

You can reset a device to its default settings. The configuration will be lost if you do not save it first (see [Download configuration](#) on page 49).

- (1) Select the desired device in the main window on the **Devices** record card.
- (2) Click the  icon or open the shortcut menu by right-clicking and select **Reset device to factory settings**.

The **Factory Reset** window opens. The parameters for the selected device are displayed.



- (3) Click **Start**.


The device is reset to the default settings.

Whilst the action is running the *Define default settings* message is displayed in the **Devices** window in the **Action** column in black or white depending on the background colour. Once the action is successfully completed, the *Define default settings* message appears in green. If the action fails, the *Define default settings* message appears in red.

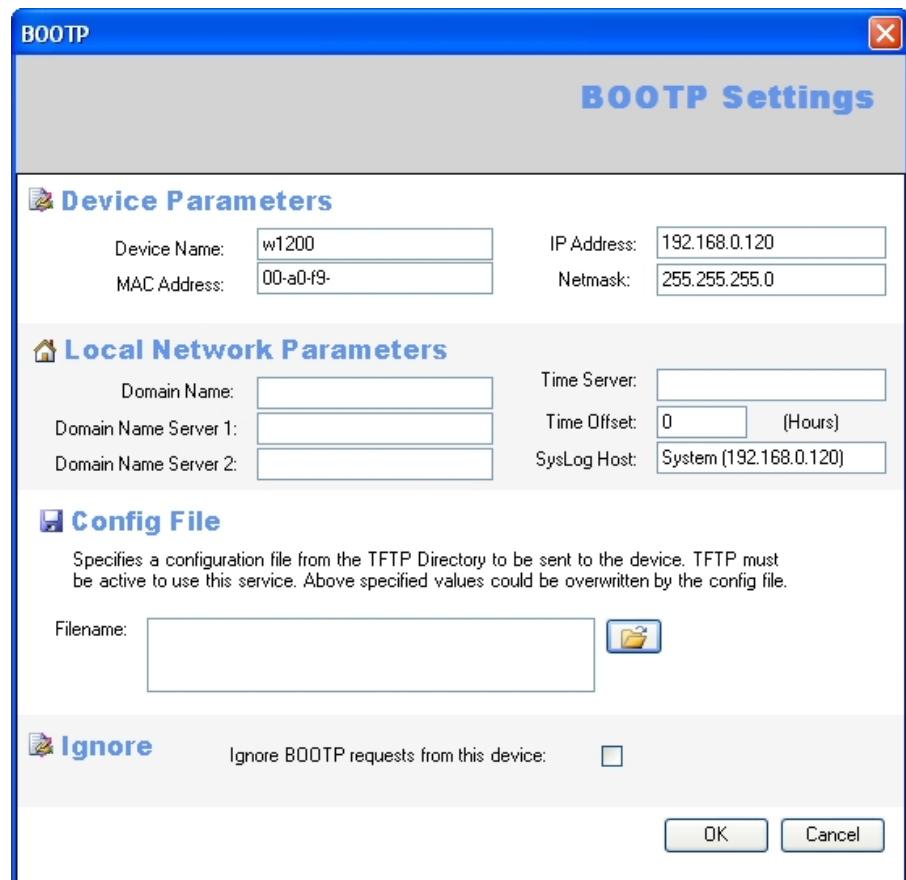
The background colour also serves as a progress bar for the transaction.

### 3.6.12 Define parameters for a device via BOOTP

You can define parameters for a device via BOOTP.

- (1) Select the desired device in the main window on the **Devices** record card.
- (2) Click the  icon or open the shortcut menu by right-clicking and select **Configure BOOTP**.

The **BOOTP** window opens.



**BOOTP Settings**

**Device Parameters**


Device Name:  IP Address:   
 MAC Address:  Netmask:

**Local Network Parameters**

Domain Name:  Time Server:   
 Domain Name Server 1:  Time Offset:  (Hours)  
 Domain Name Server 2:  SysLog Host:

**Config File**

Specifies a configuration file from the TFTP Directory to be sent to the device. TFTP must be active to use this service. Above specified values could be overwritten by the config file.

Filename:  

**Ignore** Ignore BOOTP requests from this device:

OK Cancel

- (3) Change or add the displayed parameters as required.
- (4) If you wish to transfer a configuration file to the device, select the required file.



#### Note


Note that the TFTP service must be running to transfer a configuration file (see [Start or stop TFTP service](#) on page 34).

- (5) Click **OK**.

The parameters are transferred to the device as soon as it sends a BOOTP request.

### 3.6.13 Delete device

You can delete a device from the list on the **Devices** record card.

- (1) Select the desired device in the main window on the **Devices** record card.
- (2) Click the  icon or open the shortcut menu by right-clicking and select **Delete**.

The device is deleted from the list of devices.

## 3.7 Perform tasks with drag and drop

You can perform various tasks quickly and easily using drag and drop, e.g.

- Save the configuration in the **Dime Manager**
- Update the firmware in devices
- Update the configuration in devices

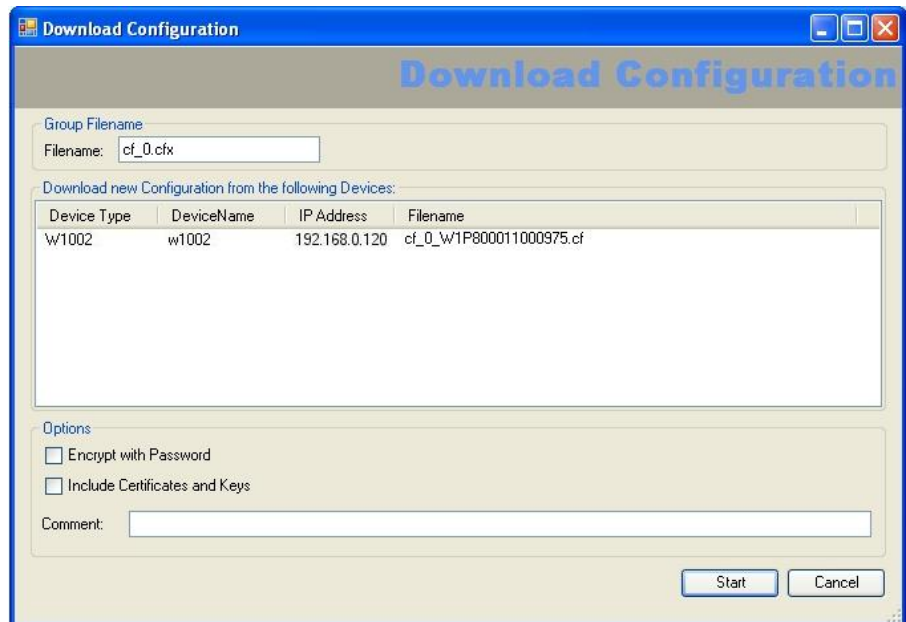
### 3.7.1 Save configuration with drag and drop

You can save the configuration for a device or several devices with drag and drop in the **Dime Manager**.

- (1) Select **Maintenance** -> **Window** in the **Configurations** field to open the **Configurations** menu.
- (2) Select a device or several devices on the **Devices** record card.
- (3) Press and hold the mouse button to drag the device(s) to the **Configurations** window and then release.

The **Download configuration** window opens. You can enter a name for the group configuration file in the **Filename** field. The first group configuration file that you save is assigned the name *cf\_0.cfx* by default. Other files are numbered: *cf\_1.cfx*, *cf\_2.cfx* and so on.

You can open the cfx files with an editor and view the saved information.



- (4) Click **Start**.

The configuration of each device is saved in a file and a configuration file is also created for all devices, a so-called **group configuration file**. In the tooltip for the respective file you can see for which devices the file is suitable.

Whilst the action is running the *Save configuration* message is displayed in the **Devices** menu in the **Action** column in the row for the respective device in black or white depending on the background colour. Once the action is completed, the *Save configuration* message appears in green. If the action fails, the *Save configuration* message appears in red.

The background colour also serves as a progress bar for the transaction.

You can open and view configuration files using an editor.

## 3.7.2 Update firmware with drag and drop

You can update the firmware for one device or several devices with drag and drop.

- (1) Select **Maintenance** -> **Window** in the **Firmware** field to open the **Firmware** menu.
- (2) If you wish to update the firmware files, which are saved in the **Dime Manager**, select **Maintenance** -> **Configure** in the **Firmware** field, carry out the desired settings in the **Firmware Information** window (see [Change path to the firmware files / Update firmware files](#) on page 32) and click **OK**.

The firmware files are updated as required.

- (3) If you wish to update the firmware for a single device, select the corresponding firmware file in the **Firmware** window, press and hold the mouse button and drag it to the desired device on the **Devices** record card.

The firmware for the selected device is updated.

Whilst the action is running the *Update firmware from file* message is displayed in the **Devices** window in the **Action** column in black or white depending on the background colour. Once the action is successfully completed, the *Update firmware from file* message appears in green. If the action fails, the *Update firmware from file* message appears in red.

- (4) If you wish to update the firmware for several devices of the same type (e.g. **R1200**), select the desired devices on the **Devices** record card and a suitable firmware file in the **Firmware** window.
- (5) Press and hold the mouse button to drag the selected devices to the **Devices** record card and then release the mouse button.

The firmware for the selected devices is updated.

Whilst the action is running the *Update firmware from file* message is displayed in the **Devices** window in the **Action** column in the row for the corresponding device in black or white depending on the background colour. Once the action is successfully completed, the *Update firmware from file* message appears in green. If the action fails, the *Update firmware from file* message appears in red.

The background colour also serves as a progress bar for the transaction.



#### Note

Reboot the device to activate the new firmware (see [Reboot device](#) on page 50).

### 3.7.3 Load configuration with drag and drop in a single device

You can load a configuration file with drag and drop in a single device. To do this, you can use one of the configuration files that you have saved previously in the configuration directory (see [Download configuration](#) on page 49 or [Save configuration with drag and drop](#) on page 53).

- (1) Select **Maintenance** -> **Window** in the **Configurations** field to open the **Configurations** menu.
- (2) Select the device into which you wish to load a configuration file in the main window on the **Devices** record card.
- (3) Select the configuration file you wish to load into the device in the **Configurations** window.
- (4) Press and hold the mouse button to drag the file to the selected device and then release the mouse button.

The configuration file is loaded into the selected device.

Whilst the action is running the *Update configuration* message is displayed in the **Devices** window in the **Action** column in black or white depending on the back-

ground colour. Once the action is successfully completed, the *Update configuration* message appears in green. If the action fails, the *Update configuration* message appears in red.

The background colour also serves as a progress bar for the transaction.

### 3.7.4 Load configuration with drag and drop in multiple devices

You can load a configuration file with drag and drop in multiple devices in a single step. To do this, you can use the files that you have saved previously in the configuration directory (see [Download configuration](#) on page 49 or [Save configuration with drag and drop](#) on page 53). For devices of the same type (e.g. **R1200**) you can use the same configuration file; for devices of different types you can use a group configuration file (see [Save configuration with drag and drop](#) on page 53).

- (1) Select **Maintenance** -> **Window** in the **Configurations** field to open the **Configurations** menu.  
You can display the available configuration and group configuration files.
- (2) Select the devices into which you wish to load a configuration file in the main window on the **Devices** record card.
- (3) If you wish to load a configuration into devices of the same type, select the configuration file you wish to load into the devices in the **Configurations** window.
- (4) If you wish to load a configuration into devices of different types, select the group configuration file you wish to use for the devices in the **Configurations** window.
- (5) Press and hold the mouse button to drag the selected file to the selected devices and then release the mouse button.

The configuration file is loaded into the selected devices.

Whilst the action is running the *Update configuration* message is displayed in the **Devices** window in the **Action** column in the row for the respective device in black or white depending on the background colour. Once the action is successfully completed, the *Update configuration* message appears in green. If the action fails, the *Update configuration* message appears in red.

The background colour also serves as a progress bar for the transaction.

## Index

### A

- Action 12
- Add devices manually 24

### B

- BOOTP 32 , 52
- BOOTP parameters 36 , 52
- BOOTP record card 12
- BOOTP service 36

### C

- Change language 37
- Change password 39
- Change path to the firmware files 32
- Change the path to the configuration files 30
- Change window display 22
- Configuration files 28 , 30
- Configuration via FCI 41
- Configuration via FCI - secure 42
- Configuration with the Setup Tool 42
- Copyright 38

### D

- Default settings 51
- Define parameters via BOOTP 36
- Define TFTP settings 33
- Delete device 53
- Device Explorer 9
- Device parameters 39
- Device Properties 16
- Devices 2
- Devices log 37 , 37 , 37
- Devices log window 37
- Devices record card 12
- Dime Manager log 37 , 37 , 37
- Dime Manager log window 37
- Discover 24
- Display BOOTP devices 36

- Display configuration files 28
- Display devices 25
- Display field 12
- Display firmware files 31
- Display information 38
- Dock window 8
- Drag and drop 53 , 53 , 54 , 55 , 56

### E

- Elements 8

### F

- FCI configuration 41
- File window 21
- Firmware 46
- Firmware files 32

### G

- General settings 36

### H

- Help 39
- HTTP configuration - FCI 41
- HTTPS configuration - (FCI) - secure 42

### I

- Installation 3
- IP Configuration 16
- IP settings 39

### L

- Load configuration 48 , 55 , 56
- Load configuration with drag and drop 55 , 56
- Load search results 27 , 27
- Log 21
- Log window 21

### M

- Main window 10
- Maintenance 27
- Menu bar 9
- Misc 16
- O**
- Open BOOTP log window 34
- Open TFTP log window 33
- Operation 22
- Operation icons 22
- P**
- PC system requirements 2
- Position window 8
- Possible Applications 1
- R**
- Reboot 50
- Reboot device 50
- S**
- Save configuration 49 , 53
- Save configuration with drag and drop 53
- Save device list 26
- Save search results 26
- Search for devices 24
- Search for devices in the background 25
- Search for folders 30
- Secure configuration via FCI 42
- Select devices 22
- Select TELNET Client 37
- Services 32
- Settings 36
- Shortcut menu 11 , 39
- Software system requirements 2
- Start TFTP service 34
- States 16
- Status 12
- Status icon colours 12
- Status icons 12
- Stop TFTP service 34 , 34
- Supported devices 2
- System requirements 2
- T**
- Task bar 11 , 39
- Tasks 24
- Tasks with drag and drop 53
- Tasks with the shortcut menu 39
- Tasks with the task bar 39
- TELNET Client 2 , 37
- TELNET configuration - Setup 42
- TFTP 32
- U**
- Update firmware 54
- Update firmware - File 43
- Update firmware - Funkwerk server 46
- Update firmware - Web server 44
- Update firmware files 32
- Update firmware with drag and drop 54
- User interface 8
- V**
- Version 38
- W**
- Window 8 , 21
- Window display icons 22