

Quick Install Guide

X1200

X1200 is a full-featured, high-speed ISDN Internet Access Router for both single users and small-sized companies.

With the Configuration Wizard on your BinTec Companion CD, BinTec Communications AG offers you a quick and convenient way to start running your X1200. You can create a basic configuration via the serial interface of your Windows PC. This basic configuration includes all the important settings of the router, access to the Internet via an Internet Service Provider (ISP), as well as connection to a WAN partner (e.g. to a corporate headquarters). As the Configuration Wizard guides you step by step through the configuration, detailed knowledge of networking technologies is not necessary. Graphic illustrations and a detailed online help system you can access at any time during the configuration give you additional support.

The Configuration Wizard is one of several possible ways of configuring your router. Access to your router in this case is via the serial interface. Additional methods of accessing your router are described in your User's Guide and these can be used to fine tune your configuration.

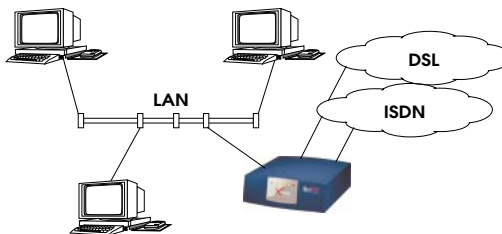
The following system requirements are necessary:

- Windows 95, 98 or Windows NT 4.0 or Windows 2000
- Network card installed (Ethernet)
- Installed Microsoft TCP/IP protocol (see Section 2 "Checking and Installing the TCP/IP Protocol")
- High color monitor (more than 256 colors) for correct display of graphics

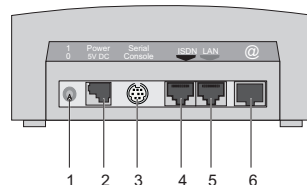
This Quick Install Guide takes you step by step through the basic configuration of your X1200. Congratulations on your new purchase and have fun!

1 Setting up and Connecting

You can integrate your router in a local area network (LAN):



All ports are located on the back plane of your router:



Connect the cables in the following order:

- ▲ **Caution!** The use of the wrong mains adaptor may damage your router! Use only the mains adaptor supplied with the equipment!
- ▲ **Caution!** Incorrect cabling of the ISDN and LAN interfaces may also damage your router! Make sure you connect the LAN interface of the router to the LAN interface of the PC/hub and the ISDN interface of the router to the ISDN connection.
- Connect the serial port of your PC (COM1 or COM2) to the serial port (3) of your router. Use only the serial cable (gray) supplied with the equipment.
- LAN: Connect the LAN interface (marked red) of your router (5) to your LAN using the red LAN cable supplied.
- Single user system: Connect the LAN interface (marked red) of your router (5) to the network card of your PC. Use only the red LAN cable supplied and the adaptor cable. Connect the two cables together.
- Connect the ISDN interface of the router (4) to your ISDN socket using the black ISDN cable supplied.
- Connect the interface (marked @) of the router (6) to the 10Base-T interface of the T-DSL modem. Use only the cable supplied for this purpose by Deutsche Telekom AG.
- Connect the router (2) to a mains socket using the mains adaptor supplied. Switch the router on with the power switch (1).

2 In Advance of Configuration

Router Settings

Before you start to configure your router, make sure you know the following information about your T-ISDN dsl connection and your network environment. Write down your values in the table below so that you can quickly find the necessary information while you are performing the configuration. Examples are shown.

- ISDN numbers: The phone numbers of your ISDN connection.
- If you have an existing network, ask your system administrator for the IP address and netmask of your router. If you are installing a new network, simply use the example values given.

Access data	Example	Your value
ISDN numbers	10, 11, 12	
Router's IP address	192.168.1.254	
Router's netmask	255.255.255.0	

High-Speed Internet Access

At present, you can only configure high-speed Internet access in Germany if you use the Internet Service Provider (ISP) T-Online. You need access data for the Internet, which you receive from the ISP.

Access data	Example	Your value
Provider name	T-Online	
User account	MyName	
T-Online number	1234567	
Joint user account (other user code)	0001	
Password	TopSecret	

Corporate Network Connection (LAN-LAN Connection)

For the connection to a corporate network or another WAN partner, you must have the following information about the opposite terminal.

Access data	Example	Your value
Partner's name	BigBoss	
Dial-in number	0911987654321	
Local name	LittleIndian	
Password	Secret	
Partner's network address(es)	10.1.1.0	
Partner's netmask(s)	255.255.255.0	

Agree upon the data with your partner: You must both use the same password; your entry under "Local name" must be the same as the name your partner uses for you as WAN partner; your entry for "Partner name" must be the same as the name your partner uses as local name.

Checking and Installing the TCP/IP Protocol

The TCP/IP protocol is the "language" PCs use to communicate over the network and to connect to the Internet. Make sure the TCP/IP protocol is installed before you start the configuration. To check if the TCP/IP protocol is already installed or to install it now, proceed as follows:

- Click **Settings** ► **Control Panel** in the Start menu. Double click **Network**.
- Windows 95/98: Look for **TCP/IP** in the list of network components.
- For Windows NT: Select the **Protocols** tab. Search in the network protocols list for **TCP/IP protocol**.
- If you can't find this entry, install the TCP/IP protocol as described below. Otherwise, close the dialog box and start configuration (Section 3).

Installing the TCP/IP protocol:

- Windows 95/98: Click **Add** in the **Network** dialog box. Select **Protocol** in the list of network components. Click **Add**. Select **Microsoft** as manufacturer and **TCP/IP** as network protocol. Click **OK**. In an existing network, you might have to configure additional settings here. Ask your system administrator. If you are setting up a new network, click **OK**. Your PC is now configured as a DHCP client.
- For Windows NT: Click the **Protocols** tab in the **Network** dialog box. Click **Add**. Select **TCP/IP protocol** from the list of network protocols. Click **OK**. Click **Yes** if you are configuring a new network (PC as DHCP client). In an existing network, ask your system administrator.
- Follow the instructions on the screen and finally restart your PC. Repeat the installation on all PCs with which you need to access the Internet or corporate network.

3

Installing BRICKware

- Close all Windows programs on your PC.
- Place your BinTec Companion CD in the CD-ROM drive of your PC. The Start window appears automatically after a short time. If the Start window does not open automatically, click your CD-ROM drive in Windows Explorer and double-click **setup.exe**.
- Click **BRICKware**. The setup program starts.
- Specify the directory in which BRICKware should be installed.
- Select your router, in this case X1200.
- Select the software components you wish to install. Simply choose from the preset list.

The Activity Monitor monitors your router connections. The DIME Tools

comprise mainly configuration assistants, which are not necessary for the basic configuration of X1200. The Configuration Wizard starts after the installation.

4

Configuring your Router

The configuration of your router is quick and easy with the Configuration Wizard. Please note: If you have already configured your router with the Configuration Wizard, the Wizard can assume the preset values. At the end, the configuration is transferred to the router and saved on the PC.

You can carry out the configuration in either Quick Mode or Expert Mode. If you are unfamiliar with networking technologies, choose Quick Mode.

You can select from the following configuration options: basic router configuration, Internet access and corporate network connection (LAN-LAN connection). The basic router configuration is essential. It integrates the router in your local network and enables the use of communications applications (CAPI).

- Select the desired options and follow the instructions on the screen.
- If you have set up a new network and installed the TCP/IP protocol on the PC as described above, configure your router as a DHCP server.

In this case, the PC must be assigned an IP address at the end of configuration. This happens automatically under Windows NT. Under Windows 95 or 98, the Configuration Wizard starts the program WINIPCFG:

- Click **Yes** to start WINIPCFG. Click **Renew All** and then click **OK**.

5

Configuring a PC

If you have selected communications applications (CAPI) during configuration, you will now be asked to perform CAPI configuration. CAPI allows you to send and receive fax messages, use an answering machine, etc.

- Click **Yes** to start configuration. If not entered already, enter the IP address of your router in the **Remote CAPI** tab and enter the user name and password for the users of telematic services entered previously in the Configuration Wizard. Click **Use these values**. Click **OK**.

To be able to use fax services on your PC, you must also install a CAPI application such as RVS-Com Lite. RVS-Com Lite is included on your BinTec Companion CD.

- Click **RVS-Com Lite** in the setup program (see Section 3 "Installing BRICKware") to install RVS-Com Lite and follow the instructions on the screen. An online help system is also available.

You can set up Internet access over your router for all PCs in the same network as your router. In order to do this, you must configure the router as gateway and as DNS on all PCs that have not been configured as

DHCP clients. Proceed as follows:

- In the start menu click **Settings** ► **Control Panel**. Double click **Network**.
- Select **TCP/IP** in the network components list (for Windows NT this is on the **Protocols** tab) and click **Properties**.
- Enter the IP address of your router in the **Gateway** tab under **New Gateway**. Click **Add**. (Windows NT: Enter the IP address of your router in the **IP Address** tab under **Standard Gateway**).
- Click the **DNS Configuration** tab and enter the IP address of your router under **DNS Server Search Order**. (Windows NT: Click the **DNS** tab and enter the IP address of your router under **DNS Server Search Order**. Click **Add** and then **OK**. Follow the instructions on the screen.

6

Testing the Configuration

You have successfully finished the configuration of your router!

- Remove the cable from the serial port of your router now.
- ⚠ **Caution!** Incorrect configuration of the devices in your LAN may result in unintended connections and increased charges! Monitor your router and make sure it does not establish unwanted connections (and charges). Observe the LED displays of your router (LED L1/L2 on: connection is set up) or use the Activity Monitor (see User's Guide).
- Test the connection to your router. Click **Run** in the Start menu and enter **ping**, followed by a space and the IP address of your router. A window appears with the response "**Reply from...**".
- Now open your Internet Browser and enter **www.bintec.de**. to test access to the Internet. BinTec's Internet pages contain the latest news, updates and further documentation.

