



# **Corporate Access (BIANCA/BRICK-XL BIANCA/BRICK-XL2 BIANCA/BRICK-XMP)**

## **Release Notes**

System Software Release 5.1 Revision 1

October 28, 1999



## New System Software

### Release 5.1 Revision 1

This document describes the new features, changes, bugfixes and known issues made to the system software in Release 5.1 Revision 1 for the Corporate Access product group (BIANCA/BRICK-XL and BIANCA/BRICK-XL 2 and BIANCA/BRICK-XMP).



From Release 5.1 Revision 1, Release Notes of Bintec's software images will be divided into three categories based on the three product groups: Corporate Access, which includes BIANCA/BRICK-XL/XL2 and BIANCA/BRICK-XMP; Workgroup Access, which includes BIANCA/BRICK-XM2 and BIANCA/BRICK-XS2; and Personal Access, including BinGO!

<b>1</b>	<b>Upgrading System Software</b>	<b>7</b>
<b>2</b>	<b>New Features in Release 5.1.1</b>	<b>9</b>
<b>2.1</b>	<b>Windows Activity Monitor</b>	<b>9</b>
2.1.1	Configure the <b>BRICK</b>	<b>10</b>
2.1.2	Windows Application	13
<b>2.2</b>	<b>Keepalive Monitoring</b>	<b>13</b>
<b>2.3</b>	<b>ISDN Channel Reservation</b>	<b>20</b>
<b>2.4</b>	<b>Improved Bandwidth On Demand</b>	<b>23</b>
<b>2.5</b>	<b>VPN and NAT</b>	<b>37</b>
2.5.1	Constellation	38
2.5.2	What's new?	39
2.5.3	Configuration	41
<b>2.6</b>	<b>NetBIOS over NAT</b>	<b>45</b>
<b>2.7</b>	<b>NetBIOS Node Type by DHCP</b>	<b>55</b>
<b>2.8</b>	<b>MS-Callback Termination Option</b>	<b>57</b>
<b>2.9</b>	<b>Optional Retrain for Modem Connections</b>	<b>59</b>
<b>2.10</b>	<b>RADIUS for Dial-Out</b>	<b>60</b>
2.10.1	Introduction	60
2.10.2	Configuration on the BRICK	61
2.10.3	Configuration on the RADIUS server	63
<b>3</b>	<b>Changes/Improvements</b>	<b>75</b>
<b>3.1</b>	<b>PPP</b>	<b>75</b>
3.1.1	Permanent Connection	75
<b>3.2</b>	<b>ETHER</b>	<b>75</b>

3.2.1	Improved Autonegotiation for Fast Ethernet	75
<b>3.3</b>	<b>IP</b>	<b>76</b>
3.3.1	No Longer Automatic IP Conversion	76
<b>3.4</b>	<b>RADIUS</b>	<b>77</b>
3.4.1	Additional RADIUS Attributes now Supported	77
<b>3.5</b>	<b>CAPI</b>	<b>78</b>
3.5.1	XL2 as Fax Server on S2M Connections	78
3.5.2	CAPI Info Syslog Message	78
<b>3.6</b>	<b>Bridge</b>	<b>78</b>
3.6.1	New SNMP Variables for Bridging	78
<b>3.7</b>	<b>System</b>	<b>80</b>
3.7.1	No Autologout during Update	80
3.7.2	Trace Application Modification	80
3.7.3	Setup Tool <b>SYSTEM</b> Menu	80
<b>4</b>	<b>Bug Fixes</b>	<b>82</b>
<b>4.1</b>	<b>Setup Tool</b>	<b>82</b>
4.1.1	Setup Tool Crash after SAVE in Extended Interface Settings	82
4.1.2	Setup Tool Crash in X.25 Call Monitor	82
4.1.3	CLID Configuration in Setup Tool Flawed	82
<b>4.2</b>	<b>X.25</b>	<b>83</b>
4.2.1	X.25 Reset Response	83
4.2.2	X.25 Configuration with Setup Tool Faulty	83
4.2.3	File Transfer from X.21 to S2M	83
4.2.4	TPO Bridge Restrictions	83
4.2.5	TPO Bridge Malfunction	84
4.2.6	X.25 Dialout Calls not Disconnected	84
<b>4.3</b>	<b>CAPI</b>	<b>84</b>

4.3.1	<b>BRICK</b> XM & XL Fax Application	84
4.3.2	CAPI via X.31 on D-Channel	85
4.3.3	BRICK-XL Fax Application	85
4.3.4	Connection Delays with CAPI or a TPO Bridge	85
4.3.5	Data_B3_IND Data Handle Counted up to 2	85
4.3.6	CAPI and Incorrect Bearer Capability	86
4.3.7	Connection Difficulties with CAPI 1.1 Applications	86
4.3.8	Transmission Failure after Protocol Switching	86
4.3.9	Faxing Problems with XL and FM8MOD	86
<b>4.4</b>	<b>ISDN</b>	<b>87</b>
4.4.1	Problems with Autoconfiguration	87
4.4.2	Leased Line of Channel 31 Ineffective on Booting	87
4.4.3	Connected Address with 1TR6 Leading to Connection Failure	87
<b>4.5</b>	<b>TAF</b>	<b>88</b>
4.5.1	Routing with TAF	88
4.5.2	Premature Expiry of TAF Authentication	88
<b>4.6</b>	<b>System</b>	<b>88</b>
4.6.1	Multiple Simultaneous Logins Jam BRICK	88
4.6.2	Number of Columns in the SNMP Shell	89
<b>4.7</b>	<b>PPP</b>	<b>89</b>
4.7.1	Channel Bundling and Dynamic Short Hold Malfunction	89
4.7.2	MS-Callback (CBCP) Working on the 2nd Attempt	89
4.7.3	Charging Amounts Logged Incorrectly	90
4.7.4	Link Quality Monitoring Set to "0"	<b>90</b>
4.7.5	Problems Accessing Compuserve for the First Time	90
4.7.6	Termination of VPN Connections	91
4.7.7	Tracing a VPN Connection	92
4.7.8	IPX Compression Protocol has not been Rejected	92
4.7.9	Link Quality Monitoring (LQM)	92

4.7.10	Microsoft Point-to-Point Compression (MPPC)	92
<b>4.8</b>	<b>OSPF</b>	<b>93</b>
4.8.1	Leased Line Bundle and OSPF	93
<b>4.9</b>	<b>RADIUS</b>	<b>93</b>
4.9.1	Framed-IP Address = 255.255.255.254	93
4.9.2	Authentication Caused Memory Leakage	94
<b>4.10</b>	<b>HTTP Status Page</b>	<b>94</b>
4.10.1	Internet Explorer 4.0	94
4.10.2	More than Two FM-8MOD Modules Installed	95
<b>4.11</b>	<b>IP</b>	<b>95</b>
4.11.1	IP-Address via DHCP	95
<b>4.12</b>	<b>Bridge</b>	<b>95</b>
4.12.1	Compensation of Multiple Paths	95
<b>5</b>	<b>Known Issues</b>	<b>96</b>
<b>5.1</b>	<b>FM-8MOD: No Module Detected</b>	<b>96</b>
<b>5.2</b>	<b>Outgoing FTP Connections via NAT</b>	<b>96</b>
<b>5.3</b>	<b>Bridging and ISDN Leased Line Bundles</b>	<b>96</b>
<b>5.4</b>	<b>BOD not Activated due to Load Error</b>	<b>97</b>
<b>5.5</b>	<b>Secure VPN and the BRICK</b>	<b>97</b>

# 1 Upgrading System Software

- Retrieve the current system software image from BinTec's WWW server at <http://www.bintec.de> (Section: Download).
- With this image you can upgrade the BIANCA/BRICK with the `update` command from the SNMP shell via a remote host (i.e. using telnet, minipad, or isdnlogin) or by using the BOOTmonitor, if you are logged in directly on the console.  
Information on using the BOOTmonitor can be found in the BIANCA/BRICK User's Guides under Firmware Upgrades.



## Caution!

- Do not update your Logic or BOOTmonitor images unless expressly instructed to do so.  
Normally, it is not necessary to upgrade these images. Only in exceptional cases is an upgrade explicitly recommended.
- If you are unsure whether to upgrade or not, read the Release Note Logic where you will find tables that specify the appropriate Logic and BOOTmonitor versions available for your BinTec product, and if an update is recommended or not.



Please note that there is an update procedure in case there is not enough memory available to perform a software update via the `update` command from the SNMP shell. The incremental update loads the new software image in blocks of 64 KB via TFTP and writes it to the Flash ROM immediately.

Because this procedure offers no possibility to check the integrity of the image:

➤ first use the option “-v” that verifies the image file.

- Once you’ve installed Release 5.1 Revision 1, you may want to retrieve the latest documentation (in Adobe’s PDF format), which is also available from BinTec’s WWW server at the address noted above.



When upgrading system software, it is also recommended that you use the most current versions of BRICKware for Windows and UNIX Tools. Both can be retrieved from BinTec’s WWW server.



If you are updating from a software release equal to or older than 4.7.x to the current version, 5.1.1 or later, it is necessary to firstly upgrade to 4.9.3, save the configuration, then upgrade to 5.1.1. If you update directly from 4.7.x to 5.1.x, the old IP access lists can not be automatically converted and are lost.



## 2 New Features in Release 5.1.1

### 2.1 Windows Activity Monitor

With Release 5.1.1, you can configure a **BRICK** to be monitored by the new Windows Activity Monitor which is available with the new BRICKware Release 5.1.1.

#### Why the Activity Monitor?

With the Activity Monitor, Windows users can monitor the activities of a **BRICK**. Important information like system status of physical interfaces (e. g. ISDN line) and virtual interfaces (e. g. WAN partners) are easily available with ONE tool. A clear and complete overview of the load of a **BRICK**'s interfaces is possible at any time. The following illustration shows the state of a CM-PRI interface.

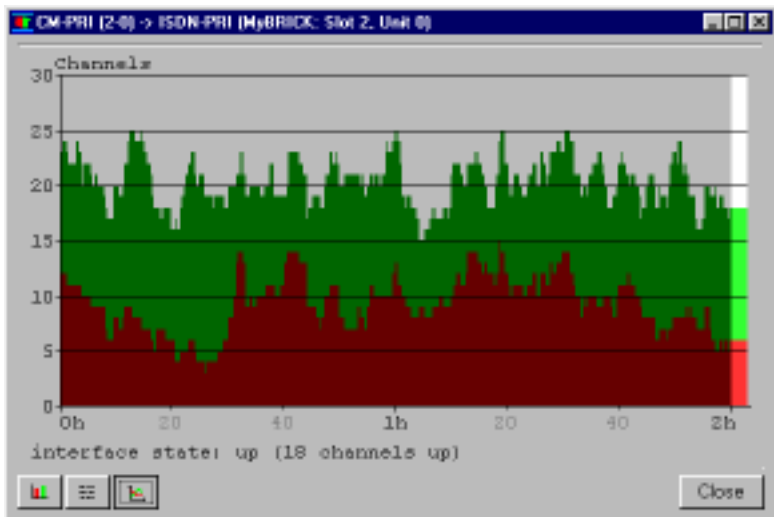


Figure 2-1: Activity Monitor display of a CM-PRI interface

## How does it work?

A status daemon collects information about the **BRICK** and transmits it in the form of UDP packets to the LAN's broadcast address (default) or to a specified IP address. One packet per **BRICK** interface and time interval, which is individually adjustable from 1 to 60 seconds, is sent. All physical interfaces and up to 100 virtual interfaces can be monitored unless the packet size of approx. 4000 bytes is not exceeded. A Windows application on your PC, which will be available with the new BRICKware Release 5.1.1, receives the packets and displays the information in different ways.

To activate the Activity Monitor you have to

- configure the **BRICK(s)** to be monitored (this step is described in this Release Note)
- start the Windows application on your PC and use it (this step will be described in the new, updated **BRICKware for Windows**, available with the new BRICKware Release 5.1.1)

### 2.1.1 Configure the **BRICK**

You can perform the required configuration steps on the **BRICK** via

- MIB variables
- Setup Tool

**MIB variables:**

The configuration is made by entries in the MIB table **ExtAdmin** using the following MIB variables:

Variable	Meaning
<b>ExtAdminMonPort</b>	Number of port for the Activity Monitor (default: <i>2107</i> , registered by the IANA - Internet Assigned Numbers Authority).
<b>ExtAdminMonAddress</b>	IP address to which the <b>BRICK</b> sends the UDP packets.  With the default value <i>255.255.255.255</i> the broadcast address of the first LAN interface is used.  Be aware that if you enter the IP address of a WAN partner, connections liable to charges will be made at very regular intervals (default is every 5 seconds).
<b>ExtAdminMonType</b>	Type of information sent with the UDP packets to the Windows application. Possible values: <ul style="list-style-type: none"> <li>■ <i>off</i>: deactivates the Activity Monitor (default value)</li> <li>■ <i>physical</i>: only information about physical interfaces</li> <li>■ <i>physical_virt</i>: information about physical and virtual interfaces</li> </ul>
<b>ExtAdminMonUpdate</b>	Update time in seconds. Possible values: <i>0</i> to <i>60</i> (default: <i>5</i> ).

Table 2-1: **ExtAdmin**

To change the settings, make the following entry (as an example):

```
biboExtAdmMonAddress( rw):      192.168.1.1
biboExtAdmMonPort( rw):        2107
biboExtAdmMonType( rw):        physical_virt
biboExtAdmMonUpdate( rw):      5
```

## Setup Tool

The configuration is made in **SYSTEM** ➤ **EXTERNAL ACTIVITY MONITOR**:

BRICK Setup Tool		BinTec Communications AG
[SYSTEM][ACTIVMON]:External Activity Monitor		MyBinGO!
Client IP Address	192.168.1.1	
Client UDP Port	2107	
Type	physical_virt	
Update Interval (sec)	5	
SAVE		CANCEL
Use <Space> to select		

Field	Meaning
<b>Client IP Address</b>	See <b>ExtAdminMonAddress</b> above.
<b>Client UDP port</b>	See <b>ExtAdminMonPort</b> above.
<b>Type</b>	See <b>ExtAdminMonType</b> above.
<b>Update Interval (sec)</b>	See <b>ExtAdminMonUpdate</b> above.

Table 2-2: **SYSTEM** ➤ **EXTERNAL ACTIVITY MONITOR**

Proceed as follows:

- Go to **SYSTEM** ➤ **EXTERNAL ACTIVITY MONITOR**.
- Enter **Client IP Address**, **Client UDP port**, **Type** and **Update Interval (sec)**.
- Press **SAVE**.

## 2.1.2 Windows Application

How to use the Activity Monitor on your PC will be described in the new, updated **BRICKware for Windows** (available with the new BRICKware Release 5.1.1).

## 2.2 Keepalive Monitoring

Keepalive Monitoring is a new feature that prevents unnecessary connections being made by a central server over the WAN to the router of a LAN. If that server regularly tries to transfer data to the router and its hosts, it may well happen that there are no computers turned on in the LAN and the calls made to the router as well as the costs incurred, of course, are in vain.

The solution to this problem is a monitoring system performed by the router which checks at regular definable intervals whether computers in the router's LAN can be reached or not. By means of a new table, the **ipHostsAliveTable**, the state of specified IP addresses can be monitored by the router. The router tests the accessibility of the computers by pinging them. If, after three attempts, no computer in the LAN is reachable, PPP connections are deactivated by changing the state of the corresponding interface to *down*. If, on the other hand, at least one computer in the LAN responds to the ping, the state of the IP address is set to *alive* and the status of the corresponding interface (**ifAdminStatus**) is set to *up* and PPP connections can be made.

The reachability of the IP address is thus not initiated by the client PC itself. Therefore, the connection of router to client is not necessarily made immediate-

ly after the PC is turned on. The connection is made only after the router itself has established the reachability of the client, a process which is dependent on the monitoring times set.

## WAN Partner Configuration

Essentially, Keepalive Monitoring oversees the accessibility of computers in a LAN and controls the states of the interfaces of WAN partners accordingly. An incoming call from a WAN partner can respond to the state of the interfaces or not, depending on how that WAN partner is configured. Let's look at some of the implications for the effectiveness of Keepalive Monitoring of different WAN partner configurations.

- WAN partners identifiable by CLID
  - If the WAN partner is configured and identifiable by CLID, the call is accepted if the state of that WAN partner's interface (**IfAdminStatus**) is *up*; the call is refused if the state of the interface is *down*. Thus, thanks to Keepalive Monitoring, no unnecessary connections are established.
- In the event of an inband call (non-CLID)
  - If just the one WAN interface is configured with non-CLID, the functionality of Keepalive is guaranteed. When the configured inband WAN partner calls, if the interface has been set to *up*, the call will be correctly taken as there is only one non-CLID interface to match the inband (non-CLID) call.
  - If two or more WAN interfaces are configured with non-CLID and these interfaces are *up*, an inband call will be established although an unnecessary connection may be made. In such a case, the purpose of Keepalive Monitoring, i.e. to prevent unnecessary connections, is not served.
  - If ALL interfaces are down, an inband call is not established.
- Keepalive Monitoring has no effect for calls coming from partners configured on a RADIUS server. In this case, there is no static interface defined for that partner on the BRICK that can be influenced by the monitoring feature.

The MIB table variables in the new IP table (**ipHostsAliveTable**):

inx	Group (rw)	IPAddress (*rw)	State (ro)	Interval (rw)
	DownAction (rw)	FirstIfIndex (ro)	Range (rw)	
00	0	123.124.125.126	down	300
	down	10002	0	

**The meanings of the different variables from the ipHostsAliveTable:**

Variable	Meaning
<b>ipHostsAliveGroup</b>	This is a group of IP addresses that can be monitored. The number of these groups is restricted to ten, the range of values spans from 0 to 9 (0 being the first group, 9 the last). IP addresses in the same group are combined with OR, which means that as long as at least one IP address is reachable in the group, the state of the group is set to <i>alive</i> . The state of the entire group is only set to <i>down</i> when none of the IP addresses in the group is reachable.
<b>ipHostsAliveIPAddress</b>	An IP address that is to be monitored or pinged by the router. The number of IP addresses per group is also restricted to 10, which means that, in total, up to 100 IP addresses can be monitored.
<b>ipHostsAliveState</b>	Here the state of the monitored IP addresses is maintained. The possible values are either <i>alive</i> or <i>down</i> . <i>Alive</i> if the IP address is reachable; <i>down</i> if the IP address is not reachable.

Variable	Meaning
<b>ipHostsAliveInterval</b>	<p>The interval calculated in seconds between which the IP addresses are pinged. The range of values spans from 1 to 65536. (The default value is set at 300 seconds = 5 minutes.)</p> <p>Each IP address is arranged in a group and is given an interval time. A monitoring time is then calculated for each group where the shortest interval of all is used. Then a global monitoring time is calculated using all the group values, again the shortest value is used. The global monitoring time is used to start the program, after booting it could take 2 minutes (if that is the shortest group interval) for the first ping to take place, during which the state of the IP addresses is set to 0. Hosts are then pinged according to the group monitoring time.</p> <p>If there is no reply, the state of the IP address can be reset after three pings. If there is a reply, the state of the IP address changes immediately.</p>
<b>ipHostsAliveDownAction</b>	<p>This variable defines the effect on the defined interfaces if <b>ipHostsAliveState</b> changes to the <i>down</i> state. The possible values are <i>up</i>, <i>down</i> or <i>delete</i> (<i>delete</i> does not affect the <b>ifAdminStatus</b>, but merely deletes the entries of that line in the MIB table), the default is down. The <b>ifAdminStatus</b> of the interface(s) is then changed according to the value in <b>DownAction</b> (see below).</p>



Variable	Meaning
<b>ipHostsAliveFirstIfIndex</b>	This is the first interface number in the index list that is to be affected by the execution of <b>DownAction</b> .
<b>ipHostsAliveRange</b>	This indicates the possible range of numbers of interfaces that can be affected by the execution of <b>DownAction</b> . So if you set <b>FirstIfIndex</b> to 10001 and <b>Range</b> to 0, only the interface 10001 is affected and none other. On the other hand, if, in the same case, you set <b>Range</b> to the default number 4999, all the interfaces with a number between 10001 and 15000 are affected by <b>DownAction</b> .

Table 2-3: **ipHostsAliveTable****Example of an entry in the new IP table (ipHostsAliveTable):**

inx	Group(rw) DownAction(rw)	IPAddress(*rw) FirstIfIndex(ro)	State(ro) Range(rw)	Interval(rw)
00	5 down	192.168.98.129 10003	alive 0	180

This means that the IP address *192.168.98.129* belongs to group 5. The interval between pings is set to 3 minutes. If this IP address is no longer reachable (and, if there are any, all other IP addresses in group 5 are also unreachable), the **ifAdminStatus** of the interface 10003 is set to the *down* state.

## Possible states

Depending on the state of the group and what is specified in **DownAction**, the **ifAdminStatus** for the defined interfaces receive the following values:

Group State	AND	DownAction	=>	ifAdminStatus
<i>alive</i> (reachable)	+	<i>down</i>	=>	<i>ifAdminStatus_up</i>
<i>alive</i> (reachable)	+	<i>up</i>	=>	<i>ifAdminStatus_down</i>
<i>down</i> (not reachable)	+	<i>down</i>	=>	<i>ifAdminStatus_down</i>
<i>down</i> (not reachable)	+	<i>up</i>	=>	<i>ifAdminStatus_up</i>

Table 2-4: **ifAdminStatus**

As the table shows, when the group state is *alive* or *reachable*, the **ifAdminStatus** is set to the contrary of what is specified in **DownAction**. Conversely, when the group state is set to *down*, the **ifAdminStatus** conforms with the specification under **DownAction**.

## One IP address in two groups?

If the same IP address is in two or more different groups with different monitoring times (can occur if the same IP address is allocated to different interfaces), it can happen that the group states of the one IP address are different, as well as the states of the respective interfaces.

For example: let's assume the same IP address appears in two groups. In the first of these groups, the monitoring time is set to 60 seconds, in the second to 300 seconds. If, in both cases, the IP address is not reachable, the state of the first group will be set to *down* after 3 x 60 seconds; the second, after 3 x 300 seconds. There could thus be an interim period when the state of group 1 is set

to *down* and the state of group 2 is set to *up*. This would mean in turn that the interface of the IP address in group 1 is set to *down* in the **ifAdminStatus**, the interface of the same IP address in group 2 is set to *up*.

However, once the IP address is *up* again, the state of the IP address changes in both groups immediately after the reply to the ping from the first group.

## SysLog messages

The following is a list of relevant SysLog messages:

biboAdmSyslogMessage	Log Level
alivepacket sent to xxx.xxx.xxx.xxx (a packet has been sent to the following IP address xxx.xxx.xxx.xxx)	debug
xxx.xxx.xxx.xxx is alive (a packet has been received from the IP address xxx.xxx.xxx.xxx)	debug
no answer from xxx.xxx.xxx.xxx (after three ping attempts, no packet was received from the IP address xxx.xxx.xxx.xxx)	debug
only 10 entries per group are allowed (the user wanted to create more than ten entries in the one group. The entry last attempted is not included in the MIB table)	err
cannot send alivepacket to xxx.xxx.xxx.xxx (a packet could not be sent to the IP address xxx.xxx.xxx.xxx)	err
interface xxxxx set [ <i>up</i>   <i>down</i> ] (the interface numbered xxxxx was set to the <i>up</i> or <i>down</i> state)	info

Table 2-5: **biboAdminSyslogMessage**

## Changing the state of the interface over the SNMP shell

If the state of an interface is changed by the user in the SNMP shell, the program does not register the change. The following pattern of behaviour is possible:

If the state of the IP address is *down* and **DownAction** is also set to *down*, but the user manually sets the **ifAdminStatus** to *up* in the SNMP shell, the interface status remains *up* even if, subsequent to the next three pings, the program has established that the state of the IP address is *down*. The interface status will remain *up* as long as the IP address remains *down*.

However, once the IP address responds to a ping (i.e. the IP address is reachable and its state is thus set to *alive*), the program once again has control over the interfaces. Although this means that nothing changes in this case, i.e. the **ifAdminStatus** remains *up*, the next time this IP address can not be reached and its state is set to *down*, the **ifAdminStatus** of the corresponding interface is also set to *down*.

## 2.3 ISDN Channel Reservation

In order to give you even more control over the number and direction of your calls, the **isdnCreditsTable** has been extended. Up to now it was already possible to specify the maximum number of allowed incoming connections over a certain definable period of time (**isdnCreditsMeasureTime**). Once these limits were reached, they could not be exceeded and no more calls could be made in the direction in which the limitation was set. If a hundred outgoing calls could be made over the period of one day, in theory all those calls could be made in the first hour. This would have meant that during that hour it may have been very difficult to receive any incoming calls at all.

Now, however, this new feature allows you to set the maximum number of incoming calls, outgoing calls, as well as the total number of calls being made at the current moment in time.

**Example 1:**

This means that if it is very important for you that at least half of your PRI B-channels (30 in total) remain open for incoming calls, you can set one of the three new variables, **MaxCurrentOutCon** (the maximum number of outgoing calls), to 15, this would mean that at least 15 channels would be reserved for incoming calls.

**Example 2:**

You may only have two B-channels available. In such a case, it might be prudent to set the maximum number of outgoing calls to 1 as well as the maximum number of incoming calls to 1. You could thus limit the likelihood of missing any important incoming calls. It would, however, mean that, if one outgoing call were being made, an attempt to make a second outgoing call would not be possible.

Finally, you can limit the total number of both incoming and outgoing current connections. You could specify that only twenty of your B-channels are to be made available at any one given time. This last option can only be configured directly in the **isdnCreditsTable** not, however, over Setup Tool.

**Configuration**

The three new variables that have been added to the **isdnCreditsTable** can be configured in the MIB using the SNMP shell:

Variable	Meaning
<b>MaxCurrentInCon</b>	This variable allows you to set the maximum number of current incoming connections
<b>MaxCurrentOutCon</b>	This variable allows you to set the maximum number of current outgoing connections.
<b>MaxCurrentCon</b>	This variable allows you to set the maximum number of incoming as well as outgoing calls currently being made.

Table 2-6: **isdnCreditsTable**

**MaxCurrentInCon** and **MaxCurrentOutCon** can be configured in Setup Tool in the menu **ISDN ► CREDITS ► EDIT**.

<b>BRICK</b> Setup Tool	BinTec Communications AG
[ISDN][CREDITS][EDIT]: Configure ppp Credits	MyBinGO!
Surveillance	on
Measure Time (sec)	6400
Maximum Number of Incoming Connections	off
Maximum Number of Outgoing Connections	on
Maximum Charge	100
	off
Maximum Time for Incoming Connections (sec)	on
	28800
Maximum Time for Outgoing Connections (sec)	on
	28800
Maximum Number of Current Incoming Connections	on
	1
Maximum Number of Current Outgoing Connections	on
	1
SAVE	CANCEL
Enter integer range 0..2147483647	

- Activate **Maximum Number of Incoming/Outgoing Connections** by pressing the Spacebar and changing *off* to *on*.
- Enter the number of B-channels you want to reserve for that direction.
- Press **SAVE**.

In the above example, the two new variables at the bottom of the table are both set to one. This means that it is impossible to make more than one incoming or outgoing call at any one given time.

## Surveillance

It is also possible to observe the number of connections currently being made by going to **MONITORING AND DEBUGGING ► ISDN CREDITS ► SELECT SUBSYSTEM**.

BRICK Setup Tool		BinTec Communications AG	
[Monitor][CREDITS][STAT]: Monitor ppp Credits		MyBinGO!	
	Total	Maximum	%reached
Time till end of measure interval (sec)	84400	86400	2
Number of Incoming Connections	1		1
Number of Outgoing Connections	1		1
Time of Incoming Connections	734		
Time of Outgoing Connections	244		
Charge	0		
Number of Current Incoming Connections	22	22	
Number of Current Outgoing Connections	6	12	
Number of Current Connections	28	28	
Exit			

In this case, the new variables show that twenty-two incoming calls are being made out of a possible total of twenty-two, only six of the permitted twelve outgoing calls are being made, however, because the maximum number of current connections is restricted to twenty-eight.

## 2.4 Improved Bandwidth On Demand

### Dynamic channel bundling of leased lines and dialup lines

With Release 5. 1 Revision 1, Bandwidth On Demand, BOD, over different media is now possible with the BIANCA/BRICK router family.

The bundling of leased lines with dialup lines gives you more control over the switching thresholds and times, bandwidth and costs of your connections.

You can now bundle channels over a new optional table, the **pppExtIfTable**, which can also be configured over Setup Tool, see [Setup Tool configuration, page 30](#) below. You can, for example, specify if you want one or more dialup

lines to be bundled with your leased line, when the load on the leased line reaches a certain level for a certain period of time. You can also specify the kind of algorithm used by which the load of your leased line or bundle is calculated or the number of seconds such a sample calculation should take, giving you more control over the switching of dialup lines.

## Bandwidth On Demand for leased lines

In order to support high levels of traffic over leased lines, dynamic switching of dialup lines is now possible.

BOD is activated by setting the **pppExtIfaceBodMode** variable to *BOD\_active* or *BOD\_passive*. Switching on and off of additional B-channels only occurs in the active mode, i.e. one partner must be configured as an active part the other as a passive part, otherwise call collisions are unavoidable.

Dialup lines are dynamically switched on and off when the line utilization of the leased line/bundle reaches a certain level for a certain period of time (90% or more for 5 seconds to switch on and less than 80% of the remaining links for 10 seconds to switch off, see [Switchover thresholds for BOD, page 34](#) below).

## Backup for leased line connections

Backup operation is also available for leased line connections. Should a leased line fail, for example, a dialup connection is dynamically initiated.

There is no necessity to define another interface for the backup case, as was necessary in the past. Now IPX backup configuration is also possible.

## BOD when leased line is down

Bandwidth On Demand is also available for backup connections, the modes used can be either *BOD\_active*, *BOD\_passive* or *BOD\_backup*. To avail of BOD when the leased line is down, the maximum number of switchable B-channels in the **biboPPPTable (biboPPPMaxConn)** must be correspondingly configured, i.e. set to greater than 1.



If the leased line fails, the first switchable B-channel is used as the backup channel, so a second is required to provide this channel with Bandwidth On Demand. Load-dependent switching then occurs from the side that established the backup connection.

**The new MIB table variables in the PPP group (*pppExtIfTable*) with example and default values:**

```
inx  Index (*rw)      BodMode (-rw)      Algorithm (rw)
      Interval (rw)   Load (ro)         MlpFragmentation (rw)
      MlpFragSize (rw)

      5000            backup            equal
      5               0                proportional
      50
```

**The meanings of the different variables:**

Variable	Meaning
<b>IfIndex</b>	Interface index of the relevant leased line interface.

Variable	Meaning
<b>BodMode</b>	<p>Contains the following values:</p> <p><i>BOD_backup</i></p> <p>If the leased line fails, backup operation is activated. When the leased line is available again, the backup connection is terminated. BOD is also available for this mode, provided <b>biboPPPMaxConn</b> is set to more than 1.</p> <p><i>BOD_active</i></p> <p>Only one partner should be configured as the active partner. Switching on and off of additional B-channels then only occurs from this side.</p> <p><i>BOD_passive</i></p> <p>No switching on and off of additional B-channels occurs from the side of the partner configured as <i>BOD_passive</i>. He participates as a passive partner in the channel bundle.</p> <p><i>BOD_disabled</i></p> <p>No extra channels are opened to support leased lines.</p>

Variable	Meaning
<b>Algorithm</b>	<p>An algorithm for the weighting of throughput within a specified time frame for the calculation of capacity utilization (load). The following values are possible:</p> <p><i>equal</i>: constantly weighted load over the given time frame. This means that all values considered in the time frame contribute in equal measure to the calculation of load.</p> <p><i>proportional</i>: current proportional weighting within the time frame in favour of the latest throughput values. This means the calculation of <b>load</b> is influenced least by the first throughput value in the time frame and most by the most recent value added to the time frame.</p>
<b>Interval</b>	Maximum period in seconds for a throughput measurement sample which is used to calculate the load.
<b>Load</b>	A calculation of the capacity utilization of the bundle in % depending on the selected algorithm and used to determine whether another line should be switched either on or off.

Variable	Meaning
<b>MlpFragmentation</b>	<p>A mode according to which MLP fragments are formed.</p> <p><i>proportional</i>: the fragment size taken from the available bandwidth of the individual links in relation to the total bandwidth of the bundle. This means that if, for example, an X.21 link has 128 000 kbit/s bandwidth and dialup lines 2 and 3 have 64 000 kbit/s each, the X.21 link will receive a greater proportion of each packet, i.e. a larger fragment, than lines 2 and 3.</p> <p><i>equal</i>: as far as is possible, fragments of equal size are formed, the weighting of the bandwidth of a link is made by the number of fragments to be sent on the link. Using the above example, the leased line simply receives more fragments of packets; the fragments, however, remain of equal size.</p>
<b>MlpFragSize</b>	<p>Here you can configure the size of the fragment to be sent. If you have left the setting <i>proportional</i> above (default), the maximum size is used of the number you have configured (you can, of course, leave the default value of 50) and the calculation according to the <b>MlpFragmentation</b> mode. If you have selected <i>equal</i> above, the number you configure represents the size of the fragments.</p>

Table 2-7: PPPExtIfTable

**MlpFragmentation** and **MlpFragSize** can not be configured in Setup Tool and should be left with the default values which are *proportional* and *50* respectively.

## Setup Tool configuration

The following configuration of a leased line with a dialup line bundle via Setup Tool is an example using an X.21 leased line. X.21 is only supported by routers with a CM-X21 module. Configuration of X.21 leased line and dialup line bundles is the same as for ISDN leased line and dialup line bundles:

➤ In the main menu of Setup Tool, go to **WAN Partner**.

BIANCA/BRICK-X21 Setup Tool		BinTec Communications AG
[WAN]: WAN Partners		mybrick
Current WAN Partner Configuration		
Partnername	Protocol	State
Leased, Slot 2 (0)	ppp	down
Partner_1	ppp	down
xi2	ppp	up
ADD	DELETE	EXIT
Press, to scroll, tag/untag DELETE, to edit		

- Select the configured WAN partner you want Bandwidth On Demand for, in the example below xi2. A leased line exists for this WAN partner.

BIANCA/BRICK-X21 Setup Tool	BinTec Communications AG
[WAN][EDIT]: Configure X.21 Leased Line	mybrick
Partner Name	xi2
Encapsulation	ppp
Compression	none
Encryption	none
PPP >	
Advanced Settings >	
IP >	
IPX >	
Bridge >	
SAVE	CANCEL
Press, to scroll, tag/untag DELETE, to edit	

- Select **Advanced Settings**.

BIANCA/BRICK-X21 Setup Tool	BinTec Communications AG
[WAN][EDIT][ADVANCED]:Advanced Settings	mybrick
Extended Interface Settings (optional)	
OK	CANCEL
Press, to scroll, tag/untag DELETE, to edit	

➤ Select **Extended Interface Settings**

BIANCA/BRICK-X21 Setup Tool		BinTec Communications AG
[WAN][EDIT][ADVANCED][EXTIF]:Extended Interface Settings(xi2)		mybrick
Extended Interface Settings not configured yet!		
Mode	Bandwidth on Demand active	
Line Utilization Weighting	equal	
Line Utilization Sample (sec)	5	
Maximum Number of Dialup Channels	2	
SAVE	DELETE CONFIGURATION	CANCEL
Press, to scroll, tag/untag DELETE, to edit		

The variables from the new MIB table, **pppExtIfTable**, can be identified now on the above Setup Tool page as follows:

- **BodMode** is configured under **Mode**.
- **Algorithm** is configured under **Line Utilization Weighting**.
- **Interval** is configured under **Line Utilization Sample**.

Additionally on this Setup Tool page, **Maximum Number of Dialup Channels** (**PPPMaxConn** of the **biboPPPTable**), corresponds to the number of channels to be dynamically switched.

If you have configured **Mode** to *Bandwidth On Demand active*, *Bandwidth On Demand passive* or *Bandwidth On Demand backup* and then you press **SAVE**,



you will return to the previous page, which is now supplemented by the WAN Numbers variable, see below:

BIANCA/BRICK-X21 Setup Tool	BinTec Communications AG
[WAN] [EDIT]: Configure X.21 Leased Line	mybrick
Partner Name	xi2
Encapsulation	ppp
Compression	none
Encryption	none
PPP >	
Advanced Settings >	
WAN Numbers >	
IP >	
IPX >	
Bridge >	
SAVE	CANCEL
Press, to scroll, tag/untag DELETE, to edit	

In order for the dialup connection to be dynamically switched to your partner, it is now necessary to enter the WAN number of the partner and direction, either incoming if you have configured *Bandwidth on Demand passive*, outgoing if you have configured *Bandwidth on Demand active* or both (these settings correspond to the **biboDialDirection** or **biboDialNumber** variables in the **biboDialTable**).

This concludes the configuration of dynamic channel bundling for leased lines over Setup Tool.

## Authentication

On establishing a PPP leased line, though accepted, no authentication is required by the partner. Authentication is essential, however, for the dialup link bundled with the leased line and should be configured in the **biboPPPTable** accordingly. Authentication over Setup Tool is set in the menu **WAN PARTNER** ►

**EDIT ► PPP.** In this case, authentication of the partner is requested for incoming BOD/backup calls.

### LCP echo requests (PPP keepalive)

LCP Echo Requests are only generated on existing leased lines, not, however, on the switched B-channels.

### Switchover thresholds for BOD

BOD is activated by setting the **pppExtIflBodMode** variable to *BOD-active* or *BOD-passive*, depending on which side should actively switch on and bear the costs. The maximum number of B-channels to be dynamically switched corresponds to the value of the variable **biboPPPMaxConn** of the **biboPPPTable**; this is configured in Setup Tool under **Maximum Number of Dialup Channels**.

#### ■ Switching on of B-channels:

If the **pppExtIflLoad** corresponds to the value 90 (%) or more for at least 5 seconds, a B-channel is switched on.

#### ■ Switching off of a B-channel:

The current value of **pppExtIflLoad** does not serve as the basis for switching off, the calculated (fictitious) bundle load after switching off of a B-channel does. For example, the fifth dialup line is switched off if the remaining four lines in the bundle would have a load of less than 80% for 10 seconds. There are three mechanisms for deciding when a dialup connection is switched off. The first is fixed and is a precondition for the third to take effect, the second and third can be configured separately.

- If this value drops below 80 (%) for at least 10 seconds, a B-channel is switched off.
- Static Short Hold: terminates all BOD/backup links after expiry of the inactivity timeout configured. Static Short Hold always takes priority over the load utilization calculation. If, for example, static Short Hold is set to 2 seconds and there is no more data exchange on a channel bundle, the dialup line is terminated after the two seconds and not after the 10 seconds of number 1.

- Dynamic Short Hold: if the **PPPTable** is correspondingly configured and AOCD (advice of charging during the call) is available, a B-channel is switched off just shortly before the beginning of the next charging unit, provided that the terms of number 1 are fulfilled, i.e. the current capacity utilization is less than 80% for 10 seconds.

## X.21 leased lines

The setting for **X.21IfLeads** can have a significant bearing on costs incurred and is thus worthy of some attention. When **IfLeads** is set to *enabled*, a switched backup connection is immediately initiated on the failing of an X.21 leased line. This can, however, lead to excessive and undesired dialup connections if, for example, a flickering leased line sends repeated signals to establish dialup connections. On the other hand, it provides a means of assuring the speedy transmission of data.

By setting **X.21IfLeads** to *disabled*, the backup connection is only established after a period of time set in **biboPPPTimeOut**. This is set to 10 x 3000 milliseconds which is equal to 30 seconds by default. You can thus be sure that due to an unsteady leased line, a series of unwanted dialup connections is not established, and that a backup connection is only made when the leased line has been down for a set time.

A tabular representation of the remaining variables in the **biboPPPTable** and their relevance for leased with BOD/backup lines.

Variable	Leased with BOD/ BACKUP
<b>Encapsulation</b>	only ppp, x75_ppp, x75btx_ppp
<b>Timeout</b>	Supported
<b>IpAddress</b>	Not supported
<b>RetryTime</b>	Not supported
<b>BlockTime</b>	Supported
<b>MaxRetries</b>	Supported
<b>ShortHold</b>	Supported
<b>InitConn</b>	Not supported
<b>MaxConn</b>	Supported
<b>MinConn</b>	Not supported
<b>CallBack</b>	Not supported
<b>Layer1Protocol</b>	Supported
<b>LoginString</b>	Not supported
<b>VJHeaderComp</b>	Supported
<b>Layer2Mode</b>	Not supported
<b>DynShortHold</b>	Supported

Table 2-8: **biboPPPTable**

## 2.5 VPN and NAT

A typical application of VPN (Virtual Private Networks) with PPTP (Point-to-Point Tunneling Protocol) consists of using the Internet to make a connection to the headquarters. To do this, clients establishing those links use a connection to a local ISP (Internet Service Provider) with dynamic IP address assignment or static IP address. The **BRICK** establishes the VPN tunnel, the ISP is not involved. These constellations are called symmetric PPTP, the **BRICK** combines the functions of PAC (PPTP Access Concentrator) and PNS (PPTP Network Server).

If the client wants to use the connection to the ISP not only for establishing a VPN connection to the headquarters, but also for using other services of the Internet, NAT (Network Address Translation) has to be activated on the client **BRICK**. Then all client PCs connected to the client **BRICK** appear in the Internet with the same IP address.

Up to now BinTec's NAT implementation has supported connections with the protocols ICMP, TCP and UDP, but not with GRE (Generic Routing Encapsulation). All VPN connections using the protocol GRE for transport, e. g. PPTP and L2TP (Layer 2 Tunneling Protocol) could not be switched through a BinTec router when NAT was activated on the WAN interface.

With Release 5.1.1 BinTec's NAT implementation allows forwarding GRE packets to a specified endpoint. So it is possible now to establish VPN connections even with NAT.

This description is based on the example VPN LAN-LAN configuration from the **Extended Feature Reference**, which can be retrieved from BinTec's WWW Server at <http://www.bintec.de> (Section: Download). In this Release Note the required additional configuration steps, when activating NAT on the WAN interface, are explained. The following points will be covered:

- What could a typical constellation look like?
- What's new with Release 5.1.1?
- What additional configuration steps are required?

## 2.5.1 Constellation

The following scenario displays a LAN-LAN connection using a VPN tunnel between two partners (CentralSite and SupplierNet):

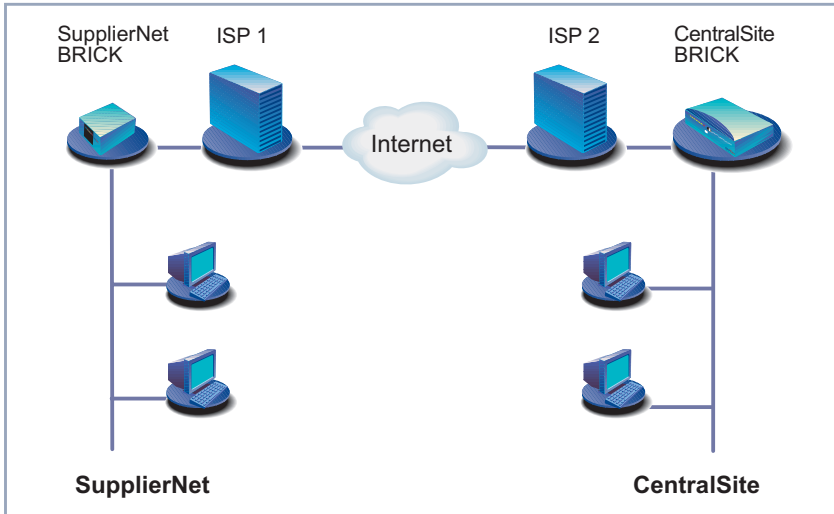


Figure 2-2: LAN-LAN connection using a VPN tunnel

Establishing and using a VPN connection with PPTP (see [figure 2-3, page 39](#) below) requires two protocols between the two tunnel endpoints – TCP (over PPTP) and GRE (over IP):

1. A TCP connection to establish the tunnel (PPTP call control):  
In our example SupplierNet opens the TCP connection to the CentralSite (destination port 1723) to establish a PPTP connection.
2. A GRE session to use the tunnel as a transport medium:  
After establishing the tunnel, SupplierNet can use the GRE session to exchange data with the CentralSite (PPP packets are encapsulated by GRE headers). If NAT is activated on the VPN interface of SupplierNet, the connection can't be realized because GRE packets from CentralSite can't be switched through the NAT firewall of SupplierNet. So the VPN connection fails.

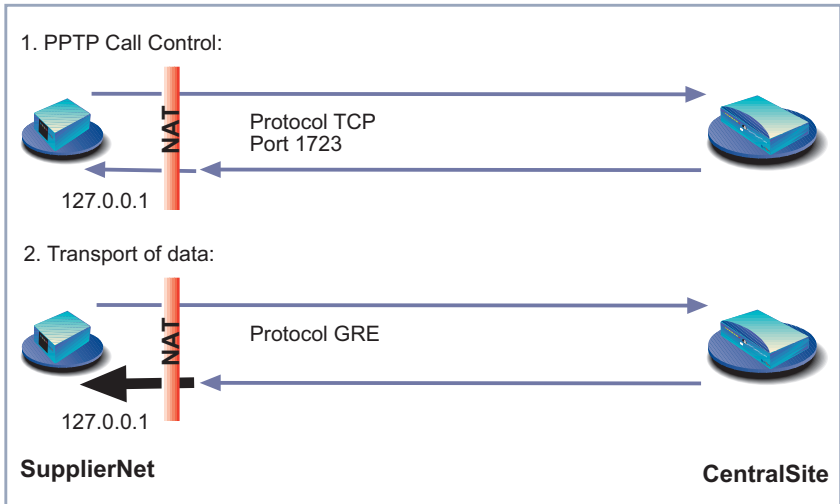


Figure 2-3: Establishing and using a VPN tunnel with PPTP (the changes in Release 5.1.1 allow incoming GRE packets to switch through the NAT firewall)

## 2.5.2 What's new?

BinTec Communications AG offers the following improvements to enable VPN connections using NAT:

### Setup Tool

The range of values **Protocol** can receive in the menu **IP ► NETWORK ADDRESS TRANSLATION ► RETURN ► ADD** has been extended with the value *gre* as protocol ID for the protocol GRE. In addition, the values *ah*, *esp* and *l2tp* have been introduced as protocol IDs for Authentication Header, Encapsulated Security Payload and Layer Two Tunneling Protocol respectively.

BRICK	BinTec Communications AG
[IP][NAT][CONFIG][EDIT]:NAT Configuration (headquarters)	MyBinGO!
Service	user defined
Protocol	gre
Port (-1 for any)	-1
Destination	127.0.0.1
SAVE	CANCEL
Use <Space> to select	

Now the following values are available for **Protocol**:

Field	Meaning
<b>Protocol</b>	Protocol to allow. Possible values: <i>icmp, tcp, udp, esp, ah, l2tp, gre.</i>

Table 2-9: **IP** ► **NETWORK ADDRESS TRANSLATION** ► **RETURN** ► **ADD**

## MIB variables

The range of values of the MIB variables **ipNatProtocol** and **ipNatPrProtocol** in the **IpNatTable** and **IpNatPresetTable** respectively has been extended with the value *gre* as protocol ID for GRE. In addition, the values *ah*, *esp* and *l2tp* have been introduced as protocol IDs for Authentication Header, Encapsulated Security Payload and Layer Two Tunneling Protocol respectively.



The following values are available now:

Variable	Meaning
<b>ipNatProtocol</b>	Specifies the protocol the session is using. Possible values: <i>udp, tcp, icmp, ospf, esp, ah, l2tp, gre.</i>

Table 2-10: **IpNatTable**

Variable	Meaning
<b>ipNatPrProtocol</b>	Specifies the protocol for which the table entry shall be valid. Possible values: <i>udp, tcp, icmp, ospf, delete, esp, ah, l2tp, gre.</i>

Table 2-11: **IpNatPresetTable**

### 2.5.3 Configuration

The configuration of NAT for a VPN connection can be done

- via Setup Tool
- via MIB variables

In this Release Note the configuration is described via Setup Tool.



For the configuration of the VPN connection ([figure 2-2, page 38](#)), see **Extended Features Reference**.

#### Client with dynamic IP address assignment

If the client, i. e. SupplierNet, gets its IP address dynamically assigned by its ISP, the establishing of the VPN connection can only be done by SupplierNet, not by CentralSite.



CentralSite has to have a fixed IP address access to the Internet to enable SupplierNet to establish a VPN connection to the CentralSite.

To configure the client **BRICK**, proceed as follows:

- Go to **IP** ➤ **NETWORK ADDRESS TRANSLATION**
- Select the interface to be configured for NAT (i. e. the interface to the ISP) and press **Return**
- Select **Network Address Translation: on**
- Press **ADD**
- Select **Service: user defined**
- Select **Protocol: gre**
- Enter **Port (-1 for any): -1**
- Enter **Destination: 127.0.0.1**
- Press **SAVE**

### Client with static IP address

If the client, i. e. SupplierNet, has a static IP address, the VPN connection can be established by both sites, SupplierNet or CentralSite.



Both CentralSite and SupplierNet have to have a fixed IP address access to the Internet to enable VPN connections to be established in both directions.

To configure the client **BRICK**, proceed as follows:

- Go to **IP** ➤ **NETWORK ADDRESS TRANSLATION**
- Select the interface to be configured for NAT (i. e. the interface to the ISP) and press **Return**

- Select **Network Address Translation**: *on*
- Press **ADD**
- Select **Service**: *user defined*
- Select **Protocol**: *gre*
- Enter **Port (-1 for any)**: *-1*
- Enter **Destination**: *127.0.0.1*
- Press **SAVE**
- Press **ADD**
- Select **Service**: *user defined*
- Select **Protocol**: *tcp*
- Enter **Port (-1 for any)**: *1723*
- Enter **Destination**: *127.0.0.1*
- Press **SAVE**

### Central Site with static IP address

To configure the CentralSite **BRICK**, proceed as follows:

- Go to **IP** ➤ **NETWORK ADDRESS TRANSLATION**
- Select the interface to be configured for NAT (i. e. the interface to the ISP) and press **Return**
- Select **Network Address Translation**: *on*
- Press **ADD**
- Select **Service**: *user defined*
- Select **Protocol**: *gre*
- Enter **Port (-1 for any)**: *-1*
- Enter **Destination**: *127.0.0.1*
- Press **SAVE**

- Press **ADD**
- Select **Service**: *user defined*
- Select **Protocol**: *tcp*
- Enter **Port (-1 for any)**: *1723*
- Enter **Destination**: *127.0.0.1*
- Press **SAVE**



127.0.0.1 is the loopback address. It is entered as **IntAddr** or as **Destination** because the **BRICK** itself is an endpoint of the VPN tunnel.



When configuring a VPN connection over a dialup connection it's recommended to set Short Hold for the VPN connection with a shorter time interval than the Short Hold for the underlying dialup connection. Otherwise, unnecessary connections could be established because of termination of the VPN connection.

## Testing the configuration

To test the VPN connection, e. g. with the `ping` command:

- do it from a host in your LAN to a host in the partner LAN or
- if you want to test from a **BRICK** to a partner **BRICK**, enter the **BRICK**'s LAN IP address as **Unique Source IP Address** in Setup Tool menu **IP** ➤ **STATIC SETTINGS** before testing. Otherwise, the **BRICK** will put the IP address of the WAN interface as source address into the ping packets originated by the **BRICK** and the consequence is that outgoing packets to the VPN partner are sent through the tunnel, but can only be returned outside the tunnel (on the underlying WAN connection).

## 2.6 NetBIOS over NAT

In networks using Windows computers, several network functions such as domain registration, access to drives and printers of other computers are based on the NetBIOS protocol.

### WAN connections with NetBIOS over IP

NetBIOS was actually designed for use in LANs. NetBIOS addressing constraints make it impossible to split up a network into subnets with different locations and thereby establishing a hierarchical construction, for example.

In order to avail of the network services mentioned above over WANs, the NetBIOS packets are packed in IP packets, for example, (NBT or NetBIOS over TCP/IP). This can be activated for Windows computers under **Start ▶ Settings ▶ Control Panel ▶ Network ▶ Protocols ▶ Properties** where TCP/IP is installed.

Once packed in IP packets, NetBIOS packets can also be sent to destinations over routers and WAN connections. In this way, hierarchies are formed.

### Heavy traffic loads with NetBIOS over IP

The amount of data traffic between two computers or applications connected by NetBIOS can often be unexpectedly heavy. Frequently, data exchange can take place even when no activity is apparent. For "on demand" WAN connections for which costs are charged, even in local networks as is usual in Europe, the switching of NetBIOS over IP involves an element of risk in terms of costs.

### The reduction of traffic

In order to reduce traffic between locations, Microsoft recommends a concept by which a domain controller is used at each location (Windows NT server configured as primary and backup domain controller). This already reduces traffic levels.

In addition, on the support side, Microsoft provides a number of tuning measures (Microsoft Knowledgebase) which help to reduce traffic levels even further. To explain these changes (mostly registry changes), would exceed the scope of this document.

## **Network construction without an additional domain controller**

In many scenarios, e.g. teleworkers or smaller branch offices using their own router, a concept with several domain controllers is inappropriate due to the increased financial and administrative costs involved.

The construction of such networks without the use of domain controllers was already possible using BinTec routers, provided all computers, including those on the central side, had different network addresses.

## **Establishing a network with NAT**

Release 5.1.1 now allows that remote BinTec routers can be configured with NAT for WAN connections with NetBIOS over IP. The BRICK thus independently manipulates not only the IP packets themselves, but also the NetBIOS packets contained within them, enabling domain registration at the central side and access to central computers, printers and drives.

The use of NAT simplifies routing to the central side as each location is represented by just the one IP address. As the illustration shows, packets returning

from the WAN partner are sent to all computers in the LAN with a subnet broadcast address.

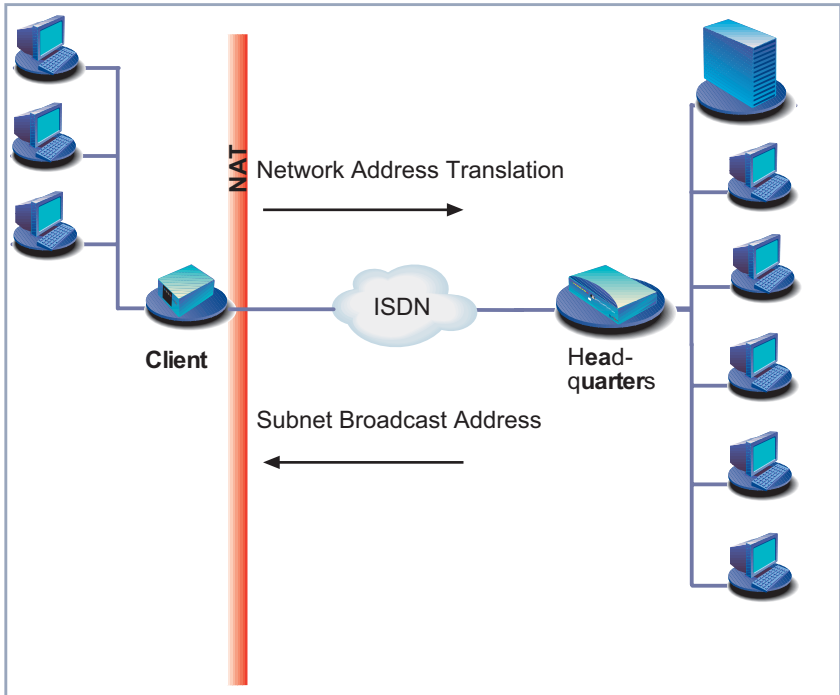


Figure 2-4: NetBIOS over NAT

### Prerequisite – Switching Access Lists

If the resources of a central side are to be accessed over WAN links and remote access servers, all routers involved must be configured to route NetBIOS over IP traffic (TCP and UDP packets from and to ports 137 to 139). This is frequently prevented by access lists or packet filters.



### Caution!

By the switching of NetBIOS over IP, unexpectedly high connection costs can be incurred on WAN links. The real volume depends on the applications and services used. Consequently, the costs of the connections should be regularly monitored (in the beginning daily). To guard against such unintentional costs, you can use the Credits Based Accounting System feature which is available with all BinTec routers and with which connections and costs can be limited.

## Activating NAT

In order to activate NAT, proceed as follows:

- Go to **IP** ➤ **NETWORK ADDRESS TRANSLATION**

```

BRICK Setup Tool                                     BinTec Communications AG
[IP][NAT]: NAT Configuration                         MyBinGO!

Select IP Interface to be configured for NAT

HQ
en1
en1-snap

EXIT

press <Ctrl-n>, <Ctrl-p> to scroll, <Return> to edit/select

```

- Mark the interface or the WAN partner for which you want to activate NAT (e.g. HQ) and press **Return**.
- Another menu window opens:



BRICK Setup Tool	BinTec Communications AG			
[IP][NAT][CONFIG]: NAT Configuration (HQ)	MyBinGO!			
Network Address Translation on				
Configuration for sessions requested from outside				
Service	Destination	Source Dep.	Dest.Dep.	Port Remap
ADD	DELETE	SAVE	CANCEL	
Use <Space> to select				

Make the following entries:

- Select Network Address Translation: **on**.
- Press **SAVE**.  
Network Address Translation is activated for the selected interface or WAN partner.

Now on routing, all source IP addresses in the LAN are replaced by this address. The NAT address is assigned to the BRICK by IPCP from the WAN partner. The client PC appears on the WINS server on the central side in the WINS databank under this address.

### Entering a subnet broadcast address

Essentially, there are three TCP/UDP ports involved in the process of domain registration over NAT: 137, 138 and 139. UDP port 138 is of special interest. Here an additional entry in the **ipNatPresetTable** is essential for NetBIOS over NAT to function properly. The reason is this. According to Microsoft's implementation, the source and destination ports of these packets destined for the domain controller are always port 138. This means that it is not possible to change and link the source port number with the client PC's IP address, thus specifying the PC to which the packet should be sent back within the LAN. The domain controller will always return the packet over the port number 138. The

solution to this is simply to enter a subnet broadcast address under **Destination** so that all PCs in the LAN receive the packets. This can also be done over Setup Tool in the menu **IP** ➤ **NETWORK ADDRESS TRANSLATION** ➤ **ADD**:

BRICKSetup Tool		BinTec Communications AG	
[IP][NAT][CONFIG][ADD]: NAT Configuration		MyBinGO!	
Service	user defined		
Protocol	udp		
Port (-1 for any)	138		
Destination	172.16.98.255 (e.g. a broadcast address)		
SAVE	CANCEL		
Use <Space> to select			

Finally, actual domain registration and access to the external resources in the **Network Neighbourhood** take place over the NetBIOS session service over port 139. For each of these TCP/IP connections an entry is automatically made in the **ipNatTable**.

Example:

```
inx  IfIndex(*ro)  protocol(*ro)  IntAddr(*ro)  IntPort(*ro)
      ExtAddr(ro)  ExtPort(ro)    RemoteAddr(ro) RemotePort(ro)
      Direction(ro) Age(ro)

00   10001         tcp            172.16.100.99 687
      172.16.200.20 1023          172.16.201.10 139
      outgoing     50
```

## Determining a subnet broadcast address



If you want to save yourself the trouble or time of calculating the broadcast address yourself, you can use a subnet calculator tool like the one you can find at this address:

<http://www.cci.com/tools/subcalc/index.html>

In order to determine the broadcast address, you need to know the IP address of the **BRICK** and the subnet mask. It is then necessary to identify which portion of the IP address is the host number. Each IP address consists of a network por-

tion that identifies the network number and a host portion that identifies the host's number on that network. The dividing line between the two portions of the address depends on the network "Class" the address belongs to. We can pinpoint this dividing line for all classes, however, by examining the bit values in the netmask as follows:

3. If the bit in the mask is ON (=1), the respective bit in the IP address belongs to the network portion.
4. If the bit in the mask is OFF (=0), the respective bit in the IP address belongs to the host portion.

### Example 1

**Class B: IP address 128.66.12.1, mask 255.255.255.0, subnet broadcast address 128.66.12.255.**

Here is an example of a class B subnet mask. In a standard Class B netmask, the last two bytes identify the host portion of the IP address; in the case of this subnet mask, all eight bits of the third byte define the subnet part of the address, while all eight bits of the fourth byte correspond to the host portion:

In this case, the first three bytes identify the network, including subnets, and the last byte identifies the host. Consequently, the host number to use below is 1.

Address	(dec.):128.	66.	12.	1
	(bin.):1000 0000	0100 0010	0000 1100	0000 0001
SubNetmask	(dec.):255	255	255	0
	(bin.):1111 1111	1111 1111	1111 1111	0000 0000

### Example 2

**Class C: IP address 192.178.16.66, mask 255.255.255.192, subnet broadcast address 192.178.16.66.127.**

Next, an example of a subnet netmask from Class C. In a standard netmask, the last byte indicates the host portion of the IP address; in this case, the first two (or high-order) bits of the fourth byte (11) define the subnet part of the ad-

dress, and the last six bits of that same byte (00 0000) correspond to the host portion.

The host number to use below is 66:

Address	(dec.):192.	178.	16.	66
	(bin.):1100 0000	1010 1010	0001 0000	0100 0010
Subnetmask	(dec.):255	255	255	192
	(bin.):11111111	11111111	11111111	1100 0000

- Convert the host number (IP address) from decimal to binary. To do this, you can use a calculator tool such as the one supplied with Windows NT: Click the Windows **Start** button and point to **Programs** ➤ **Accessories**.
- Convert the corresponding bytes of the subnet mask from decimal to binary.
- Combine the binary subnet mask and the host number as follows:
  - If the subnet mask bit is 1 and the host number bit is 0, place a 0 in that position.
  - If the subnet mask bit is 1 and the host number bit is 1, place a 1 in that position.
  - If the subnet mask bit is 0, place a 1 in that position.
- Convert the resulting binary number back to its decimal equivalent.
- Join the decimal number you have just determined with the network number.

Figure 2-5 is an illustration of the sequence of commands leading to the calculation of a subnet broadcast address outlined above.

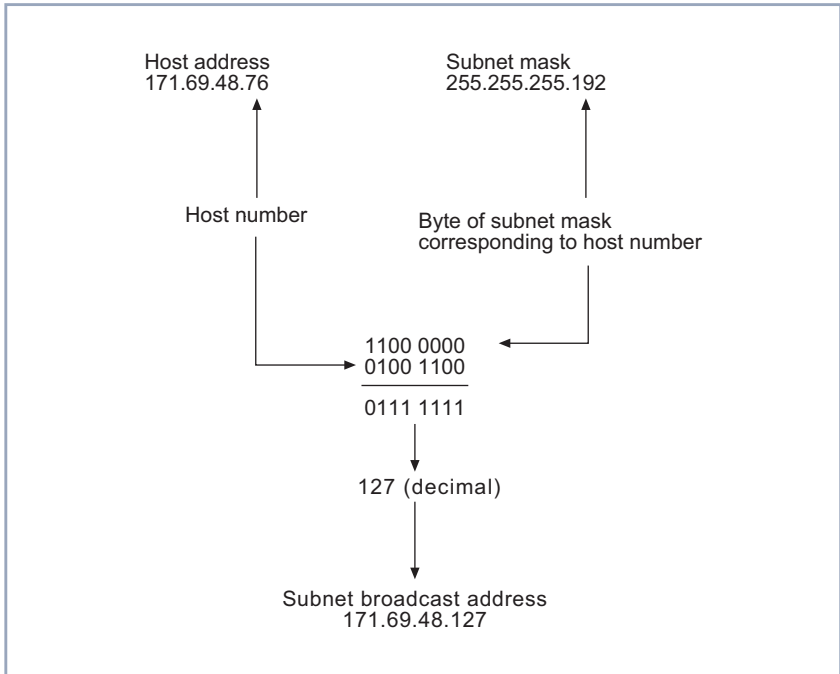


Figure 2-5: Determining a subnet broadcast address

Here are some more examples of IP addresses, standard and subnet masks and their corresponding broadcast addresses from classes A, B and C.

Class	IP Address	Standard / subnet mask	Broadcast Address
A	18.20.16.91	255.0.0.0	18.255.255.255
A (subnet)	18.20.16.91	255.255.0.0	18.20.255.255
B	171.69.48.18	255.255.0.0	171.69.255.255
B (subnet)	171.69.48.18	255.255.255.248	171.69.48.23
C	192.178.16.66	255.255.255.0	192.178.16.255
C (subnet)	192.178.16.66	255.255.255.192	192.178.16.127

Table 2-12: Three classes of IP addresses and broadcast addresses

## Bidirectional access

After domain registration has been successfully negotiated, the PDC (Primary Domain Controller) in turn tries periodically to establish a TCP connection with the client over port 139. These connection attempts should normally fail if no additional entry is made in the **ipNatPresetTable**. Thus, only one-way access is configured from the client to the resources of the central network.

You may, however, want to permit bidirectional access (and the costs that might involve). This permission can be given in Setup Tool by adding the **Destination**

of the IP address of the client PC in **IP** ➤ **NETWORK ADDRESS TRANSLATION** ➤ **ADD:**

BRICKSetup Tool	BinTec Communications AG
[IP][NAT][CONFIG][ADD]: NAT Configuration	MyBinGO!
Service	user defined
Protocol	tcp
Port (-1 for any)	139
Destination	172.16.100.99 (IP address of client PC)
Use <Space> to select	

## 2.7 NetBIOS Node Type by DHCP

Up to now the only way to define the NetBIOS node type was to set it directly in the registry under Windows 95/98/NT, now, however, configuration (via DHCP) on the BRICK is possible. The **ipDhcpTable** has been extended by the **ipDhcpNodeType** variable. This enables a NetBIOS node type to be set for one IP address pool, making it applicable for all of the DHCP clients.

### Methods of name resolution

Basically, the node type defines the way in which Windows has names resolved into their corresponding IP addresses. Each node type contains various methods of name resolution. The following are the methods of name resolution contained in the different node types.

### Methods of name resolution

#### ■ Broadcast resolution

This is a means within a LAN by which the owner of a NetBIOS name is requested directly for his IP address.

■ WINS (Windows Internet Name Service)

A server is configured as a NetBIOS databank containing lists of NetBIOS names of clients registered with the server.

■ LMHOSTS

This is a file on the Windows client which contains lists of NetBIOS names and their corresponding IP addresses.

### NetBIOS node types

The following node types employ some or all of the above means of name resolution, though arranging and employing them in different sequences. The most appropriate node types for name resolution by a WAN partner are either the P or M-Nodes; default is none or **not specified** in SetupTool:

■ B-Node (**Broadcast Node**)

1. Broadcast resolution
2. LMHOSTS or Domain Name Service (DNS) if configured

■ P-Node (**Point-to-Point Node**)

1. WINS
2. LMHOSTS or Domain Name Service (DNS) if configured

■ M-Node (**Mixed Node**)

1. Broadcast resolution
2. WINS
3. LMHOSTS or Domain Name Service (DNS) if configured

■ H-Node (**Hybrid Node**)

1. WINS
2. Broadcast resolution
3. LMHOSTS or Domain Name Service (DNS) if configured



## Setup Tool

This setting can also be conveniently configured over Setup Tool in the menu **IP ► DHCP ► ADD**. The menu looks like this:

BRICKSetup Tool	BinTec Communications AG
[IP][DHCP][ADD]: Add Range of IP Addresses	MyBinGO!
Interface	en1
IP Address	172.16.100.50
Number of consecutive addresses	50
Lease Time (Minutes)	300
MAC Address	0060B283D02F
NetBT Node Type	Point-to-Point Node
	SAVE CANCEL
Use <Space> to select	

## 2.8 MS-Callback Termination Option

When callback is configured on a BRICK for a Windows 95/98/NT client, normally the procedure is that you dial in to the central-side BRICK, a window opens in which you enter the dial number of the terminal from which you are presently calling, the original call is disconnected and callback is initiated, i.e. your headquarters calls you back and bears the charges. It is also possible for the administrator at your head office to configure the telephone number from which you regularly require the callback function, in which case you need only confirm the callback mode without entering your telephone number.

If, however, you want to retain the existing connection to your head office without initiating callback, if you do not know the number of the phone you are calling from or you cannot be called back (if the necessary authentication, dialing code or extension are not available, for example), a newly implemented feature to terminate the callback function is available.

## Configuration

It is now possible to give the Windows client the option to demand a callback or to access the head office by the initial connection.

- Configure the central-side BRICK by setting the **biboPPPCallback** variable to *callback\_optional* in the **biboPPPTable**. This has the effect that the following options are now available to the Windows client.

## Application

### ■ Windows 95/98 Clients:

- for callback numbers to be specified by the caller (user-defined number):  
A window appears in which the caller can select either **OK**, to enter a number to be called back or **CANCEL**, to retain the existing connection.
- for callback numbers predefined by the central-side administrator (administrator-defined number):  
A window appears requesting the user to either confirm the callback mode with **OK**, or to retain the existing connection by clicking **CANCEL**.

### ■ Windows NT clients:

- for callback numbers to be specified by the caller:  
A window appears in which the caller can select either **OK**, to enter a number to be called back or **CANCEL**, to retain the existing connection.
- for callback numbers predefined by the central-side administrator:  
In this case, no Window appears and the callback termination option can not be availed of.

## 2.9 Optional Retrain for Modem Connections

Many of the problems concerning modem connections are caused by poor or frequently changing line quality. When a line between a modem and a BRICK (from a client to an ISP, for example) is recognized as being of such poor quality, the line can sometimes be terminated.

The new options now available to BRICK users are to enable or disable an automatic retrain or to enable fallback/fall forward. Configuration is performed over **mdmProfileRetrain**, a new variable in the **mdmProfileTable**. The following values are available:

Value	Meaning
<i>retrain</i>	Enables line-quality monitoring and auto-retrain: the modem controls the line quality and requests a retrain if required (no data transfer can take place during retrain).
<i>off</i>	Disables line-quality monitoring and auto-retrain: the modem neither controls the line quality nor requests a retrain.
<i>fallback</i>	Enables line-quality monitoring and fallback/fall forward: the modem controls the line quality and falls back when the line quality is insufficient (a rate renegotiation to a lower speed) and falls forward when the line quality is sufficient (a rate renegotiation to a higher speed within the current modulation speeds). This is also the default value.

Table 2-13: **mdmProfileRetrain**

## 2.10 RADIUS for Dial-Out

### 2.10.1 Introduction

As the name suggests (Remote Authentication Dial-In User Service), RADIUS was designed as a client-server system for authenticating dial-in connections. The BRICK can be configured to operate as a RADIUS client that consults the RADIUS server at connection time for the authentication and identification of specified dial-in partners.

It is now possible, however, for the BRICK to request user data from the server in order to establish a connection also for outgoing calls.

#### Why RADIUS for dial-out

The principal objectives that lay behind the implementation of this new feature are two-fold:

- Firstly, in view of the fact that at most 500 WAN partners can be configured on the BRICK and some installations can greatly exceed this figure, this feature provides an alternative to configuring WAN partners on the router. The entries for WAN partners are no longer made locally on the BRICK via Setup Tool, but now on the RADIUS server. There can thus be considerable savings in terms of Flash memory.
- Secondly, RADIUS for dial-out is easier to manage in terms of configuration. The many entries over Setup Tool are replaced by the more convenient administration of the RADIUS server over the usual editor tools.

#### How does it work?

Firstly, the BRICK is configured to request data from the server. Then all the information required for the establishment of a PPP connection is configured in the database of the RADIUS server.

The BRICK firstly requests all the routing information from the RADIUS server and stores it in the **ipRouteTable**. Loading of this initial information is driven over the **RadiusSrvDialout** variable. On the one hand, the variable can be set to *enabled* and then saved with the configuration so that initial loading occurs immediately after every reboot. Alternatively, by setting to *reload*, it is possible to load or reload the routing information at any time you choose.

When a dial-out call to a WAN partner is to be made on one of these loaded routes, another request is sent to the RADIUS server in order to receive the necessary partner-specific information (e.g. data for the authentication, encapsulation, extension number etc.), each partner can have more than just one entry in the **ipRouteTable**. If the partner is configured on the server, the necessary information entries are transferred to the BRICK and generated in the respective MIB tables for the duration of the call.

After the end of the call, all entries on the BRICK's MIB tables are deleted with the exception of the routing information in the **ipRouteTable**, which is loaded initially.

## Configuration

Configuration of RADIUS for dial-out takes place on two levels:

- Configuration on the BRICK side: entries are made over the **RadiusServerTable**.
- Configuration on the RADIUS server: configuration on the "users" file in the corresponding directory on the RADIUS server.

### 2.10.2 Configuration on the BRICK

Configuration on the BRICK is made over the **RadiusServerTable**. The following basic settings are required for dial-out and important for the initiation of the

dialog between BRICK and server so that the necessary routing and partner-specific information is transferred:

Variable	Meaning
<b>RadiusSrvProtocol</b>	In order to configure RADIUS authentication, leave the value <i>authentication</i> .
<b>RadiusSrvAddress</b>	The IP address of the RADIUS server.
<b>RadiusSrvPort</b>	RFC 2138 assigns port 1812 and 1813 for authentication and accounting respectively. Many RADIUS servers, including Merit, still use 1645 and 1646. As RADIUS servers use different port numbers, you should refer to the documentation for the RADIUS server you are using.
<b>RadiusSrvSecret</b>	This is a shared secret between the RADIUS server and the BRICK.
<b>RadiusSrvDialout</b>	This option provides the means for RADIUS dial-out configuration. The possible values are <i>enabled</i> , <i>disabled</i> or <i>reload</i> .
<b>RadiusSrvDefaultPW</b>	Is not required with certain RADIUS implementations, such as Merit, here again you should consult the documentation for your RADIUS server. Some RADIUS servers rely on a configured user or CHAP password for any RADIUS request.

Table 2-14: **RadiusServerTable**

Here are examples of three different entries in the **RadiusServerTable**:

inx	Protocol(*rw)	Address(rw)	Port(rw)	Secret(rw)
	Priority(rw)	Timeout(rw)	Retries(rw)	State(-rw)
	Policy(rw)	Validate(rw)	Dialout(rw)	DefaultPW(rw)
00	authentication	172.16.70.14	1645	secret
	0	1000	5	active
	authoritative	enabled	enabled	
01	authentication	172.16.70.93	1645	secret
	1	1000	5	active
	authoritative	enabled	enabled	
02	accounting	172.16.70.98	1646	secret
	2	1000	5	active
	authoritative	enabled	enabled	

## What happens on the BRICK?

According to the example above, once a dial-out request is made that is to be sent on one of the routes loaded from the RADIUS server and thus occupying an **Index** above 30000, the RADIUS server with the IP address 172.16.70.14 receives a request, as this entry has the lowest **RadiusServerPriority** setting.

## Backup

If this server does not reply after 5 attempts (**RadiusSrvRetries**), each after an interval (**RadiusSrvTimeout**) of 1000 seconds, the **RadiusSrvState** is set to *inactive*. The server with the next lowest priority setting, in this case the server with the IP address 172.16.70.93, then receives a request from the BRICK. If this server responds to the BRICK request, the partner-specific information for an outgoing call to a WAN partner can be loaded from the RADIUS server to the corresponding MIB tables on the BRICK.

### 2.10.3 Configuration on the RADIUS server

(The following description is taken from the RADIUS implementation for Merit.) The second part of the configuration deals with telling the "users" file on the RA-

DIUS server firstly the routing information required for the WAN partner and secondly the partner-specific information assigned to each routing entry. A significant advantage of the implementation from BinTec Communications AG is that only one entry in the "users" file is sufficient to enable both dial-in as well as dial-out.

Finally, it is necessary that the BinTec-specific extensions are included in the dictionary file of the server.

### **IP routing**

The first part deals with defining the necessary IP routing information. Here the following syntax should be obeyed:



```
Framed-Route = destaddr/mask gateway userid userpw private metric
```

Routing info	Meaning
destaddr/mask	Destination address with netmask, required for the dial-out request.
gateway	Gateway address (nexthop) (optional).
userid	The partner's user ID, necessary for the dial-out request.
userpw	This password must match the password attribute in the "users file", see <a href="#">Examples of Framed-Routes and their corresponding partner-specific entries in the "users file", page 72</a> below. You need only make the one entry for both dial-in and dial-out. It may not consist only of digits.
private	Selection of the routing protocols, RIP, OSPF, or the PROXYARP used for the propagation of this IP route (optional).
metric1 - 5	Sets the variables metric1 to metric5 in the <b>ipRouteTable</b> ; metric1 should always lie above the value for the dial-in case, i.e. the worse metric. If no metric is given, metric1 is set to 5, while metric2 to metric5 are set to 0 (optional).

Table 2-15: "users file" of the RADIUS server

If only dial-out (without Callback) is being configured, `destaddr` and `userid` are the minimum entries required.

Several of these "routes" are then compiled and arranged under a fictitious user "dialout-X", which begins with the number 1. The number of entries under one of these dummy-users is restricted to the UDP limit of 4096 bytes. Whereby the optimum numbers in terms of loading times and system utilization lie at around 20-40 entries inside the "Framed-Route" record. On initial loading, the BRICK

asks for a user by the name of **dialout1**, then **dialout 2** and so on. Here is an example of what a dummy user could look like:

dialout-1

```
Framed-Route = "1.2.1.1 user1 secret1 3",
Framed-Route = "1.2.1.2 user2 secret2 3",
Framed-Route = "1.2.2.0/24 network1 secret3 3",
Framed-Route = "1.2.1.3 user3 secret OSPF 5",
Framed-Route = "1.2.1.4 user4 secret OSPF 5",
Framed-Route = "1.2.1.5 user5 more_secret RIP 5",
Framed-Route = "1.2.1.6 user6 secret6 RIP6",
Framed-Route = "1.2.1.7 user7 secret7 RIP 7",
Framed-Route = "1.2.1.8 user8 secret8 RIP8",
Framed-Route = "1.2.1.9 user9 secret9 RIP9",
Framed-Route = "1.3.1.0/24 network10 passwdnetwork10 10",
Framed-Route = "1.3.2.0/24 network11 passwdnetwork11 11",
Framed-Route = "1.3.3.0/24 network12 passwdnetwork12 12",
Framed-Route = "1.3.4.0/24 network13 passwdnetwork13 13",
Framed-Route = "1.3.5.0/24 network14 passwdnetwork14 14",
Framed-Route = "1.4.6.0/24 network15 passwdnetwork15 OSPF 15",
Framed-Route = "1.4.2.0/24 network16 passwdnetwork16 OSPF 16",
Framed-Route = "1.4.2.0/24 network17 passwdnetwork17 OSPF 17",
Framed-Route = "1.4.2.0/24 network18 passwdnetwork18 18",
Framed-Route = "1.4.2.0/24 network19 passwdnetwork19 RIP 19",
Framed-Route = "1.5.1.0/24 network20 passwdnetwork20 RIP 20",
```

dialout-2

```
.....
.....
```

dialout-3

```
.....
.....
```

## Specifying the BRICK to which the IP routing information should go

In the event that you have more than just one BRICK to which your IP routing information is to be transferred, it is possible to differentiate between the routers using the following syntax for the aforementioned dummy user, the following **sysName** variable is from the MIB II table **system**:

```
dialout-[sysName]-x
dialout-brick1-1
.....
.....
dialout-brick1-2
.....
.....
dialout-brick1-3
.....
.....
dialout-brick2-1
.....
.....
dialout-brick2-1
.....
.....
dialout-brick2-3
.....
.....
```

When the IP routing information is loaded to the BRICK (usually on booting when **RadiusSrvDialout** is set to *enabled*), the information is stored in the **ipRouteTable**. The indices for the as yet unused interfaces for these route entries extend from 30000. The **ipRouteTable** could look something like this:

inx	Dest(*rw)	Ifindex(rw)	Metric1(rw)	Metric2(rw)
	Metric3(rw)	Metric4(rw)	NextHop(rw)	Type(-rw)
	Proto(ro)	Age(rw)	Mask(rw)	Metric5(rw)
	Info			
03	1.2.1.1	30001	3	0
	0	1	0.0.0.0	indirect
	other	1538	255.255.255.25	0
	.0.0			
04	1.2.1.2	30002	3	0
	0	3	0.0.0.0	indirect
	other	1540	255.255.255.255	0
	.0.0			
05	1.2.2.0	30003	3	0
	0	3	0.0.0.0	indirect
	other	1540	255.255.255.255	0
	.0.0			

## Propagating dial-out IP routes via RIP

### Example

```
dialout-1
```

```
Framed-Route = destaddr/mask userid userpw RIP
```

For settings made in the **ipExtIfTable** on the BRICK and derived from the Bin-Tec-specific RADIUS attributes, the variable **RouteAnnounce** is rendered ineffectual.

In principle, this is possible but not advisable if there is a large number of IP routes.

## Propagating dial-out IP routes via OSPF

### Example

```
dialout-1
```

```
Framed-Route = destaddr/mask userid userpw OSPF
```

For settings made in the **ipExtIfTable** on the BRICK and derived from the Bin-Tec-specific RADIUS attributes, the variables **Ospf**, **RouteAnnounce** and

**OspfMetric** are rendered ineffectual. The dial-out IP routes are thus propagated with an OSPF metric calculated as follows:

$\text{IpMetric1} + 20$

## Dial-out IP routes and Proxy-ARP

### Example:

```
dialout-1
```

```
    Framed-Route = destaddr/mask userid userpw PROXYARP
```

For settings made in the **ipExtIfTable** on the BRICK and derived from the Bin-Tec-specific RADIUS attributes, the variable **ProxyArp** is rendered ineffectual.

## Entries in the "users" file

Now it is necessary to assign specific details about the partner to each IP route entry, again in the "users file" of the RADIUS server. Here it is possible that sev-

eral routes refer to just the one user entry. The minimum configuration entries must include the following:

Attribute	Meaning
<code>Service-Type = Framed</code>	This is the default value for PPP connections
<code>Framed-Protocol = PPP</code>	This is the type of encapsulation used. If not set PPP is used
<code>Framed-IP-Address = X . X . X . X</code>	This is the IP address of the WAN partner and must correspond to the destination address in the routing entry described above in Framed-Route
<code>Framed-IP-Netmask = Y . Y . Y . Y</code>	IP netmask, it could be something like <i>255.255.255.255</i>
<code>BinTec-biboDialTable = "direction=outgoing number=*****"</code>	A temporary entry for dial-out, including the phone number of the WAN partner, is made in the <b>biboDialTable</b>
<code>Password</code>	A user password that must match the password used in the Framed-Route (see <b>userpw</b> above).

Table 2-16: "users file" of the RADIUS server

**Caution!**

- ▶ Setting **direction** to *outgoing* is important for security reasons so that no incoming calls are authenticated over this entry.

The following attributes are optional:

Attribute	Meaning
Framed-MTU	Sets the <b>ifMtu</b> variable in the <b>IfTable</b>
Framed-Compression	Sets the <b>VJHeaderComp</b> variable of the <b>PPPTable</b> if necessary
Idle-Timeout	Sets the <b>ShortHold</b> variable in the <b>PPPTable</b>
Port-Limit	Sets the <b>MaxConn</b> variable in the <b>PPPTable</b>
BinTec-biboPPPTable = "biboPPPAuthentica- tion=pap/chap/ ms_chap"	The authentication protocol used for dial-out; if this is not explicitly specified, the authentication protocol CHAP is set.
BinTec-biboPPPTable = "biboPPPLocalI- dent=local_pppid"	This is the local ppp ID for authentication at the WAN partner's (optional) and the default setting

Table 2-17: Attributes in the "users file" of the RADIUS server

## Examples of Framed-Routes and their corresponding partner-specific entries in the "users file"

### Example 1:

```
dialout-1
  Framed-Route = "1.2.1.1 user1 topsecret3"

user1
  Password = topsecret3,
  Service-Type = Framed,
  Framed-Protocol = PPP,
  Framed-IP-Address = 1.2.1.1.
  Framed-IP-Netmask = 255.255.255.255,
  Idle-Timeout = 25,
  BinTec-biboPPPTable = "biboPPPAuthentication=chap",
  BinTec-biboPPPTable = "biboPPPLocalIdent=mylocalid",
  BinTec-biboDialTable = "direction=outgoing number=00815123456"
```

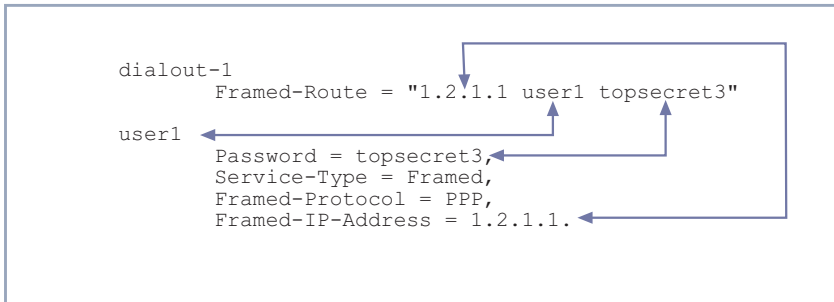


Figure 2-6: Matching Framed-Routes and partner-specific entries



**Example 2:**

```
dialout-1
  Framed-Route = "1.2.1.2 user2 mysecret2 3"

user2
  Password = "mysecret2",
  Service-Type = Framed,
  Framed-Protocol = PPP,
  Framed-IP-Address = 1.2.1.2.
  Framed-IP-Netmask = 255.255.255.255,
  Idle-Timeout = 30,
  BinTec-biboPPPTable = "biboPPPAuthentication=chap",
  BinTec-biboPPPTable = "biboPPPLocalIdent=mylocalid",
  BinTec-biboDialTable = "direction=outgoing number=00815123456"
```

For the purpose of clarification, the above examples place the Framed-Routes together with the partner-specific information. As shown above, user name, IP address and password are identical in the routing and partner-specific information included in each example. This is essential for RADIUS for dialout to function properly.

**BinTec-specific dictionary**

This dictionary is also a part of and can be retrieved from the RADIUS server directory, often the dictionary needs to be supplemented. Among information for other systems, it must contain BinTec-specific information, for example concerning the BinTec MIB tables. The inclusion in the dictionary of the attributes of these tables is then essential for the information written to the "users file" for both dial-in as well as dial-out and to be used by the RADIUS server. The following is a list of BinTec extensions for Merit:

**BinTec extensions**

VALUE	Framed-Protocol	X25-PLAIN	17825794
VALUE	Framed-Protocol	X25-PPP	17825795
VALUE	Framed-Protocol	IP-LAPB	17825796
VALUE	Framed-Protocol	IP-HDLC	17825797
VALUE	Framed-Protocol	MPR-LAPB	17825798
VALUE	Framed-Protocol	MPR-HDLC	17825799
VALUE	Framed-Protocol	FRAME-RELAY	17825800
VALUE	Framed-Protocol	X31-BCHAN	17825801
VALUE	Framed-Protocol	X75-PPP	17825802
VALUE	Framed-Protocol	X75BTX-PPP	17825803
VALUE	Framed-Protocol	X25-NOSIG	17825804
VALUE	Framed-Protocol	X25-PPP-OPT	17825805

BinTec.attr	BinTec-biboPPPTable	224	string(*, 0, NOENCAPS)
BinTec.attr	BinTec-biboDialTable	225	string(*, 0, NOENCAPS)
BinTec.attr	BinTec-ipExtIfTable	226	string(*, 0, NOENCAPS)
BinTec.attr	BinTec-ipRouteTable	227	string(*, 0, NOENCAPS)
BinTec.attr	BinTec-ipExtRtTable	228	string(*, 0, NOENCAPS)
BinTec.attr	BinTec-ipNatPresetTable	229	string(*, 0, NOENCAPS)
BinTec.attr	BinTec-ipxCircTable	230	string(*, 0, NOENCAPS)
BinTec.attr	BinTec-ripCircTable	231	string(*, 0, NOENCAPS)
BinTec.attr	BinTec-sapCircTable	232	string(*, 0, NOENCAPS)
BinTec.attr	BinTec-ipxStaticRouteTable	233	string(*, 0, NOENCAPS)
BinTec.attr	BinTec-ipxStaticServTable	234	string(*, 0, NOENCAPS)

## 3 Changes/Improvements

### 3.1 PPP

#### 3.1.1 Permanent Connection

The **PPPSHORTHOLD** variable in the **biboPPPTable** is the time in seconds which must elapse after no further data exchange occurs before the link is terminated.

By setting **PPPSHORTHOLD** to *-1*, however, it is now possible to set this variable in a way in which after termination of the link, a dial-up connection is automatically initiated and the link is reestablished. The current operational status of the interface, **ifOperStatus**, only takes the values *up* or *down*, no longer *dormant* or *blocked*. Configuration of this feature can only be made in the MIB table and not in Setup Tool.



#### Caution!

This immediate reestablishment of the link should be expressly wished as setting **PPPSHORTHOLD** to *-1* can obviously have considerable financial implications.

- ▶ If you wish to prevent constant reestablishment of a link, make sure to set **PPPSHORTHOLD** to a value other than *-1*.

### 3.2 ETHER

#### 3.2.1 Improved Autonegotiation for Fast Ethernet

Ethernet autonegotiation (IEEE 802.3) could have taken up to thirty seconds using some hubs or switches. Now this period of time has been reduced to a maximum of five seconds, so now the link is almost instantly available.

## 3.3 IP

### 3.3.1 No Longer Automatic IP Conversion

If you are updating from a software release equal to or older than 4.7.x to the current version, 5.1.1 or later, it is necessary to firstly upgrade to 4.9.3, save the configuration (cmd = save), then upgrade to 5.1.1. If you update directly from 4.7.x to 5.1.x, the old access lists (**ipAllowTable**, **ipDenyTable**) can not be automatically converted and are lost.

## 3.4 RADIUS

### 3.4.1 Additional RADIUS Attributes now Supported

The following RADIUS Attributes are being added , if available, and transferred on Authentication (Access-Request) or on Accounting Start/Stop.

RADIUS Attribute	Meaning
CLASS (Authentication (Access-Request) and Accounting)	This Attribute can be used for the synchronisation of RADIUS authentication and accounting. It is useful for a Steel-Belted RADIUS Server or another RADIUS implementation, for example, that has dynamically assigned an IP address from its pool. With the help of this Attribute, the corresponding IP address can be returned to the pool for the Accounting-Stop record. The RADIUS server can set the class attribute with the authentication response. The BRICK will return it with the accounting start and stop record.
CALLED-STATION-ID (Authentication only (Access-Request))	The Called Party Number is useful, for example, to allow certain user groups access to certain services.
CALLING-STATION-ID (Authentication only (Access-Request))	The Calling Party Number gives additional authentication support.
FRAMED-IP-ADDRESS (Accounting)	This is the IP address assigned to the partner after authentication and enables a simpler arrangement of accounting data.

Table 3-1: RADIUS server attributes

## 3.5 CAPI

### 3.5.1 XL2 as Fax Server on S2M Connections

Using Release 5.1.1 or greater, you can use the BRICK-XL2 with CM-PRI and FM-8MOD modules as a CAPI fax server on up to 30 B-channels (i.e. one CM-PRI and 4 FM-8MOD). Also be sure to use both BRICKware Release 5.1.1 for Windows NT and the modem image release 5.1.1 (csm\_511.csm). CAPI fax-server application manufacturers or fax-server system integrators are advised to take note of the hints in the Developer's Room of BinTec's Internet site.

When installing the FM-8MOD modems, be sure to separate data cables and power supply cables: it is important to prevent cable crossing.

### 3.5.2 CAPI Info Syslog Message

Applications that started 30 CAPI listener(s) and received an incoming call also received very many Syslog messages, creating a considerable load. For this reason, the classification of the Syslog message "setup ignored" has been changed from "info" to "debug".

## 3.6 Bridge

### 3.6.1 New SNMP Variables for Bridging

There are two new variables in the Bridging group.

- The first new variable is **dot1StpBridgePPPPForwardDelay** and is an addition to the **dot1dStp** table. The unit of the value of this variable is 1/100 sec-

onds, the range lies between 100 and 3000 and the default value is 500 (= 5 seconds).

This variable defines how long the port of a PPP connection (leased line or dial-up connection) should wait before a change of state may take place. After the establishment of an ISDN connection, the state takes this set period of time to change from *listening* to *learning*, then the same time again to change from *learning* to *forwarding*. **dot1StpBridgePPPPForwardDelay** only affects WAN connections like PPP and X.25.

When the default value (500) is set, it takes 5 seconds to change the state from *listening* to *learning* and another 5 seconds to change from *learning* to *forwarding*. After an ISDN connection has been made, it consequently takes 10 seconds until data is transmitted in the state *forwarding*.

This period of time is necessary to detect redundant paths.

- The second new variable is **dot1dStpPortBackupForIfIndex** and is an addition to the **dot1dStpPortTable**.

This variable is conceptualised for a situation in which two BRICKs are bridging two local networks over PPP connections. One of these is a leased line, the other a dialup line.

**dot1dStpPortBackupForIfIndex** is used to configure the dialup connection as a backup connection for the leased line connection.

In the **dot1dStpPortTable**, set the value of the **dot1StpPortBackupForIfIndex** variable for the interface of the dialup line with the same value as in the **dot1dStpPortIfIndex** of the leased line port. This effectively makes the port of the dialup line serve as the backup link for the leased line. As long as the leased line functions properly (its state is *forwarding*), the dialup link is not established. Should the leased line fail, however, the dialup link (backup) is established and the entries for the port of the leased line in the **dot1dTpFdbTable** are deleted.

## 3.7 System

### 3.7.1 No Autologout during Update

In the past, it may have been necessary to disable autologout for the course of an update or to reset it to a higher value if a rather low time interval was set.

Now, however, autologout can not interrupt the installation of an image even if the autologout time interval is less than the time it takes to update.

Regardless of the value for autologout prior to the update, once the update is complete, autologout is reset to its default value of 900 or 15 mins. If, however, you want to change back to the value set prior to the update, type `t` in the SNMP shell and your old value will be reset.

### 3.7.2 Trace Application Modification

The output of the trace application has been slightly improved. The facilities traced in the D-channel can now be directly compared to their respective ASN.1 specifications.

### 3.7.3 Setup Tool *SYSTEM* Menu

With the implementation of the new Windows Activity Monitor feature, the Setup Tool *SYSTEM* menu has changed. This new feature is a surveillance tool for Windows users to oversee the functions of a **BRICK**, and is described above in [Setup Tool, page 12](#).

The following changes have been made:

- The *SYSTEM* ➤ *EXTERNAL ACTIVITY MONITOR* submenu has been added.
- The password settings are made in the new submenu *SYSTEM* ➤ *PASSWORD SETTINGS*.



The **SYSTEM** menu now appears as shown in the example below.

BRICK Setup Tool	BinTec Communications AG
[System]: Change System Parameters	MyBinGO!
System Name	brick
Local PPP ID (default)	bricklocal
Location	Country
Contact	BinTec
Syslog output on serial console	no
Message level for the syslog table	info
Maximum Number of Syslog Entries	20
External Activity Monitor >	
External System Logging >	
Password Settings >	
SAVE	CANCEL
Enter string, max length = 34 chars	

## 4 Bug Fixes

### 4.1 Setup Tool

#### 4.1.1 Setup Tool Crash after SAVE in Extended Interface Settings

Running Release 4.9.5, if, in the Setup Tool menu **WAN PARTNER** ► **ADD**, no new WAN partner entry was made and one then went to the menu **ADVANCED SETTINGS** ► **EXTENDED INTERFACE SETTINGS** leaving via **SAVE**, Setup Tool crashed and if serially connected led to a stack trace.

This bug has been fixed.

#### 4.1.2 Setup Tool Crash in X.25 Call Monitor

Depending on the number of calls, Setup Tool crashed and the whole BRICK rebooted while monitoring connections in the Setup Tool menu page **Monitoring and Debugging** ► **X.25 Monitor**.

This bug has been fixed.

#### 4.1.3 CLID Configuration in Setup Tool Flawed

If two different numbers were configured for the one WAN partner with the **Directions both** and **outgoing** and if **LAPB Framing (only IP)** was selected under **Encapsulation**, the menu could not be exited via **SAVE**. Despite the fact that **Calling Line Identification** was set to **Yes**, the error message "**You must use Calling Line Identification (Direction both or incoming)**" was displayed.

This bug has been fixed.

## 4.2 X.25

### 4.2.1 X.25 Reset Response

The X.25 reset response for the BRICK-XM could have failed if the access had been established to an obsolete link.

This bug has been fixed.

### 4.2.2 X.25 Configuration with Setup Tool Faulty

(Not BGO)

If, in the Setup Tool menu **X.25** ▶ **ROUTING** ▶ **ADD**, the value *any* was selected from the field **Source Link**, the addition appeared incorrectly interpreted as *Refuse* in the menu **X.25** ▶ **ROUTING**.

This bug has been fixed.

### 4.2.3 File Transfer from X.21 to S2M

When incoming X.25 data packets were routed from an X.21 module to an S2M (PRI), some of the transmitted packets were too large, leading to a transmission failure.

This bug has been fixed.

### 4.2.4 TPO Bridge Restrictions

Up to now, the number of possible connections over the TPO bridge was restricted to 19.

Now this limitation has been lifted.

## 4.2.5 TPO Bridge Malfunction

If no TCP server existed, the X.25 calls were not disconnected immediately, but only after timeout.

This bug has been fixed.

## 4.2.6 X.25 Dialout Calls not Disconnected

It occurred in isolated cases that X.25 dialout calls were not disconnected although data exchange had not actually begun to take place. The B-channel was opened but, on receiving no Confirmation packets, continued to issue Restart requests. Thus, the connection remained open on Layer 2.

Now the connections are disconnected after two unconfirmed Restart packets have been sent.



### Caution!

It is also important to note that if **L2IdleTimer** is set to **-1** in the **X25LinkPresetTable**, or to **always active** in Setup Tool, the BRICK will continue to send endless RESTART\_REQ messages with the same effect of increased costs as above.

- Thus, if you want to prevent this, make sure to give the **L2IdleTimer** variable a value other than **-1** or to a setting other than **always active** in Setup Tool.

## 4.3 CAPI

### 4.3.1 BRICK XM & XL Fax Application

When sending / receiving simultaneously several faxes via the CM-2XBRI ISDN module, it could have occurred that the system rebooted.

This bug has been fixed.

### **4.3.2 CAPI via X.31 on D-Channel**

With an already existing CAPI connection via X.31 on the D-channel while other ISDN links were established and terminated, it could have occurred that CAPI messages which had to establish the B-channel connection were delivered to the X.31 application. This could have led to the termination of the links.

This bug has been fixed.

### **4.3.3 BRICK-XL Fax Application**

With a certain CAPI fax application the BRICK-XL booted during the disconnect procedure when faxing simultaneously via more than 18 channels. Consequently, the fax connections were disconnected, resulting in an error message at the remote station.

This bug has been fixed.

### **4.3.4 Connection Delays with CAPI or a TPO Bridge**

When there were particularly heavy loads of data traffic, transmission on the TCP connection may have been delayed by up to 15 seconds.

This bug has been fixed.

### **4.3.5 Data\_B3\_IND Data Handle Counted up to 2**

Since Release 4.9.3 a valid Data Handle has been assigned. This was, however, counted up to 2 instead of 1.

This bug has been fixed.

### **4.3.6 CAPI and Incorrect Bearer Capability**

Incoming CAPI calls, e.g. GSM calls, with incorrect bearer capability were not signalled to the CAPI application. When the bearer capability contained additional bytes to that contained in the CAPI specifications, no CIP value was recognised.

This bug has been fixed.

### **4.3.7 Connection Difficulties with CAPI 1.1 Applications**

In some cases, when using CAPI 1.1 applications with Releases 4.9.1 and 4.9.3, outgoing connections could not be properly established.

This bug has been fixed.

### **4.3.8 Transmission Failure after Protocol Switching**

There are a few fax and voice applications that use the Select\_B\_Protocol\_REQ message to switch between protocols for fax and voice. Data could not be transmitted after this kind of switching.

This bug has been fixed.

### **4.3.9 Faxing Problems with XL and FM8MOD**

Many fax connections failed with the BRICK XL and an FM8MOD before the fax data could be transmitted. The error message "remote machine is no fax machine" appeared.

This bug has been fixed.

## 4.4 ISDN

### 4.4.1 Problems with Autoconfiguration

The autoconfiguration of the ISDN switch type (**autodetect on bootup** in Setup Tool) failed to function properly with Release 4.9.5, and with PRI.

These bugs have been fixed.

### 4.4.2 Leased Line of Channel 31 Ineffective on Booting

When a leased line bundle, for example, was configured for channels 30 and 31, and the BRICK (XL) was started, only channel 30 was activated. Channel 31 was not activated, but set to dialup in the **isdnChTable**. If channel 31 was then manually set to **Leased Line DTE, different endpoints**, in Setup Tool, the bundle functioned properly. However, on every reboot of the BRICK, the channel was reset to **dialup** again.

This bug has been fixed.

### 4.4.3 Connected Address with 1TR6 Leading to Connection Failure

In very few applications, if the presentation indicator was set in the connected address and the 1TR6 Protocol was being used, the connection could not be made. The 1TR6 does not allow the forwarding of the presentation indicator in the connected address in the D-channel.

Now, however, the connected address is filtered out by the BRICK and the call can be made.

## 4.5 TAF

### 4.5.1 Routing with TAF

When routing with the Token Authentication Firewall (TAF) security option, the routing function of the **BRICK** could hang. This occurred mostly after about 120 TAF authentications.

This bug has been fixed.

### 4.5.2 Premature Expiry of TAF Authentication

It is possible to configure the variable **ipExtIfAuthKeepalive** so that keepalive packets can be sent on connections authenticated with TAF. In the event of each keepalive request or response being lost due to a high volume of traffic in the LAN, it became necessary for the user to reauthenticate.

Now, however, up to 3 keepalive requests can go unanswered without the necessity of reauthentication.

## 4.6 System

### 4.6.1 Multiple Simultaneous Logins Jam BRICK

When a lot of people logged in over isdnlogin, it occurred that after a period of time no further logins were possible, and that no further processes could be started on the BRICK.

This bug has been fixed.



## 4.6.2 Number of Columns in the SNMP Shell

When the number of columns (i.e. each vertical line of character entries) was set to a value which fell below the number of characters required by the longest string using the command `u`, the SNMP shell crashed.

This bug has been fixed.

## 4.7 PPP

### 4.7.1 Channel Bundling and Dynamic Short Hold Malfunction

The channels of a bundle were disconnected at the end of each charging unit and then immediately reconnected, provided the load was high enough. This malfunction did not result in increased costs as the charging units were exploited to the full; there may, however, have been a momentary collapse in bandwidth.

This bug has been fixed.

### 4.7.2 MS-Callback (CBCP) Working on the 2nd Attempt

The MS-Callback Control Protocol initialized from a Windows client to the **BRICK** was known not to work under a combination of the following conditions:

- on the first attempt after a reboot of the **BRICK**
- no entry in the **biboDialTable**, which implies the "User Defined Numbers" mode.

This bug has been fixed.

### 4.7.3 Charging Amounts Logged Incorrectly

If the variables **biboPPPTotalCharge** and **biboPPPConnCharge** were set correctly and no value was given to the **biboPPPLinkCharge**, incorrect charging amounts in the syslog message (INFO-Level) may have occurred. If the problem occurred, the amount logged was higher than the real value.

This bug has been fixed.

### 4.7.4 Link Quality Monitoring Set to "0"

Concerning leased lines, when the variable **biboPPPLQMonitoring** in the **biboPPPTable** was set to the invalid value '0' instead of "off (01)", certain SNMP managers experienced problems.

This bug has been fixed.

### 4.7.5 Problems Accessing Compuserve for the First Time

If the **BRICK** was newly configured, used as DHCP server on the LAN and you had configured Compuserve as your ISP combined with encapsulation x.75\_PPP or x.75\_BTXX\_PPP, it was not possible to use a browser to establish a connection with your provider for the very first time.

In such a case, the router could not find a DNS server, necessary for connections using a name-based browser. Only connections to partners with PPP encapsulation were made and not to partners with x.75\_PPP or x.75\_BTXX\_PPP, as in the case of, for example, Compuserve access.

This bug has been fixed.

## 4.7.6 Termination of VPN Connections

If the **BRICK** is used to create a connection over a VPN tunnel to a PPTP-PNS (PPTP Network Server) via a PPTP-PAC (PPTP Access Concentrator), the **BRICK** typically has to perform two PPP authentication negotiations:

- an initial PPP negotiation with the PPTP-PAC
- a final PPP negotiation with the PPTP-PNS

If both PPP negotiations are successfully performed, a VPN connection between **BRICK** and PPTP-PNS is established.

It could have occurred that the **BRICK** terminated the link to PPTP-PAC and therewith the VPN connection to the PPTP-PNS. The following actions were performed:

1. The **BRICK** started an initial PPP negotiation with the PPTP-PAC.
2. If negotiated so, the **BRICK** started PPP authentication (for example by using PAP) with the PPTP-PAC sending a PAP authentication request.
3. The PPTP-PAC ignored this PAP authentication request, but established a VPN tunnel to the PPTP-PNS.
4. A new PPP negotiation between **BRICK** and PPTP-PNS was performed, but the **BRICK** did not terminate the PPP authentication negotiation with the PPTP-PAC as required in RFC 1661. The **BRICK** still tried to carry out step 2.
5. The **BRICK** successfully authenticated on the PPTP-PNS.
6. The **BRICK** tried to authenticate on the PPTP-PAC ten times. These trials failed and so the **BRICK** terminated the link to the PPTP-PAC and therewith the VPN connection to the PPTP-PNS.

This bug has been fixed, now the **BRICK** acts as required in RFC 1661.

### 4.7.7 Tracing a VPN Connection

Tracing the establishment phase of a VPN (PPTP) connection in a WAN as well as in a LAN may have caused a panic, leading to the termination of the trace. In very isolated cases, the BRICK rebooted.

This bug has been fixed.

### 4.7.8 IPX Compression Protocol has not been Rejected

The **BRICK** does not support IPX Compression Protocol presently. But if a WAN partner offered the option "IPX Compression Protocol" when performing the IPXCP negotiation, the **BRICK** did not reject it with an IPXCP Configure Reject.

This bug has been fixed.

### 4.7.9 Link Quality Monitoring (LQM)

If Link Quality Monitoring (LQM) had been successfully negotiated, a Link Quality Report (LQR) could be sent after the Link Control Protocol (LCP) was terminated but the ISDN B channel was still established. In consequence, the **BRICK** sometimes received an LCP Protocol Reject on this LQR which resulted in a restart of the **BRICK**.

This bug has been fixed.

### 4.7.10 Microsoft Point-to-Point Compression (MPPC)

If Microsoft Point-to-Point Compression (MPPC) was configured and successfully negotiated (MPPC is supported by BinTec's FM-STAC module with Hardware Release 2.1), the transmission of data which is difficult to be compressed could lead to inconsistent states of both partner's compression histories. Espe-

cially using Multilink PPP connections, termination of seeming redundant B-channels could occur as a result of stagnant or cancelled data transmission. In rare cases this could result in the failure of the FM-STAC module or the restart of the **BRICK**.

Additionally configured Microsoft Point-to-Point Encryption (MPPE) increased the problem.

This bug has been fixed.

## 4.8 OSPF

### 4.8.1 Leased Line Bundle and OSPF

A reboot may have occurred if a leased line bundle was configured (e.g. 64S2) before or after enabling OSPF (**ospfAdminStat**).

This bug has been fixed.

## 4.9 RADIUS

### 4.9.1 Framed-IP Address = 255.255.255.254

Referring to RFC 2138, an IP address from an IP address pool on the RADIUS server should be dynamically assigned to a dial-in client when the attribute Framed-IP-Address is set to 255.255.255.254. Instead of this, up to now the IP address 255.255.255.254 has been assigned to those dial-in clients.

This bug has been fixed.

## 4.9.2 Authentication Caused Memory Leakage

Incoming PPP calls authenticated via RADIUS caused a memory leakage of approx. 100 bytes for every connection establishment. This could lead to a restart of the **BRICK** because of insufficient RAM available.

This bug has been fixed.

## 4.10 HTTP Status Page

### 4.10.1 Internet Explorer 4.0

Using a **BRICK**'s HTTP status page with Internet Explorer 4.0, it was not possible to access sites restricted by password. For example, if one tried to show the MIB tables by clicking the link system tables, there occurred not the usual log-on dialog but the error message "401Unauthorized".

The reason is that the **BRICK**'s HTTP server did support the HTTP protocol versions 0.9 and 1.0, but not the latest version 1.1. As the Internet Explorer 4.0 uses the version 1.1, the HTTP server realized that it is not its latest protocol version (1.0) and therefore used its old version (0.9), which doesn't support authentication processes.

This bug has been fixed.

If one uses Internet Explorer 4.0 and doesn't want to upgrade the **BRICK** to Release 5.1.1, the following workaround is possible:

- Go to **View** ➤ **Internet Options**.
- Click the **Advanced** tab.
- Deactivate the option **Use HTTP 1.1**, click **OK**.

## 4.10.2 More than Two FM-8MOD Modules Installed

The table "Hardware Interfaces" on the HTTP status page displays the status of the **BRICK**'s hardware interfaces. If function modules FM-8MOD are installed, every module with the number of modems available and used is shown. Only up to two FM-8MOD modules were displayed, even if more than two modules were installed.

This bug has been fixed.

## 4.11 IP

### 4.11.1 IP-Address via DHCP

It could have occurred that assigning IP-addresses via DHCP in your LAN failed, for example, with the HP JetDirect print server. The reason was an invalid string length of the "Hostname" tag, i.e. there was one byte too many.

This bug has been fixed.

## 4.12 Bridge

### 4.12.1 Compensation of Multiple Paths

There was a problem with the spanning tree algorithm. In consequence of this, some ports were falsely set to forwarding, data packets were multiplied, and a high volume of network traffic occurred. In rare cases, the **BRICK** rebooted.

This bug has been fixed.

## 5 Known Issues

### 5.1 FM-8MOD: No Module Detected

If two modem shuttles for FM-8MOD modules were installed in a BIANCA/BRICK-XL2, after starting or restarting, in rare cases, the **BRICK** can not detect the modems of one of the shuttles.

### 5.2 Outgoing FTP Connections via NAT

When outgoing FTP connections occur via NAT, data transfer does not work with some FTP servers. The connection is established, the FTP client can register with the server. Commands such as `cd` and `pwd` work, but others such as `dir` and `get` do not.

The problem can be dealt with if the client is switched to the passive mode. This is not, however, possible with all FTP clients.

### 5.3 Bridging and ISDN Leased Line Bundles

No Bridging takes place using leased lines with more than one B-channel (e.g. with the Setup Tool setting ***ISDN SWITCH TYPE: LEASED LINE B1+B2 CHANNEL (64S2)***).



## 5.4 BOD not Activated due to Load Error

When calculating the load of a channel bundle, no load (**pppExtIflLoad**) is calculated when **pppExtIflAlgorithm** is set to *proportional*. This means that BOD can not be activated when using this setting.

In order to ensure a load is calculated and BOD works correctly, make sure to leave **pppExtIflAlgorithm** set to the default value *equal*.

## 5.5 Secure VPN and the BRICK

The new Microsoft authentication procedure MSCHAP V2 included in Windows NT 4.0 Service Pack 4, the post-SP3 hotfix, and Windows 95 Dial-Up Networking 1.3 Upgrade is not yet supported by Bintec. This new protocol affects only VPN connections, not, however, dial-up lines. Thus, authentication on VPN connections using these upgrades or the hotfix may be affected. By making the following entries in the Windows Registry (if the entries do not already exist), VPN connections between Windows NT/95/98 servers and workstations can be ensured:

### Windows NT

When the value below is set to one, the client is forced to use MSCHAP V2 for all VPN connections. When the default value of zero is set, authentication of VPN connections can take place using MSCHAP (or CHAP or PAP).

► Ensure the default value is set.

HKEY\_LOCAL\_MACHINE\System\CurrentControlSet\Services\RasMan\PPP

DWORD: SecureVPN

Value: 0x00000001 == force MSCHAP V2 for VPN connections

Value: 0x00000000 == do not force secure MSCHAP V2 (default)

Service Pack 4 or post-SP3 hotfix also includes a historyless mode for encryption and compression over PPTP connections.

- If you want normal MPPE compression and encryption negotiation, set the value below to "Disabled".

HKEY\_LOCAL\_MACHINE\System\CurrentControlSet\Services\NdisWan\Parameters

DWORD: Historyless

Value: 0x00000001 == Enabled (default)

Value: 0x00000000 == Disabled

## Windows 95/98

For Windows 95/98 users, MSCHAP V2 could be upgraded with Windows 95 Dial-Up Networking 1.3 Upgrade. The same advice as above applies here, i.e. do not force secure mode.

HKEY\_LOCAL\_MACHINE\System\CurrentControlSet\Services\RemoteAccess

DWORD: SecureVPN

Value: 0x00000001 == Force secure mode (MSCHAP V2 plus data encryption) on all PPTP connections

Value: 0x00000000 == Do not force secure mode on PPTP connections (default)

For more information see:

<http://support.microsoft.com/support/kb/articles/q154/0/91.asp>

<http://support.microsoft.com/support/kb/articles/q189/5/94.asp>

<http://support.microsoft.com/support/kb/articles/q189/5/95.asp>