

Quick Install Guide

BinGO! Plus/Professional

BinGO! Plus and BinGO! Professional are full-featured Personal ISDN Internet Access Routers for single users and small-sized companies as well.

With the Configuration Wizard on the BinTec Companion CD, BinTec Communications offers you a quick and convenient way to start running your BinGO! Plus/Professional. You can perform basic configuration via serial connection with your Windows PC. This basic configuration includes all the important settings of the router, access to the Internet via an Internet Service Provider (ISP), as well as the connection to a WAN partner (e.g. to a corporate headquarters). The Configuration Wizard guides you step by step through the configuration and so detailed knowledge of networking technologies is not necessary. Graphic illustrations and a detailed online help system give you additional support.

The Configuration Wizard is one of several possibilities to configure your router. In this way, access to your router occurs via the serial interface. Additional methods of configuring your router are described in your User's Guide. With them you are able to fine-tune your configuration.

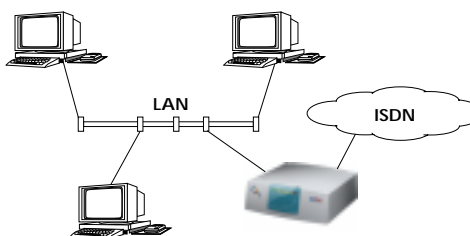
The following system requirements are necessary:

- Windows 95/98 or Windows NT 4.0
- Installed network card (ethernet)
- Installed Microsoft TCP/IP stack (see section 2 "Checking and Installing the TCP/IP Protocol")
- High color monitor (at least 32000 colors) for correct display of graphics

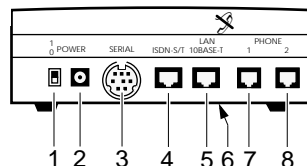
This Quick Install Guide takes you step by step through a basic configuration of your BinGO! Plus/Professional. Congratulations on your new purchase and have fun!

1 Connecting your Router

You can integrate your router in a local network (LAN):



All ports are located on the back plane of your product:



Connect the included cables in the following order:

Caution! Using an incorrect mains adaptor may damage your router! Therefore, only use the mains adaptor delivered with your BinGO! Plus/Professional! Don't mix up the mains adaptors of BinGO! Plus/Professional and BinGO! Plus/Professional!

Caution! Incorrect cabling of the ISDN and LAN interfaces could also damage your router! Don't interchange the LAN and ISDN interfaces!

- Set the LAN switch (6) to position:
 - || if you want to connect your router to the LAN hub (see above),
 - ⌵ if you don't want to connect your router to a LAN but directly to the ethernet card of your PC (single user system).
- Connect the included laplink cable to your computer (COM1 or COM2) and the serial port (3) of your router.
- Connect the 10BaseT port (5) of your router to your ethernet or to the network card of your PC (single user system). Use one of the included ISDN (RJ-45) cables.
- Connect your analog equipment to phone ports (7) und (8).
- Connect the other ISDN (RJ-45) cable to the S₀ port (4) of your router and your ISDN outlet.

Connect the included power adaptor to your router (2) and your mains socket. Turn your router on using the power switch (1).

2 Preparing Configuration

Router Settings

Before you start to configure your router, make sure you know the following information about your ISDN connection and your network environment. Write down your values in the table below to make sure you find the necessary information while you are performing the configuration, examples are shown.

- ISDN number: the numbers of your ISDN connection.
- If you have an existing network, ask your system administrator for the IP address and netmask of your router. If you are installing a new network, simply use the example values given.

Access Data	Example	Your Value
ISDN numbers	10, 11, 12	
Router's IP address	192.168.1.254	
Router's netmask	255.255.255.0	

Internet Access

For access to the Internet via your Internet Service Provider (ISP), e.g. T-Online, you will need several pieces of information which should be provided by your ISP (different ISPs may use different terminology).

Account Info	Example	Your Value
Provider name	Golnternet	
Phone number (ISP)	1234567	
User account	MyName	
Password	TopSecret	

Some ISPs, for example T-Online, need additional information, such as the T-Online number and joint user account.

Corporate Network Connection (LAN-LAN Connection)

For the connection to a corporate network or another WAN partner, you must have the following information about the opposite terminal.

Access Data	Example	Your Value
WAN partner name	BigBoss	
Phone number	0911987654321	
Local name	LittleIndian	
Password	Secret	
Partner's network address(es)	10.1.1.0	
Partner's netmask(s)	255.255.255.0	

Agree upon the data with your partner: you will both use a common password; your entry "local name" and your partner's entry "partner name" must be identical; your entry "partner name" and your partner's entry "local name" must also be identical.

Checking and Installing the TCP/IP Protocol

The TCP/IP protocol is the "language" PCs use to communicate over the network and to connect to the Internet. Make sure that the TCP/IP protocol is installed before you start configuring your router. To check the installation of the TCP/IP protocol or to install the TCP/IP protocol:

- In the start menu click **Settings ▶ Control Panel**. Double-click **Network**.
- Windows 95/98: search in the network components list for **TCP/IP**.
- Windows NT: select the tab **Protocols**. Search in the network protocols list for **TCP/IP protocol**.
- If you can't find this entry, install the TCP/IP protocol as described below. Otherwise, close the dialog box and start configuration (section 3).

To install the TCP/IP Protocol:

- Windows 95/98: in the dialog box **Network** click **Add**. In the network components list select **protocol** and click **Add**. As manufacturer select **Microsoft** and as network protocol select **TCP/IP**. Click **OK**. In an existing network, you might have to configure additional settings here. Ask your network administrator. If you are setting up a new network, click **OK**. Your PC is now set up as a DHCP client.
- Windows NT: in the **Network** dialog box, click the tab **Protocols** and click **Add**. In the network components list, click **TCP/IP protocol** and click **OK**. Click **Yes** to set up a new network (PC as DHCP client). In an existing network, ask your network administrator.
- Follow the instructions on the screen and finally restart your PC. Repeat the installation on all PCs with which you need to access the Internet.

3

Installing BRICKware

Quit all Windows-based programs on your PC.

- Put the BinTec Companion CD in the CD-ROM drive of your PC. After a few seconds the start window appears. If the start window does not appear automatically, click in your Windows Explorer your CD-ROM drive and double-click **setup.exe**.
- Click **BRICKware** to start the setup program.
- Enter the directory BRICKware shall be installed to.
- Select your router, thus BinGO! Plus or BinGO! Professional.
- Select the software components you want to have installed. You can accept the adjusted values.

DIME Tools contains mainly tools for configuration, maintenance and diagnosis. For the basic functions of your router, it is not necessary to start DIME Tools automatically with Windows.

The Configuration Wizard starts at the end of the installation.

4

Configuring your Router

The configuration of your router is quick and easy with the Configuration Wizard. Please note: if you have already configured your router with the Configuration Wizard, the Wizard may assume the preset values. At the end, the configuration is transferred to the router and saved on the PC.

You can carry out the configuration in either quick or expert mode. If you are unfamiliar with networking technologies, choose quick mode.

You can select from the following configuration areas: basic router settings, Internet access and corporate network connection (LAN-LAN connection). The basic router settings are essential. They integrate the router in your local network and enable the use of communications applications (CAPI).

- Select the desired subjects and follow the instructions on the screen.
- If you have set up a new network and installed the TCP/IP protocol on the PC, as described above, configure your router as a DHCP server (default).

In this case, the PC has to be assigned an IP address at the end of configuration. This happens automatically under Windows NT. Under Windows 95 or 98, the Configuration Wizard starts the program WINIPCFG:

- Click **Yes** to start WINIPCFG. Click **Renew All** and then click **OK**.

5

Configuring your PC

If you have chosen communications applications (TAPI/CAPI) during configuration, you will be asked to perform CAPI and TAPI configuration now. Among other things, CAPI allows you to send and receive fax messages and to use an answering machine. TAPI enables computer-supported telephoning.

- Click **Yes** to start configuration. In the **Remote TAPI** tab enter the IP address of your router if it isn't entered already. Also enter the user name and password for users of telematic services, as entered previously in the Configuration Wizard. Click **Use these values**. Repeat these steps for the Remote **CAPI** tab. Click **OK**.

To be able to use fax services on your PC, you have to install a CAPI application like RVS-Com Lite. RVS-Com Lite is included on your BinTec Companion CD.

- Click **RVS-Com Lite** in the start window to install RVS-Com Lite (see subject 3 "Installing BRICKware") and follow the instructions on the screen. An online help system is also available.

You may allow access to the Internet via your router for all PCs located in the same network as your router. In order to do this, you must enter the router as a gateway and as a DNS server for all those PCs that were not configured as DHCP clients, as described below:

- In the start menu click **Settings ▶ Control Panel**. Double-click **Network**.
- Click **TCP/IP** in the network components list (for Windows NT it is on the **Protocol** tab) and click **Properties**.
- Click the **Gateway** tab and enter the IP address of your router as **New Gateway**. (Windows NT: click the **IP Address** tab and enter the IP address of your router as **Standard Gateway**). Click **Add**.
- Click the **DNS Configuration** tab and enter the IP address of your router under **DNS Server Search Order**. Click **Add** and then **OK**. Follow the further instructions on the screen.

6

Testing Configuration

You have successfully finished the configuration of your router!

- Remove the cable from the serial port of your router now.

⚠ Caution! Incorrect configuration of the devices in your network may result in unintended connections and increased charges. Monitor your router and make sure that the system does not establish unwanted ISDN connections (and charges). Observe the LED display of your router (LED **L1** or **L2** is on: connection established) or use the monitoring function in the Setup Tool (see Getting Started and User's Guide).

- Test the connection to your router. In the start menu click **Run**. Enter **ping**, followed by a space, followed by the IP address of your router. A window appears with the response "**Reply from...**".
- Now open your Internet Browser and enter www.bintec.de to test the access to the Internet. At BinTec's WWW site you will find the latest news, updates, and documentation.

