

Quick Install Guide

BinGO! Plus/Professional

BinGO! Plus and BinGO! Professional are full-featured Personal ISDN Internet Access Routers for single users and small-sized companies as well.

With the Configuration Wizard on the BinTec Companion CD BinTec Communications offers you a great opportunity to start running your BinGO! Plus/Professional in an easy and quick way. You can perform a basic configuration via serial connection with your Windows PC. This basic configuration includes all important settings of the router and access to the Internet via an Internet Service Provider (ISP). The Configuration Wizard guides you step by step through the configuration and so thorough knowledge of networking technologies is not necessary. Graphic illustrations and a detailed online help system give you additional support.

The Configuration Wizard is one of several possibilities to configure your router. Thereby the access to your router occurs via the serial interface. Additional methods of configuring your router are described in your User's Guide. With them you are able to fine tune your configuration.

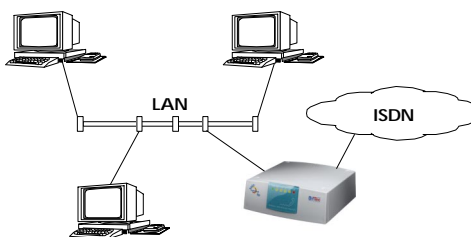
The following system requirements are necessary:

- Windows 95 resp. 98 or Windows NT 4.0 and up
- Installed network card (ethernet)
- Installed Microsoft TCP/IP stack (see section 2 "Checking and Installing the TCP/IP Protocol")
- High color monitor (at least 32000 colours) for correct display of graphics

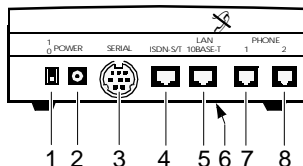
This Quick Install Guide takes you through, step by step, a basic configuration of your BinGO! Plus/Professional. Congratulations on your new purchase and good luck!

1 Connecting your Router

You can integrate your router in a local network (LAN):



All ports are located on the back plane of your product:



Connect the included cables in the following order:

- ⚠ Caution!** Using an incorrect power supply may damage your router! Therefore only use the power supply delivered with your BinGO! Plus/Professional! Don't mix up the power supplies of BinGo! and BinGO! Plus/Professional!
- ⚠ Caution!** A wrong cabling of the ISDN and LAN interfaces could also damage your router! Don't interchange the LAN and ISDN interfaces!
- Set the LAN switch (6) to position:
 - || if you want to connect your router to the LAN hub (see above),
 - ⌘ if you don't want to connect your router to a LAN but directly to the ethernet card of your PC (single user system).
- Connect the included laplink cable to your computer (COM1 or COM2) and the serial port (3) of your router.
- Connect the 10BaseT port (5) of your router to your ethernet or to the network card of your PC (single user system). Use one of the included ISDN (RJ-45) cables.
- Connect your analog equipment to phone ports (7) und (8).
- Connect the other ISDN (RJ-45) cable to the S₀ port (4) of your router and your ISDN outlet.
- Connect the included power supply to your router (2) and your mains socket. Turn your router on using the power switch (1).

2 Preparing Configuration

Internet Access

For access to the Internet via your Internet Service Provider (ISP), e.g. T-Online, you will need several pieces of information which should be provided by your ISP (different ISPs use different terminology). Write down your values in the table below to make sure you find the needed information while you perform the configuration, examples are shown.

Account Info	Example (T-Online)	Your Value
Provider Name	T_ONLINE	
Phone Number (ISP)	0191011	
User Account	123456789012	
Password	TopSecret	

Some ISPs, for example T-Online, need additional information:

Account Info	Example (T-Online)	Your Value
T-Online-Nummer	091196730	
Mitbenutzerkennung	0001	

Router Settings

Before you start to configure your router make sure you know the following information about your ISDN connection and your network environment:

- ISDN number: the numbers of your ISDN connection.
- If you have an existing network: IP address and netmask of your router. Ask your network administrator! If you install a new network the Configuration Wizard suggests convenient values for IP address and netmask.

ISDN Numbers	
BinGO! Plus/Professional IP Address	. . .
BinGO! Plus/Professional Netmask	. . .

3 Checking and Installing the TCP/IP Protocol

The TCP/IP protocol is the "language" PCs use to communicate over the network and to connect to the Internet. Make sure that the TCP/IP protocol is installed before you start configuring your router. To check the installation of the TCP/IP protocol or to install the TCP/IP protocol:

- In the start menu click **Settings**, in the submenu click **Control Panel**. Double-click **Network**.
- Windows 95/98: Search in the network components list for **TCP/IP**.
- Windows NT: click the tab **Protocols**. Search in the network protocols list for **TCP/IP protocol**.
- If you can't find this entry install the TCP/IP protocol as described below. Otherwise close the dialog box and start configuration (section 3).

To install the TCP/IP Protocol:

- Windows 95/98: In the dialog box **Network** click **Add**. In the network components list select **protocol** and click **Add**. In the manufacturers column click **Microsoft** and then click **Microsoft TCP/IP**. Click **OK**. In an existing network you might have to configure additional settings. Ask your network administrator. If you are setting up a new network click **OK**.
- Windows NT: In the **Network** dialog box, click the tab **Protocols** and click **Add**. In the network components list click **TCP/IP protocol** and click **OK**. Confirm the question with **Yes** to set up a new network. In an existing network ask your network administrator.
- Follow the instructions on the screen and finally restart your PC. Repeat the installation on all PCs you need access to the Internet.

3 Installing BRICKware

- Quit all Windows-based programs on your PC.
- Put the BinTec Companion CD in the CD-ROM drive of your PC. After a few seconds the start window appears. If the start window does not appear automatically, click in your Windows Explorer your CD-ROM drive and double-click **setup.exe**.
- Click **BRICKware** to start the setup program.
- Enter the directory BRICKware shall be installed to.
- Select your router, thus BinGO! Plus or BinGO! Professional.
- Select the software components you want to have installed. You can accept the adjusted values.
- DIME Tools contains mainly tools for configuration, maintenance and diagnosis. For the basic functions of your router it is not necessary to start DIME Tools automatically with Windows.
- The Configuration Wizard starts.

4 Configuring your Router

With the Configuration Wizard you configure your router in a quick and easy way. Please note:

When you configure your router with the Configuration Wizard your router will be initially reset. Existing configurations – not made by the Configuration Wizard – will be lost. So if your router is already configured transmit the existing configuration to your PC before starting (see User's Guide).

You can carry out the configuration in either quick or expert mode. If you are unfamiliar in networking technologies choose quick mode.

You can select the following configuration steps: Basic Router Settings and Internet Access. The Basic Router Settings are required to integrate the router in your network and to enable telematic services. Additionally, you may configure Internet access on your router to allow all PCs on your LAN to access the Internet via your BinGO! Plus/Professional.

- Select the desired subjects and follow the instructions on the screen.
- If you have set up a new network and installed the TCP/IP protocol as described above you have to configure your router as DHCP server (default).

In this case the PC has to be assigned an IP address at the end of configuration. Under Windows NT this will be done automatically. Under Windows 95 or 98 the Configuration Wizard starts the program WINIPCFG:

- Click **Yes** to start WINIPCFG. Click **Renew All** and then click **OK**.

5 Configuring your PC

If you have chosen telematic services (TAPI/CAPI) during configuration, you will be asked to perform CAPI and TAPI configuration now. CAPI enables, among other things, sending and receiving of fax messages and an answering machine's functionality. TAPI enables computer supported telephoning.

- Click **Yes** to start configuration. In the **Remote TAPI** tab enter the IP address of your router if it isn't entered already. Also enter user name and password for users of telematic services as entered previously before in the Configuration Wizard. Click **Use these values**. Repeat these steps for the Remote **CAPI** tab. Click **OK**.

To be able to use fax services on your PC you have to install a CAPI application like RVS-Com Lite. RVS-Com Lite is included on your BinTec Companion CD.

- Click **RVS-Com Lite** in the start window to install RVS-Com Lite (see subject 3 "Installing BRICKware") and follow the instructions on the screen. An online help system is also available.

You may allow access to Internet via your router for all PCs located in the same network as your router. For that on the PCs which are not adjusted as DHCP client you have to enter your router as gateway and as DNS server as described below:

- In the start menu click **Settings**, in the submenu click **Control Panel**. Double-click **Network**.
- Click **TCP/IP** in the network components list (for Windows NT it is on the **Protocol** tab) and click **Properties**.
- Click the **Gateway** tab and enter the IP address of your router as New Gateway. (Windows NT: Click the **IP Address** tab and enter the IP address of your router as **Standard Gateway**). Click **Add**.
- Click the **DNS Configuration** tab and enter the IP address of your router under **DNS Server Search Order**. Click **Add** and then **OK**. Follow the further instructions on the screen.

6 Testing Configuration

You have successfully finished the configuration of your router!

- Remove the cable from the serial port of your router (3) now.
- ▲ **Caution!** An incorrect configuration of the devices in your network may result in unintended connections and increased charges. Monitor your router and make sure that the system does not establish unwanted ISDN connections (and charges). Observe the LED display of your router (LED **L1** or **L2** is on: Connection established) or use the monitoring function in the Setup Tool (see Getting Started and User's Guide).
- Test the connection to your router. In the start menu click **Run**. Enter **ping** followed by a space followed by the IP address of your router. A window appears with the response "**Reply from...**".
- Now open your Internet Browser and enter www.bintec.de to test the access to the Internet. At BinTec's WWW site you will find the latest news, updates, and documentation.

